

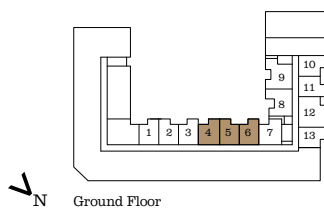
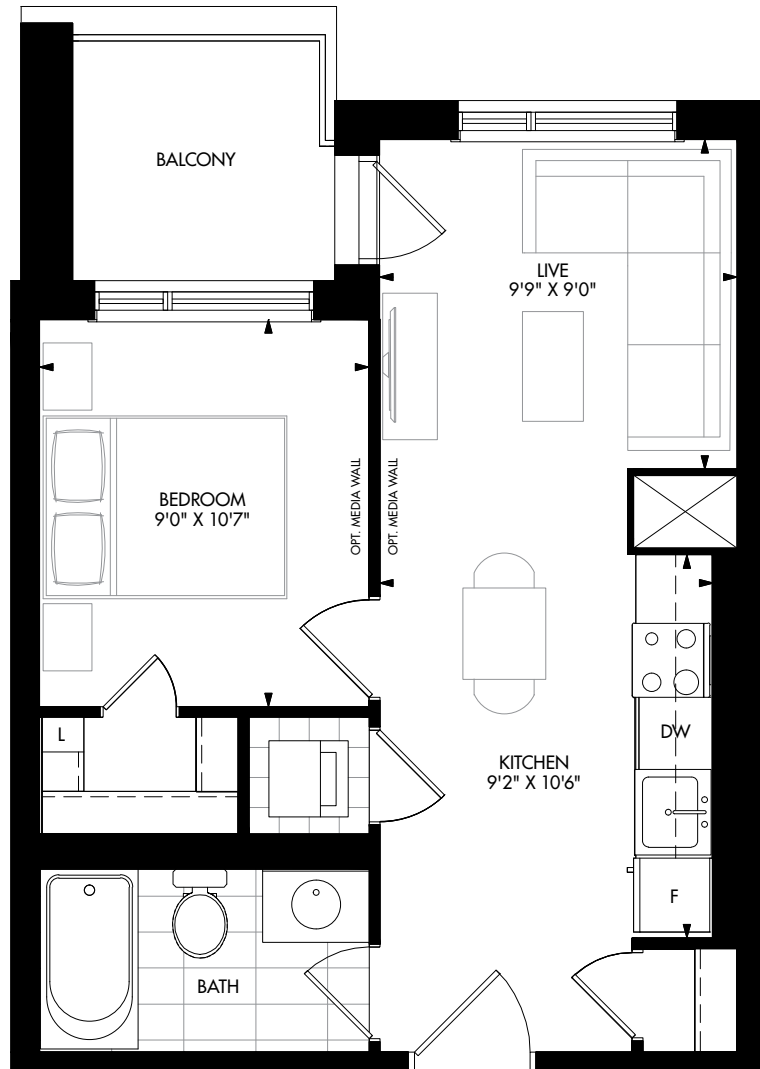
# CH1D | C01D



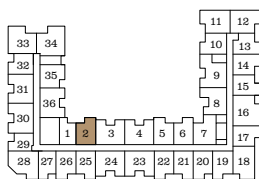
CARDING  
HOUSE

## One Bedroom

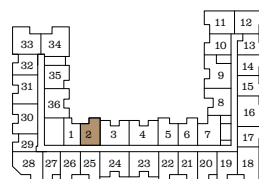
Interior: 483 s.f. | Exterior: 39 s.f. | Total: 522 s.f.



Ground Floor



2nd-3rd Floor



4th-5th Floor

All illustrations are artist's concept. All dimensions are approximate. Prices, specifications, terms and conditions subject to change without notice. Pricing, Incentives, availability, and plans are subject to change without notice. Features are as per plan and as per Schedule A are subject to change without notice. Images are for marketing purposes only and may not reflect included/available features. Note: Actual usable floor space may vary from the stated floor area. E.&O.E.

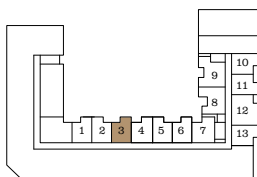
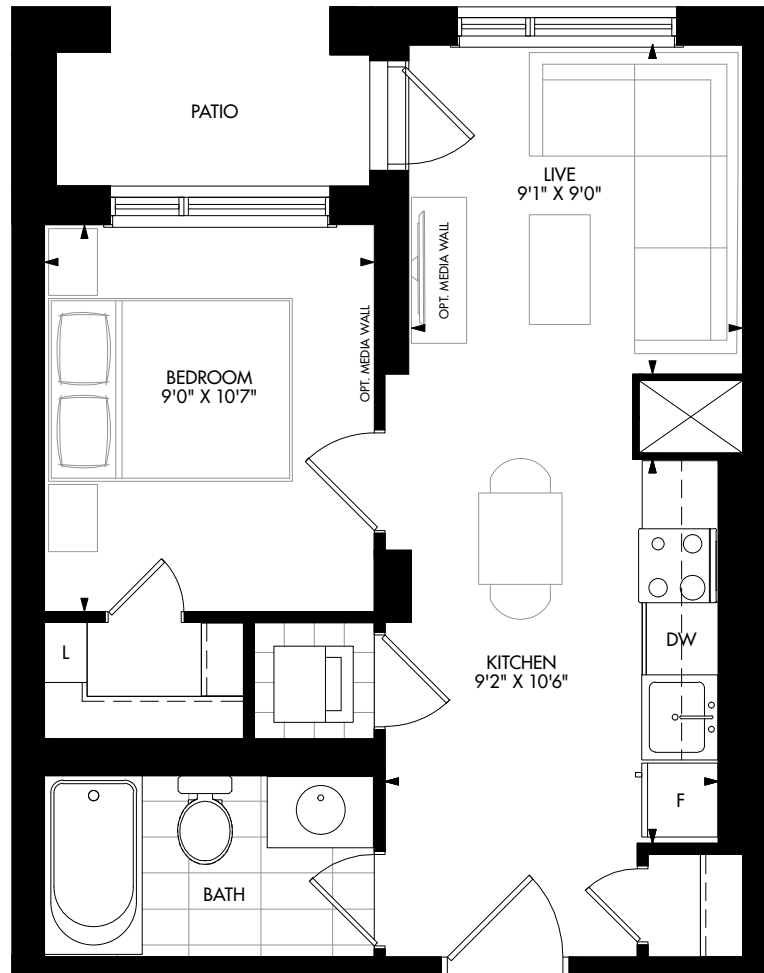
# C01E



CARDING  
HOUSE

## One Bedroom

Interior: 494 s.f. | Exterior: 39 s.f. | Total: 533 s.f.



N  
Ground Floor

All illustrations are artist's concept. All dimensions are approximate. Prices, specifications, terms and conditions subject to change without notice. Pricing, Incentives, availability, and plans are subject to change without notice. Features are as per plan and as per Schedule A are subject to change without notice. Images are for marketing purposes only and may not reflect included/available features. Note: Actual usable floor space may vary from the stated floor area. E.&O.E.

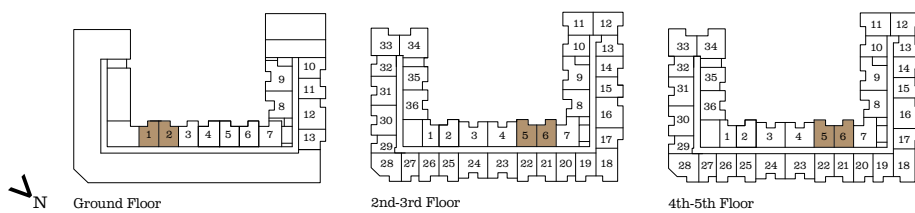
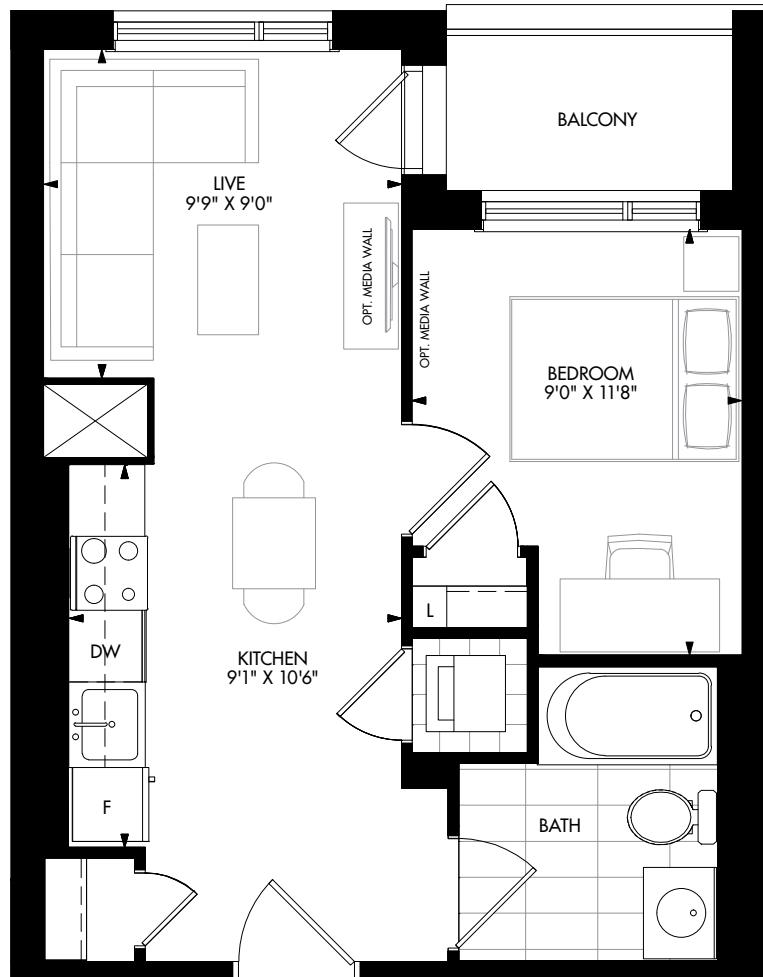
# CH1C | C01C



CARDING  
HOUSE

## One Bedroom

Interior: 483 s.f. | Exterior: 38 s.f. | Total: 521 s.f.



All illustrations are artist's concept. All dimensions are approximate. Prices, specifications, terms and conditions subject to change without notice. Pricing, Incentives, availability, and plans are subject to change without notice. Features are as per plan and as per Schedule A are subject to change without notice. Images are for marketing purposes only and may not reflect included/available features. Note: Actual usable floor space may vary from the stated floor area. E.&O.E.

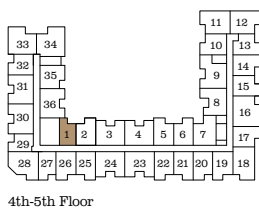
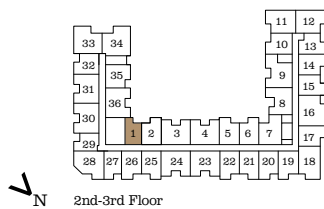
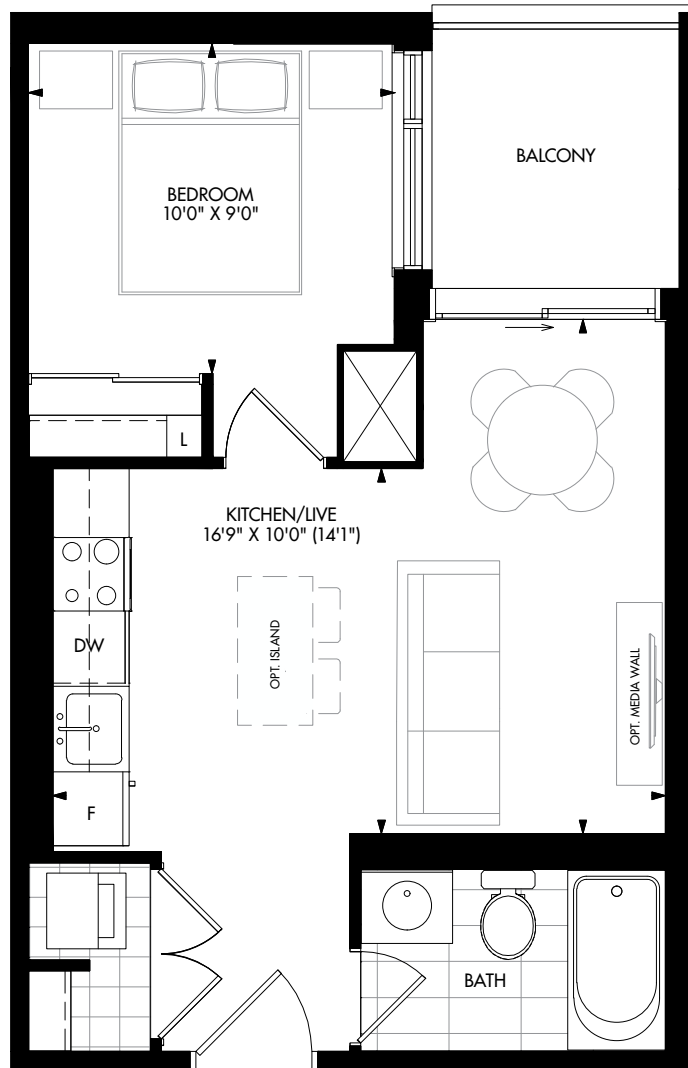
# CH1B



CARDING  
HOUSE

## One Bedroom

Interior: 477 s.f. | Exterior: 46 s.f. | Total: 523 s.f.



All illustrations are artist's concept. All dimensions are approximate. Prices, specifications, terms and conditions subject to change without notice. Pricing, Incentives, availability, and plans are subject to change without notice. Features are as per plan and as per Schedule A are subject to change without notice. Images are for marketing purposes only and may not reflect included/available features. Note: Actual usable floor space may vary from the stated floor area. E.&O.E.

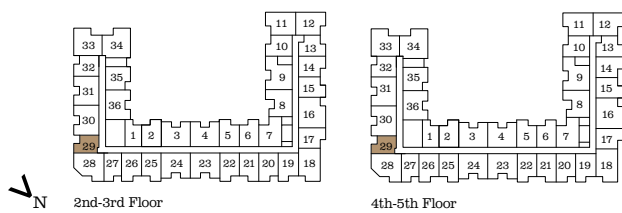
# CH1A | C01A



CARDING  
HOUSE

## One Bedroom

Interior: 475 s.f. | Exterior: 41 s.f. | Total: 516 s.f.



All illustrations are artist's concept. All dimensions are approximate. Prices, specifications, terms and conditions subject to change without notice. Pricing, Incentives, availability, and plans are subject to change without notice. Features are as per plan and as per Schedule A are subject to change without notice. Images are for marketing purposes only and may not reflect included/available features. Note: Actual usable floor space may vary from the stated floor area. E.&O.E.

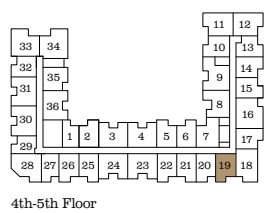
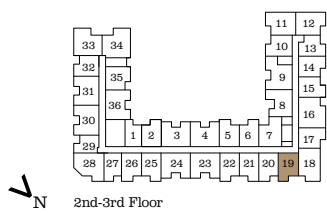
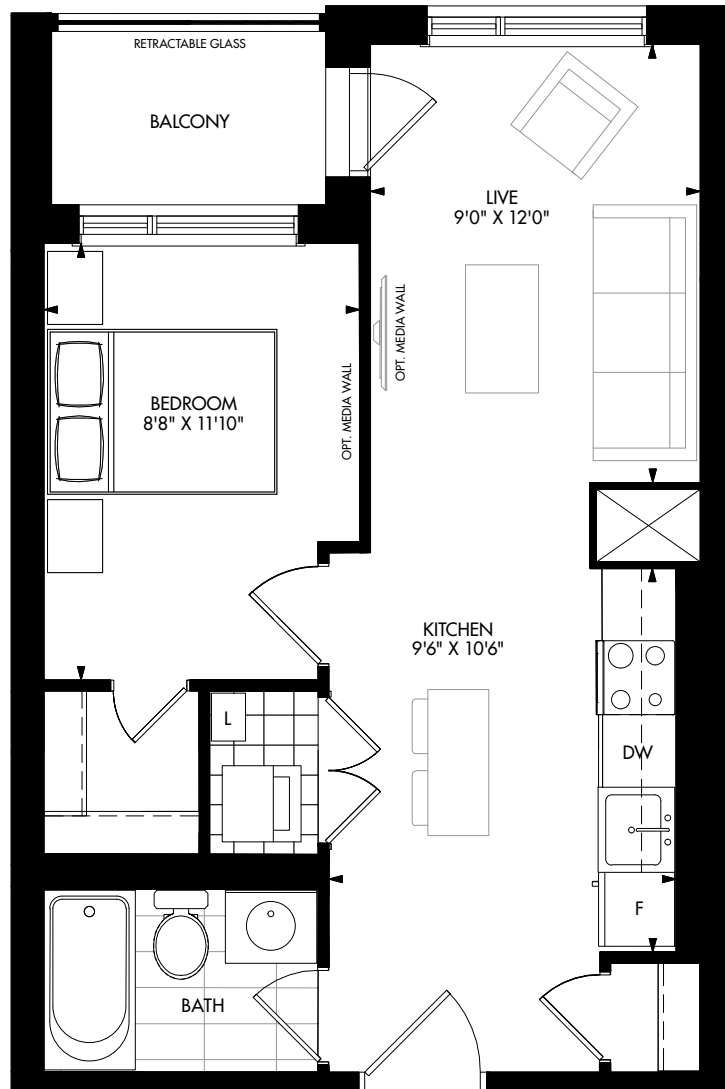
# CH1F | C01F



CARDING HOUSE

## One Bedroom

Interior: 516 s.f. | Exterior: 40 s.f. | Total: 556 s.f.



All illustrations are artist's concept. All dimensions are approximate. Prices, specifications, terms and conditions subject to change without notice. Pricing, Incentives, availability, and plans are subject to change without notice. Features are as per plan and as per Schedule A are subject to change without notice. Images are for marketing purposes only and may not reflect included/available features. Note: Actual usable floor space may vary from the stated floor area. E.&O.E.

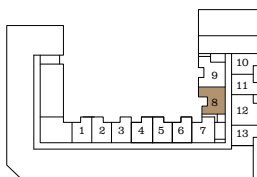
# C01G



CARDING  
HOUSE

## One Bedroom

Interior: 603 s.f. | Exterior: 41 s.f. | Total: 644 s.f.



N  
Ground Floor

All illustrations are artist's concept. All dimensions are approximate. Prices, specifications, terms and conditions subject to change without notice. Pricing, Incentives, availability, and plans are subject to change without notice. Features are as per plan and as per Schedule A are subject to change without notice. Images are for marketing purposes only and may not reflect included/available features. Note: Actual usable floor space may vary from the stated floor area. E.&O.E.

# CH1K | C01K

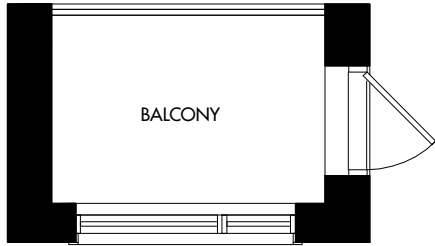


**CARDING  
HOUSE**

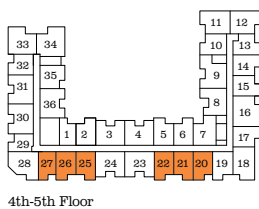
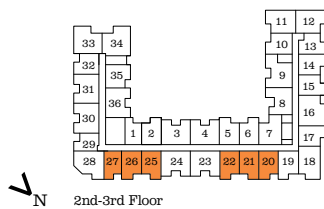
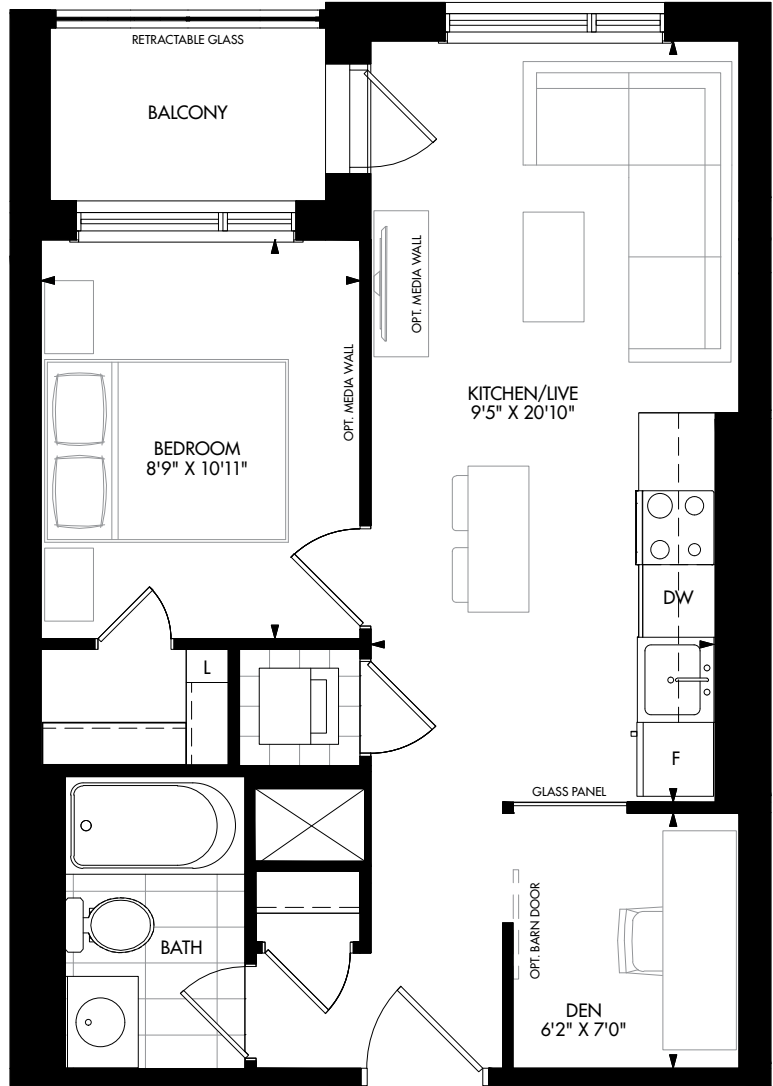
## One Bedroom + Den

Interior: 543 s.f. | Exterior: 40 s.f. | Total: 583 s.f.

SUITES  
220/227/320/327/420/427/520/527



SUITES WITH RETRACTABLE GLASS BALCONY:  
221/222/225/226/321/322/325/326/421/422/425/426/521/522/525/526



All illustrations are artist's concept. All dimensions are approximate. Prices, specifications, terms and conditions subject to change without notice. Pricing, Incentives, availability, and plans are subject to change without notice. Features are as per plan and as per Schedule A are subject to change without notice. Images are for marketing purposes only and may not reflect included/available features. Note: Actual usable floor space may vary from the stated floor area. E.&O.E.



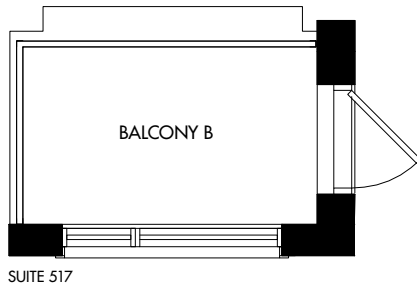
# CH1M | C01M



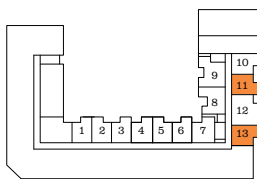
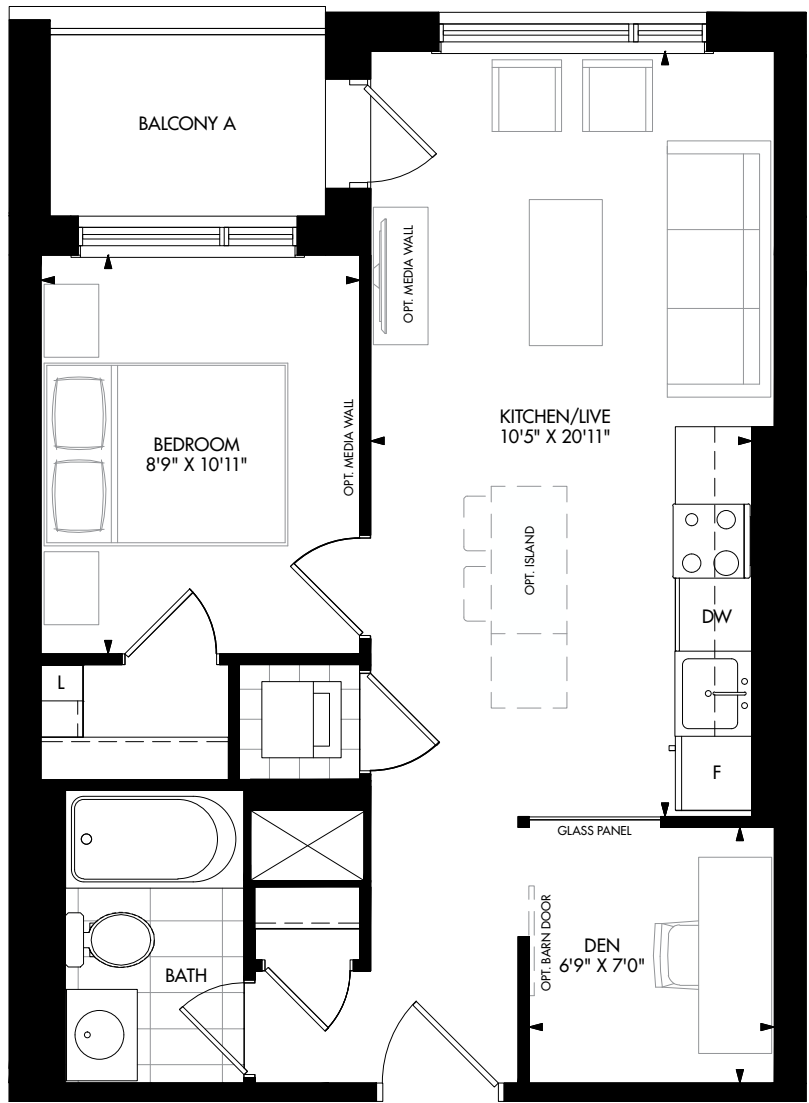
CARDING HOUSE

## One Bedroom + Den

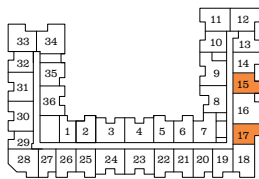
Interior: 574 s.f. | Exterior: 42 s.f. | Total: 616 s.f.



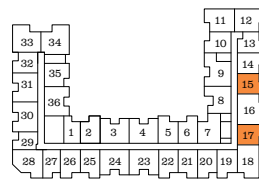
SUITE 517



Ground Floor



2nd-3rd Floor



4th-5th Floor

All illustrations are artist's concept. All dimensions are approximate. Prices, specifications, terms and conditions subject to change without notice. Pricing, Incentives, availability, and plans are subject to change without notice. Features are as per plan and as per Schedule A are subject to change without notice. Images are for marketing purposes only and may not reflect included/available features. Note: Actual usable floor space may vary from the stated floor area. E.&O.E.

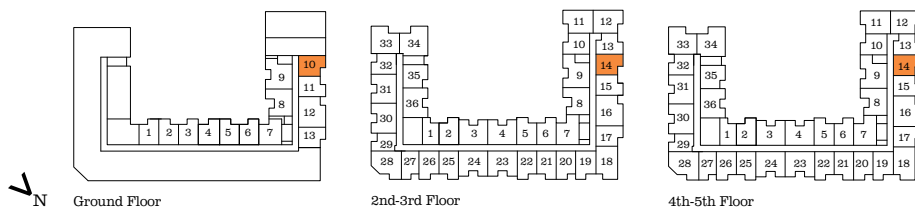
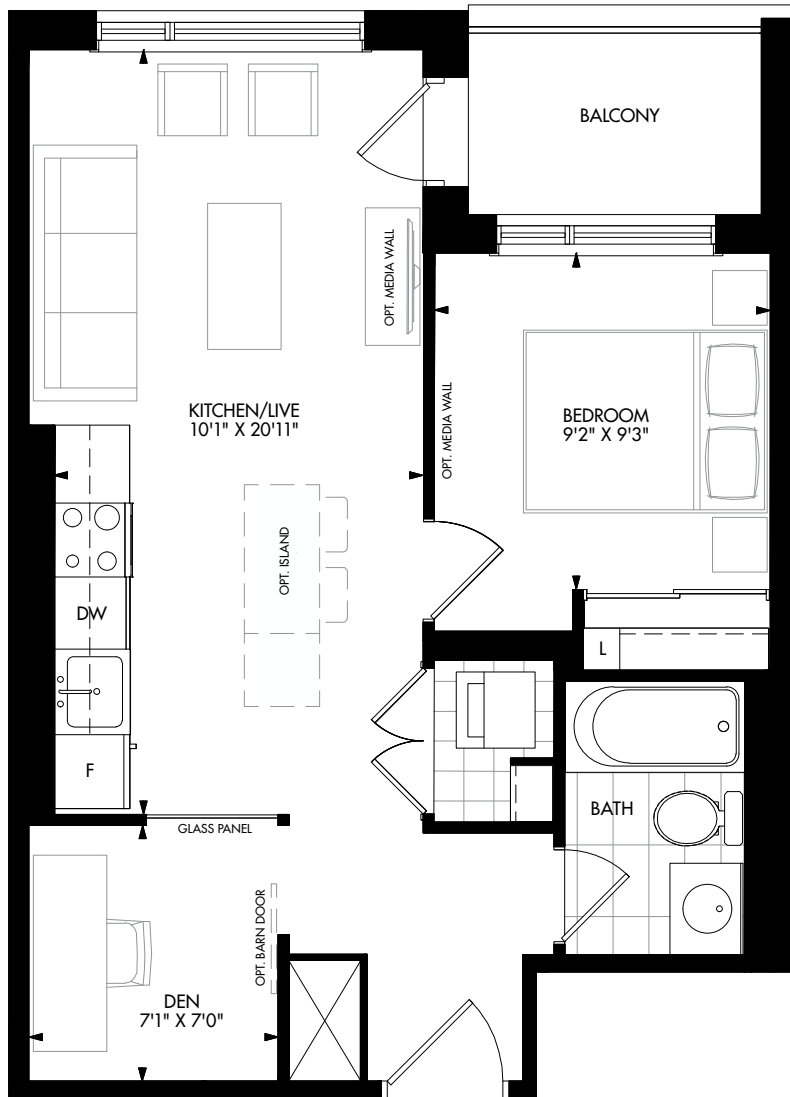
# CH1L | C01L



CARDING  
HOUSE

## One Bedroom + Den

Interior: 554 s.f. | Exterior: 43 s.f. | Total: 597 s.f.



All illustrations are artist's concept. All dimensions are approximate. Prices, specifications, terms and conditions subject to change without notice. Pricing, Incentives, availability, and plans are subject to change without notice. Features are as per plan and as per Schedule A are subject to change without notice. Images are for marketing purposes only and may not reflect included/available features. Note: Actual usable floor space may vary from the stated floor area. E.&O.E.

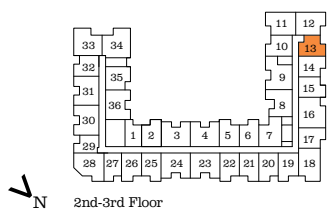
# CH1J | C01J



CARDING HOUSE

## One Bedroom + Den

Interior: 531 s.f. | Exterior: 39 s.f. | Total: 570 s.f.



All illustrations are artist's concept. All dimensions are approximate. Prices, specifications, terms and conditions subject to change without notice. Pricing, Incentives, availability, and plans are subject to change without notice. Features are as per plan and as per Schedule A are subject to change without notice. Images are for marketing purposes only and may not reflect included/available features. Note: Actual usable floor space may vary from the stated floor area. E.&O.E.

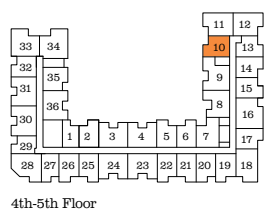
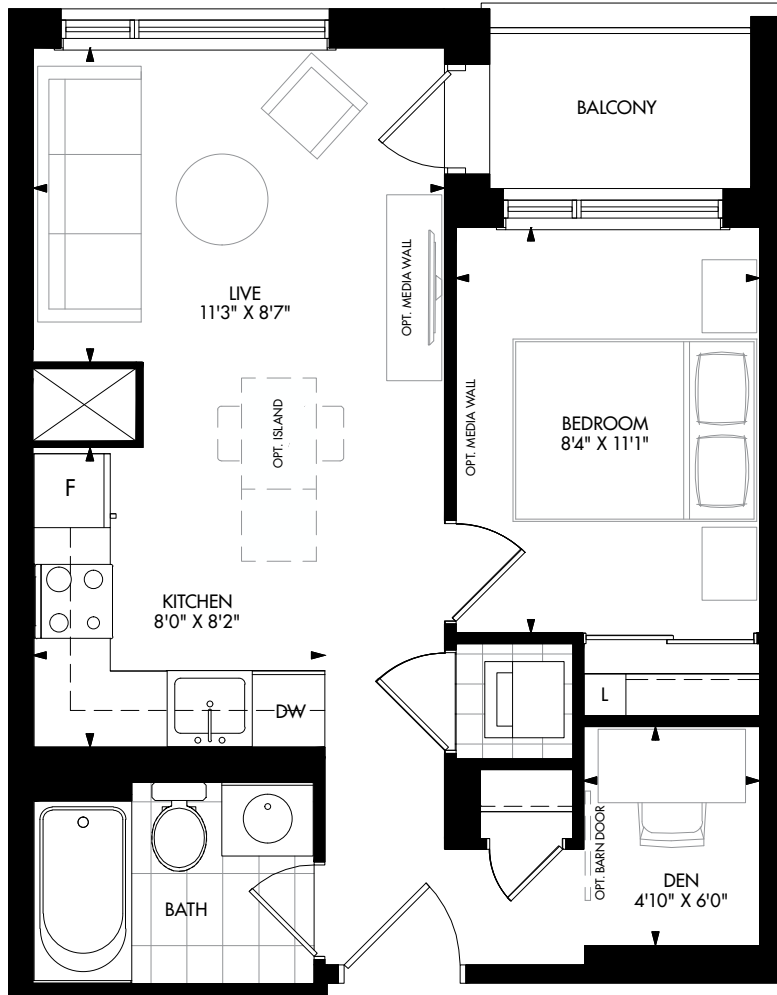
# CH1I | C01I



**CARDING  
HOUSE**

## One Bedroom + Den

Interior: 518 s.f. | Exterior: 35 s.f. | Total: 553 s.f.



All illustrations are artist's concept. All dimensions are approximate. Prices, specifications, terms and conditions subject to change without notice. Pricing, Incentives, availability, and plans are subject to change without notice. Features are as per plan and as per Schedule A are subject to change without notice. Images are for marketing purposes only and may not reflect included/available features. Note: Actual usable floor space may vary from the stated floor area. E.&O.E.

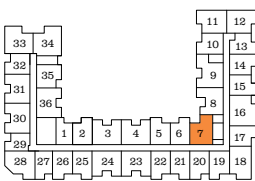
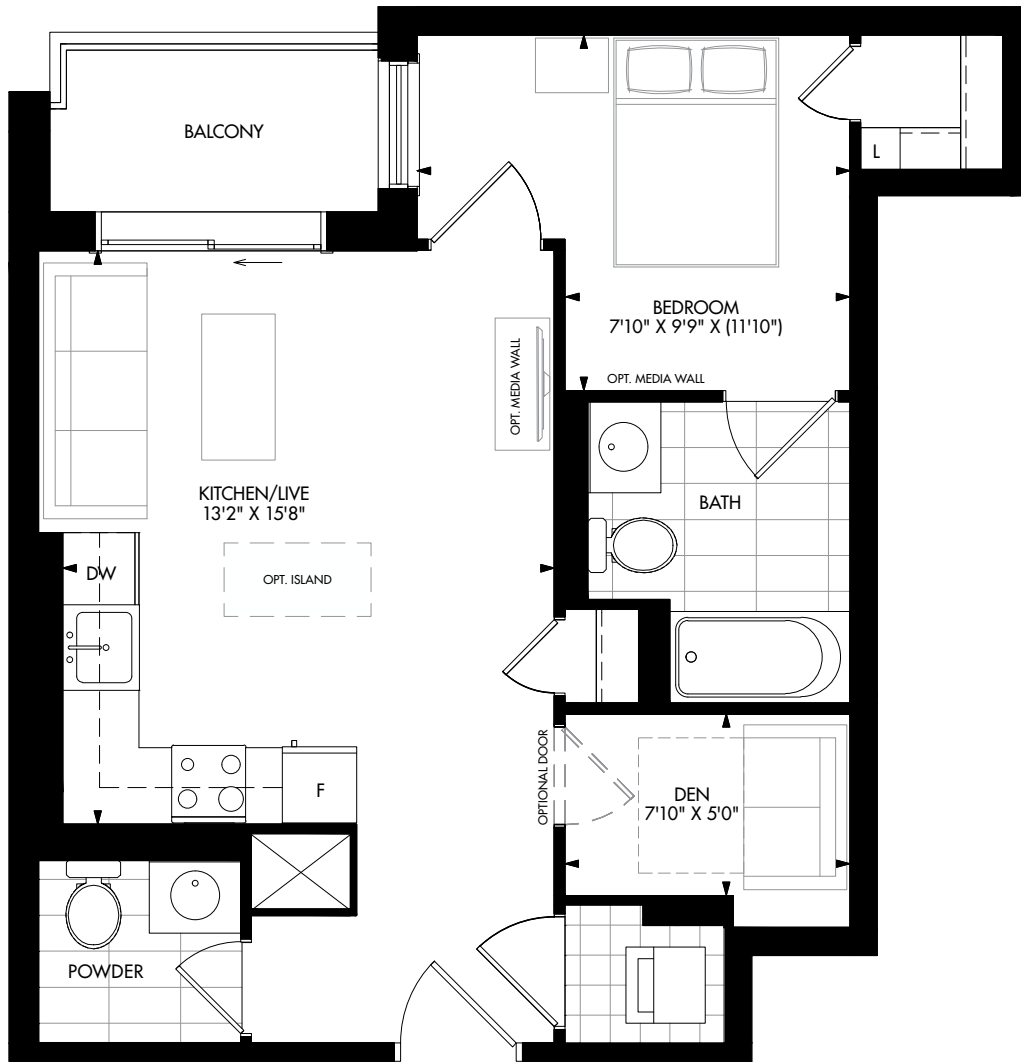
# CH1P | C01P



CARDING  
HOUSE

## One Bedroom + Den

Interior: 627 s.f. | Exterior: 44 s.f. | Total: 671 s.f.



2nd-3rd Floor



4th-5th Floor

All illustrations are artist's concept. All dimensions are approximate. Prices, specifications, terms and conditions subject to change without notice. Pricing, Incentives, availability, and plans are subject to change without notice. Features are as per plan and as per Schedule A are subject to change without notice. Images are for marketing purposes only and may not reflect included/available features. Note: Actual usable floor space may vary from the stated floor area. E.&O.E.

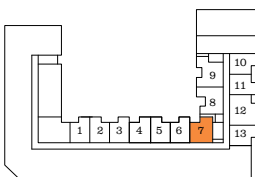
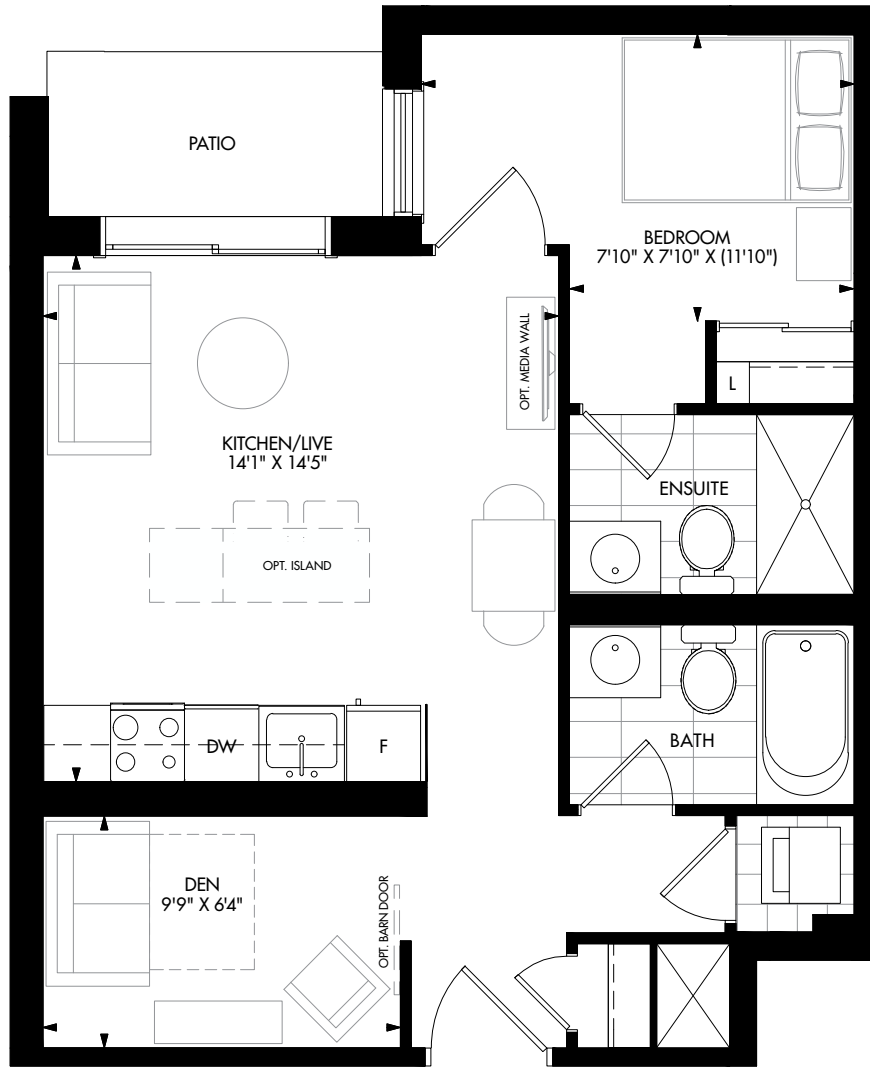
# C010

mattamyHOMES

CARDING  
HOUSE

## One Bedroom + Den

Interior: 619 s.f. | Exterior: 41 s.f. | Total: 660 s.f.



Ground Floor

All illustrations are artist's concept. All dimensions are approximate. Prices, specifications, terms and conditions subject to change without notice. Pricing, Incentives, availability, and plans are subject to change without notice. Features are as per plan and as per Schedule A are subject to change without notice. Images are for marketing purposes only and may not reflect included/available features. Note: Actual usable floor space may vary from the stated floor area. E.&O.E.

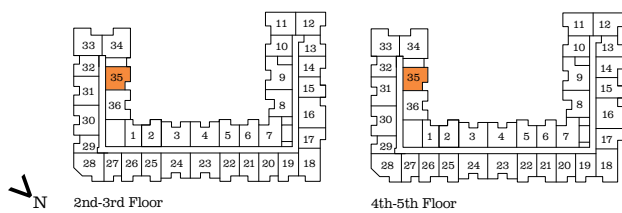
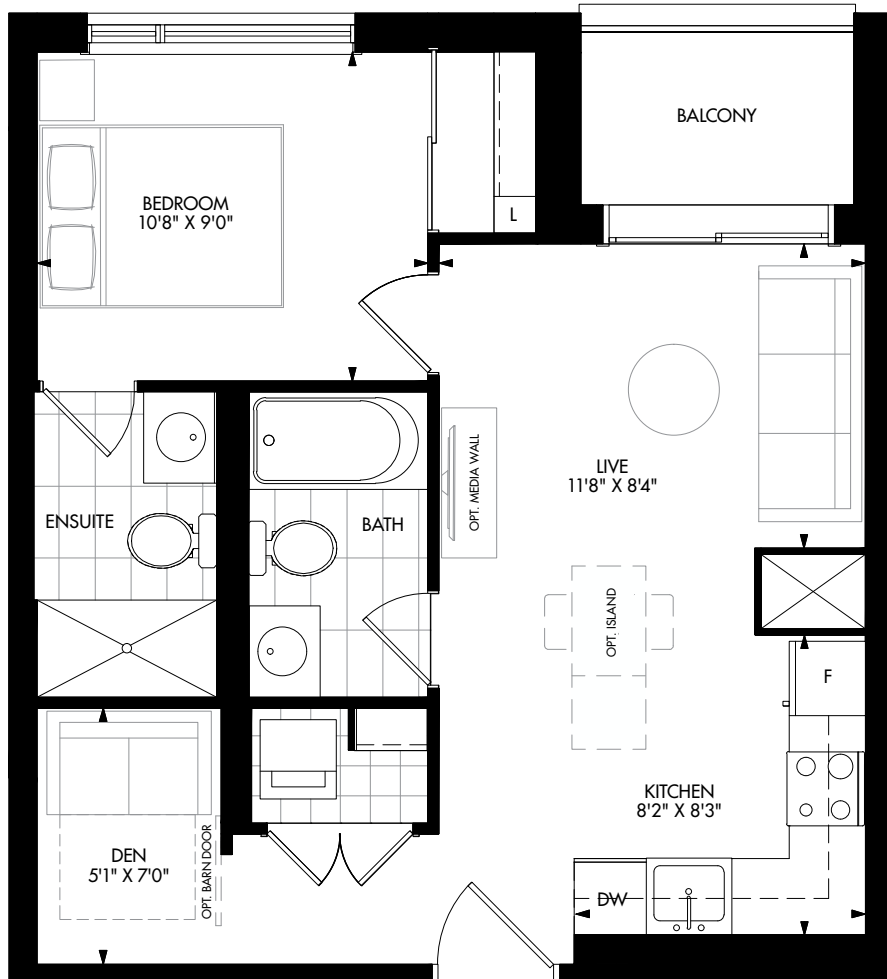
# CH1N | C01N



CARDING HOUSE

## One Bedroom + Den

Interior: 584 s.f. | Exterior: 39 s.f. | Total: 623 s.f.



All illustrations are artist's concept. All dimensions are approximate. Prices, specifications, terms and conditions subject to change without notice. Pricing, Incentives, availability, and plans are subject to change without notice. Features are as per plan and as per Schedule A are subject to change without notice. Images are for marketing purposes only and may not reflect included/available features. Note: Actual usable floor space may vary from the stated floor area. E.&O.E.

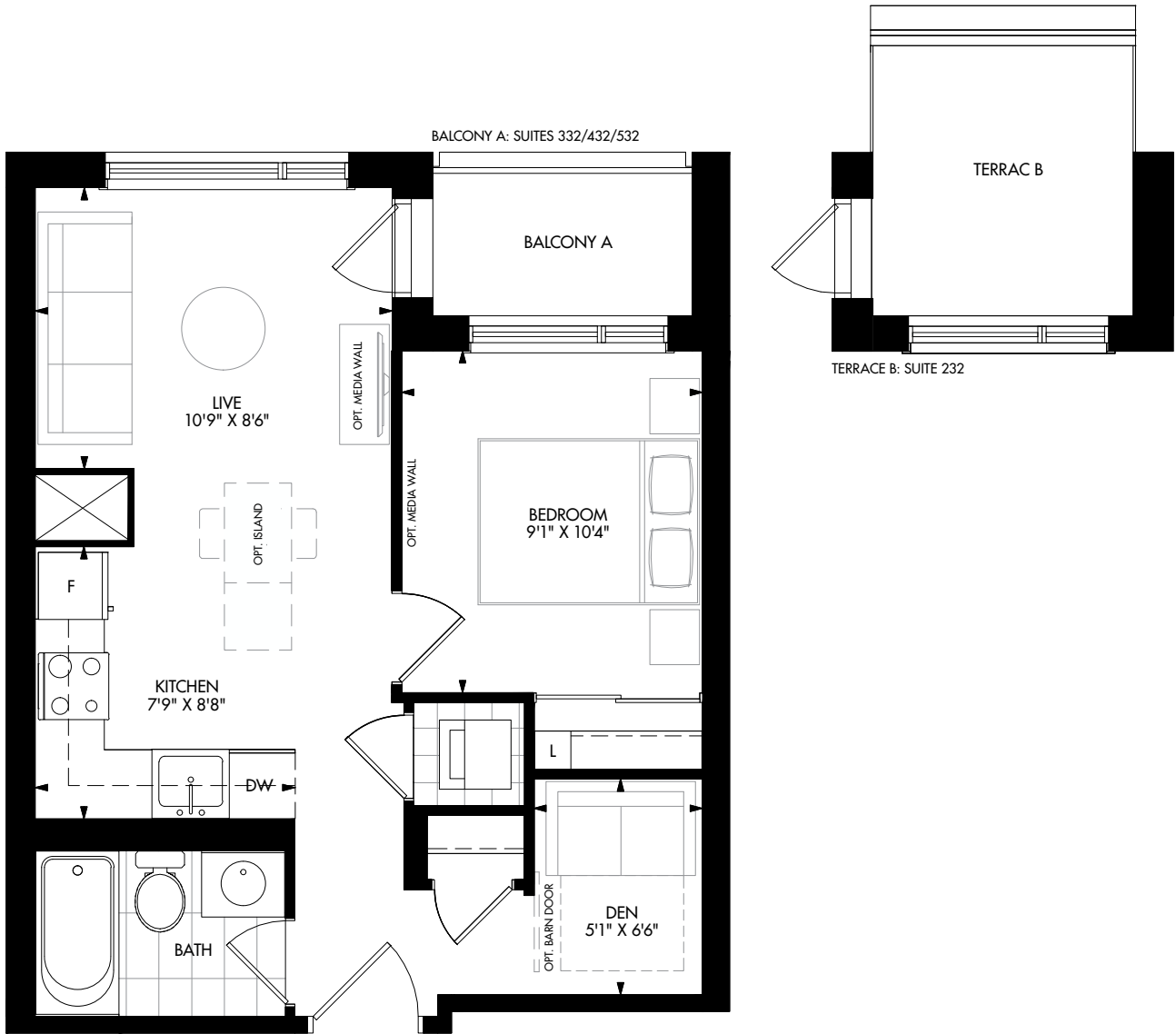
# CH1H | C01H



CARDING HOUSE

## One Bedroom + Den

Interior: 502 s.f. | Exterior: 40 s.f. | Total: 542 s.f.

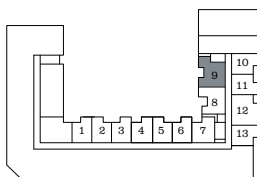
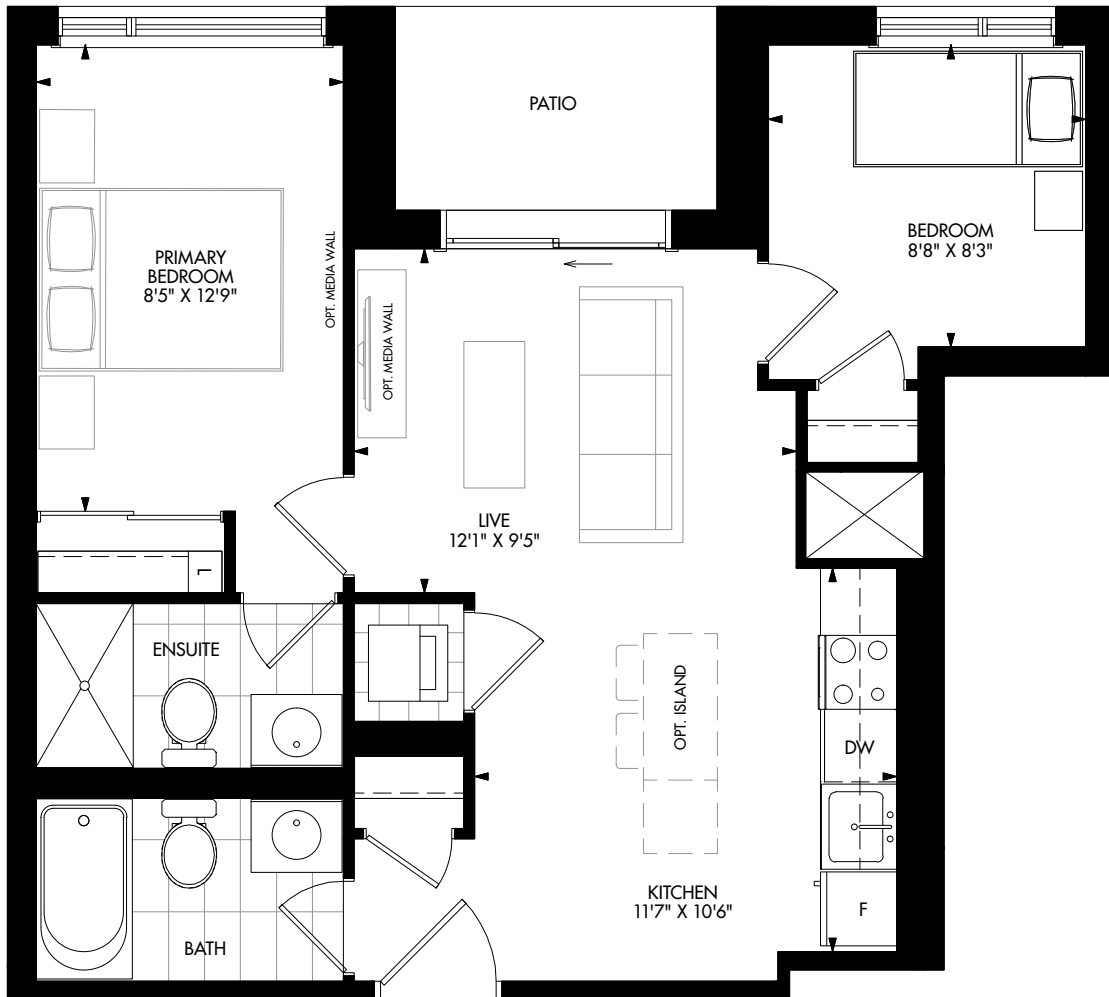


All illustrations are artist's concept. All dimensions are approximate. Prices, specifications, terms and conditions subject to change without notice. Pricing, Incentives, availability, and plans are subject to change without notice. Features are as per plan and as per Schedule A are subject to change without notice. Images are for marketing purposes only and may not reflect included/available features. Note: Actual usable floor space may vary from the stated floor area. E.&O.E.



## Two Bedroom

Interior: 685 s.f. | Exterior: 49 s.f. | Total: 734 s.f.

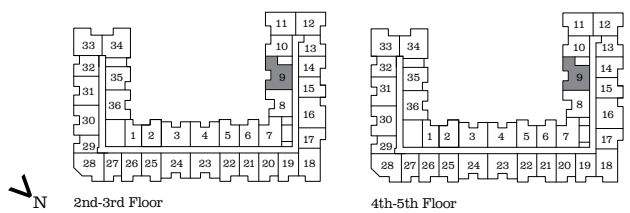
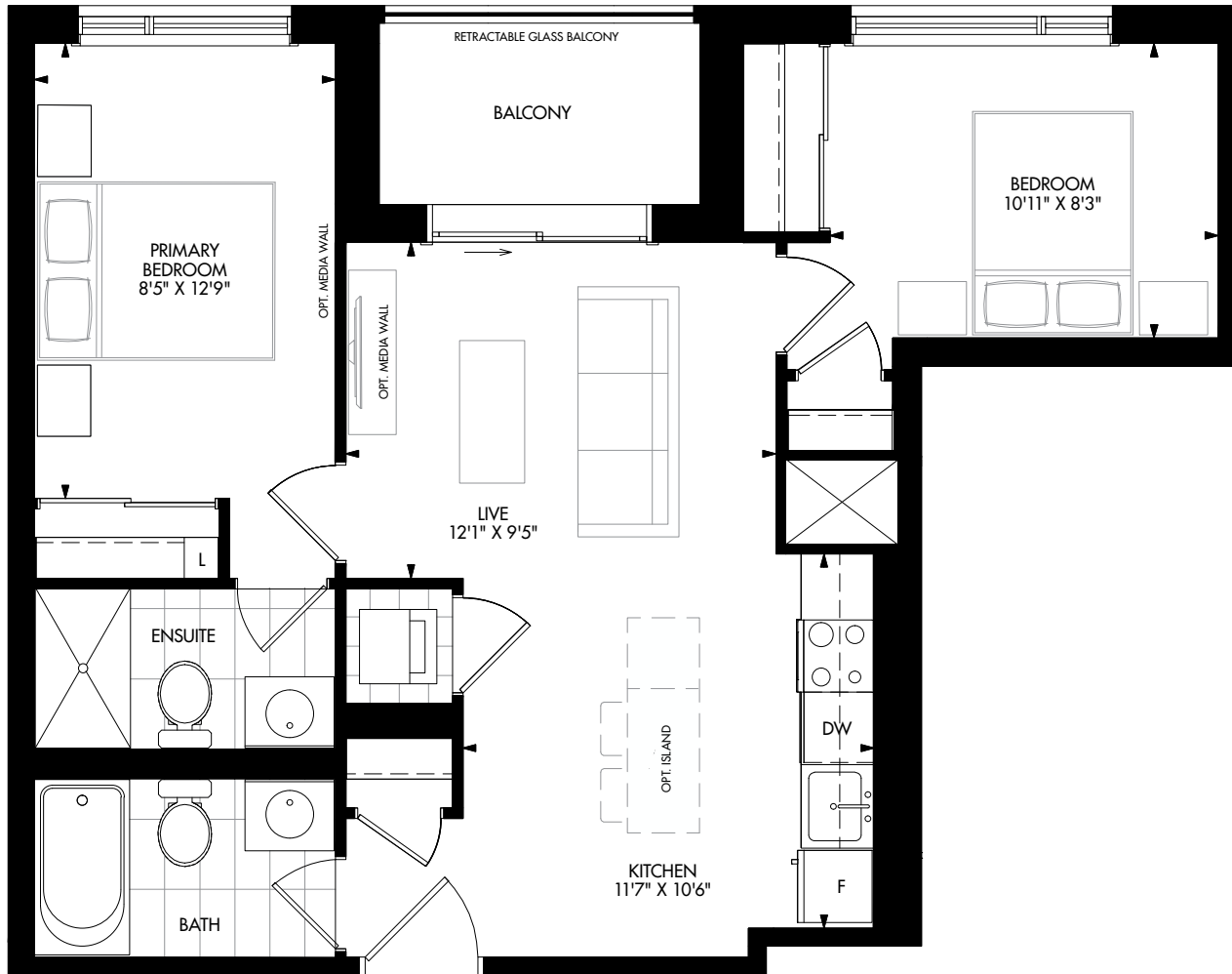


N Ground Floor

All illustrations are artist's concept. All dimensions are approximate. Prices, specifications, terms and conditions subject to change without notice. Pricing, Incentives, availability, and plans are subject to change without notice. Features are as per plan and as per Schedule A are subject to change without notice. Images are for marketing purposes only and may not reflect included/available features. Note: Actual usable floor space may vary from the stated floor area. E.&O.E.

## Two Bedroom

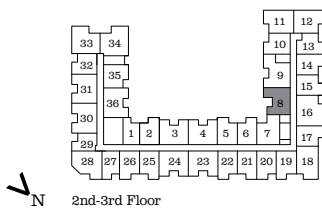
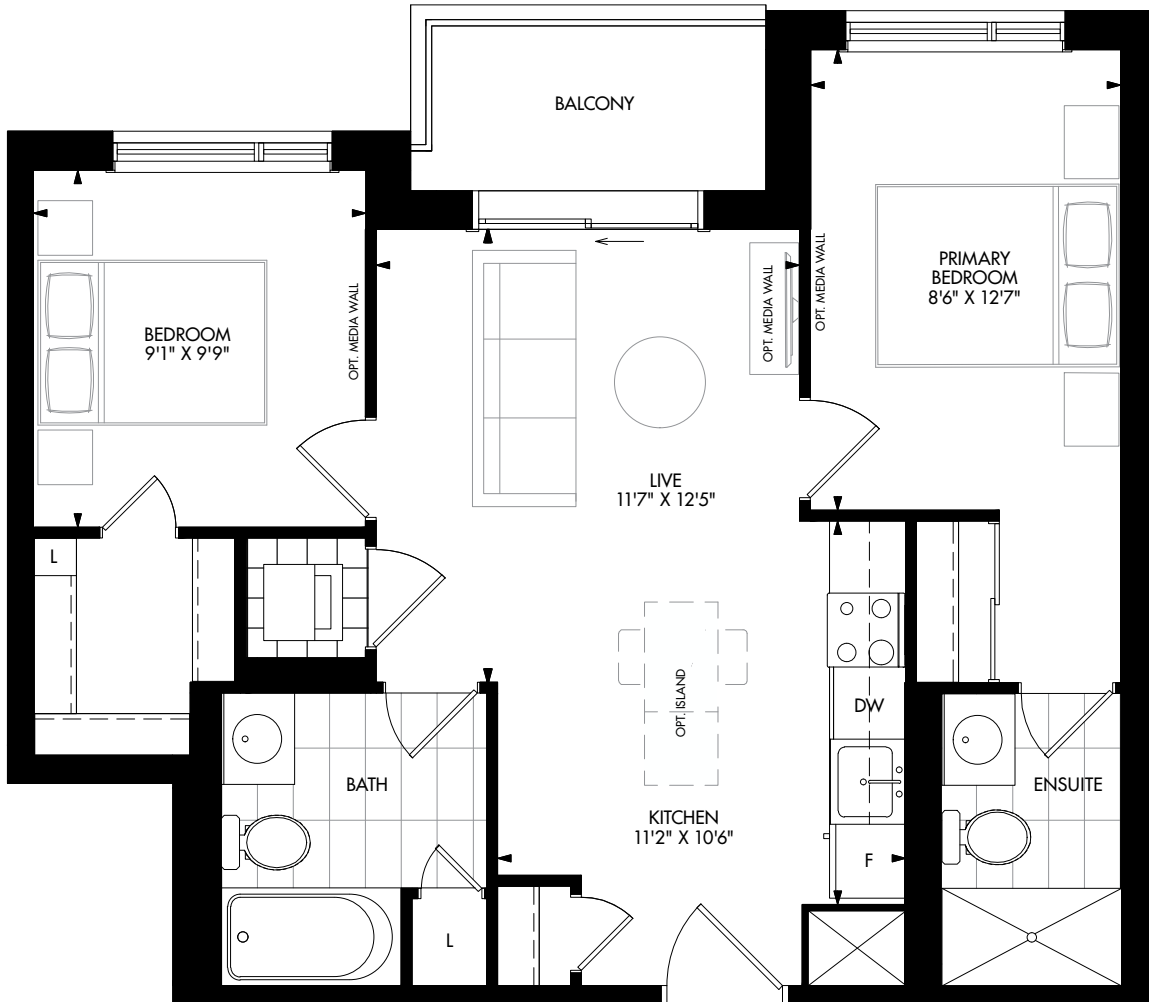
Interior: 714 s.f. | Exterior: 50 s.f. | Total: 764 s.f.



All illustrations are artist's concept. All dimensions are approximate. Prices, specifications, terms and conditions subject to change without notice. Pricing, Incentives, availability, and plans are subject to change without notice. Features are as per plan and as per Schedule A are subject to change without notice. Images are for marketing purposes only and may not reflect included/available features. Note: Actual usable floor space may vary from the stated floor area. E.&O.E.

## Two Bedroom

Interior: 718 s.f. | Exterior: 47 s.f. | Total: 765 s.f.



2nd-3rd Floor

All illustrations are artist's concept. All dimensions are approximate. Prices, specifications, terms and conditions subject to change without notice. Pricing, Incentives, availability, and plans are subject to change without notice. Features are as per plan and as per Schedule A are subject to change without notice. Images are for marketing purposes only and may not reflect included/available features. Note: Actual usable floor space may vary from the stated floor area. E.&O.E.

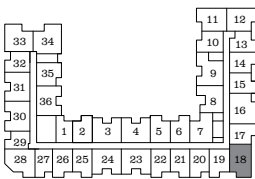
# CH2J | C02J



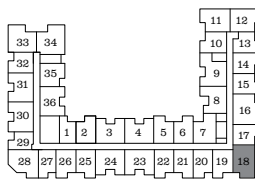
CARDING HOUSE

## Two Bedroom

Interior: 807 s.f. | Exterior: 40 s.f. | Total: 847 s.f.



2nd-3rd Floor



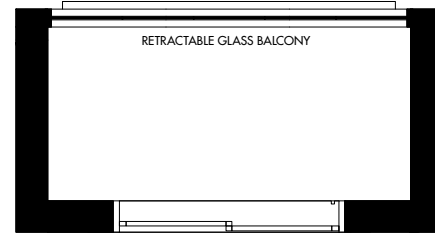
4th-5th Floor

All illustrations are artist's concept. All dimensions are approximate. Prices, specifications, terms and conditions subject to change without notice. Pricing, Incentives, availability, and plans are subject to change without notice. Features are as per plan and as per Schedule A are subject to change without notice. Images are for marketing purposes only and may not reflect included/available features. Note: Actual usable floor space may vary from the stated floor area. E.&O.E.

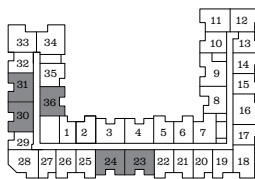
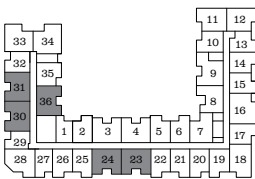
## Two Bedroom

Interior: 737 s.f. | Exterior: 49 s.f. | Total: 786 s.f.

SUITES: BALCONY WITH RETRACTABLE GLASS BALCONY  
230/231/236/330/331/336/430/431/436/530/531/536



SUITES: 223/224/323/324/423/424/523/524

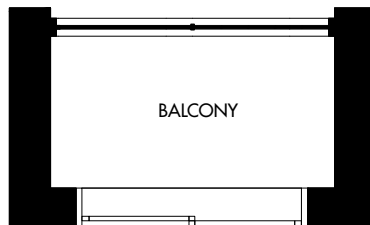
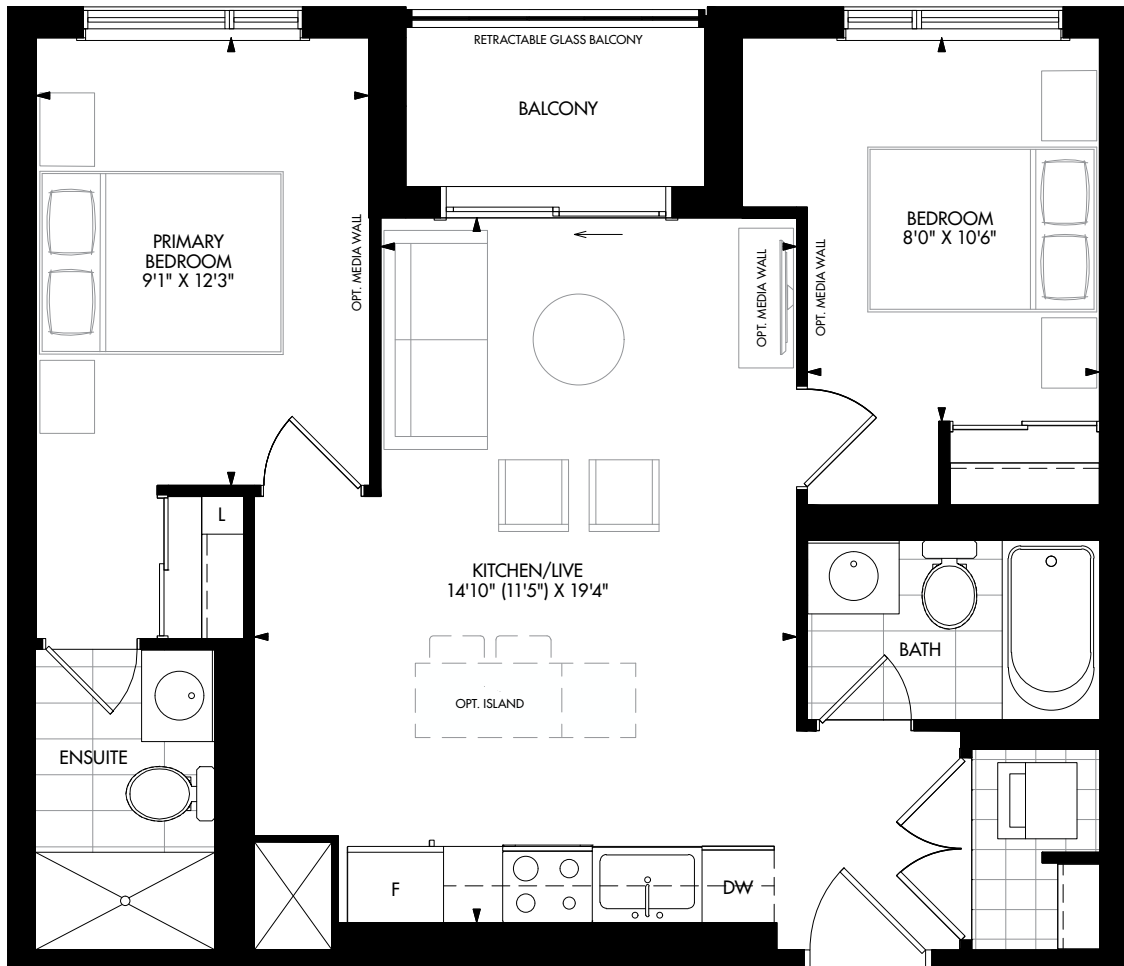


All illustrations are artist's concept. All dimensions are approximate. Prices, specifications, terms and conditions subject to change without notice. Pricing, Incentives, availability, and plans are subject to change without notice. Features are as per plan and as per Schedule A are subject to change without notice. Images are for marketing purposes only and may not reflect included/available features. Note: Actual usable floor space may vary from the stated floor area. E.&O.E.

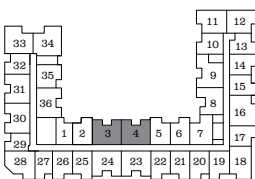
## Two Bedroom

Interior: 749 s.f. | Exterior: 38 s.f. | Total: 787 s.f.

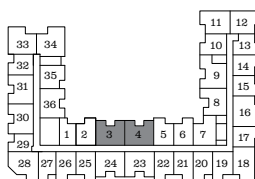
SUITES: BALCONY WITH RETRACTABLE GLASS BALCONY  
204/304/404/504



SUITES: 203/303/403/503



2nd-3rd Floor

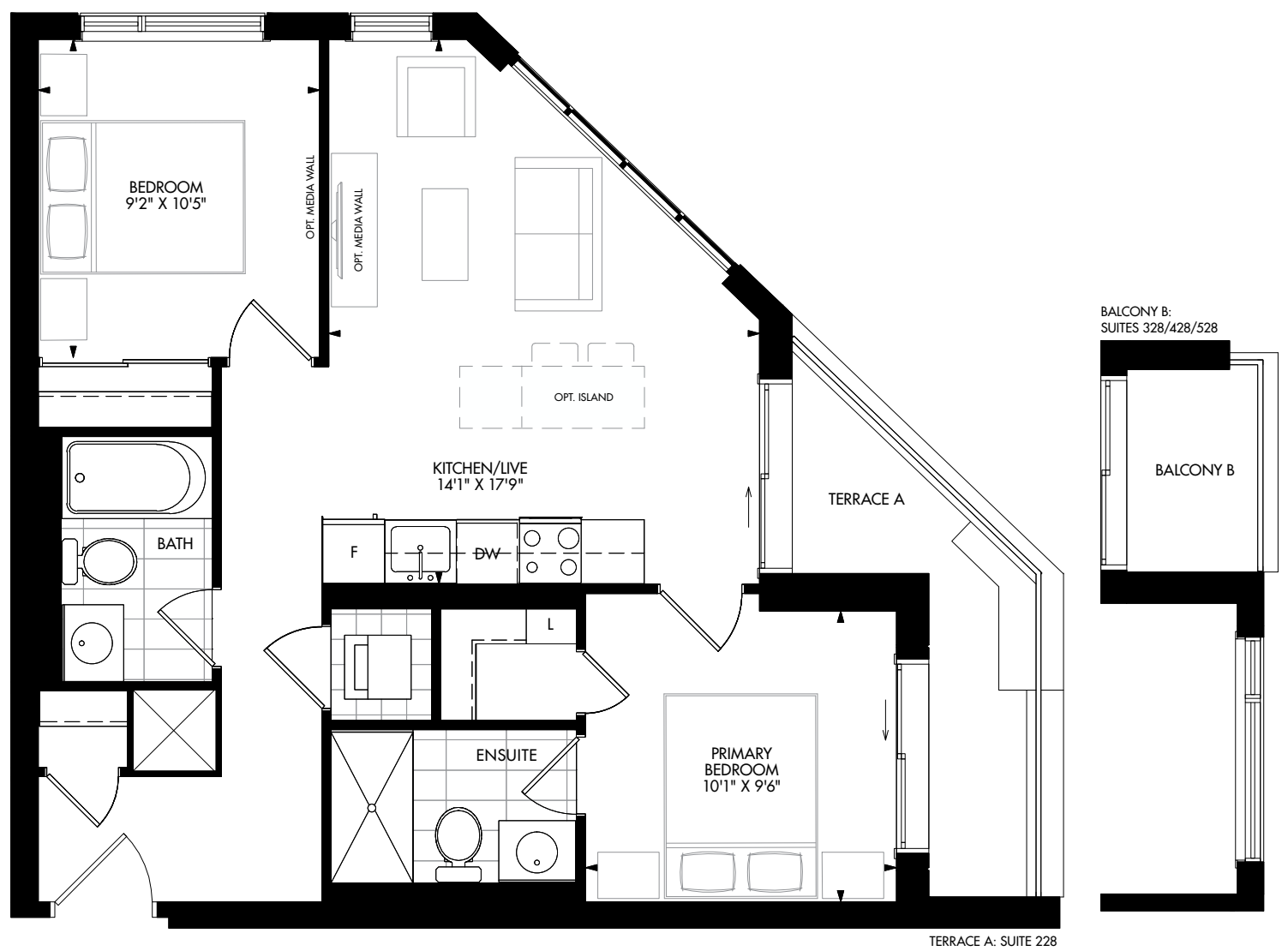


4th-5th Floor

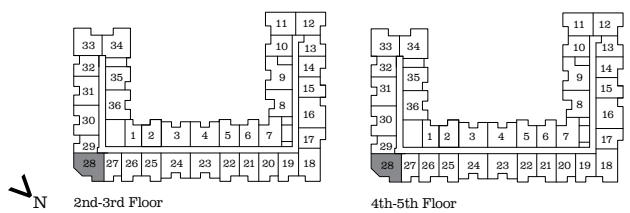


## Two Bedroom

Interior: 735 s.f. | Exterior: 33 s.f. | Total: 768 s.f.



TERRACE A: SUITE 228



All illustrations are artist's concept. All dimensions are approximate. Prices, specifications, terms and conditions subject to change without notice. Pricing, Incentives, availability, and plans are subject to change without notice. Features are as per plan and as per Schedule A are subject to change without notice. Images are for marketing purposes only and may not reflect included/available features. Note: Actual usable floor space may vary from the stated floor area. E.&O.E.

### Two Bedroom

Interior: 780 s.f. | Exterior: 75 s.f. | Total: 855 s.f.

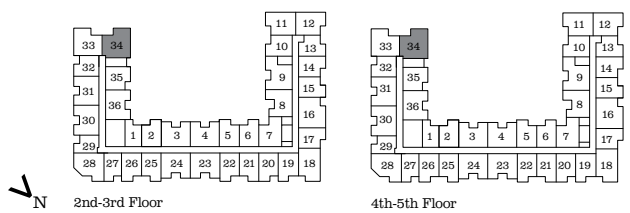
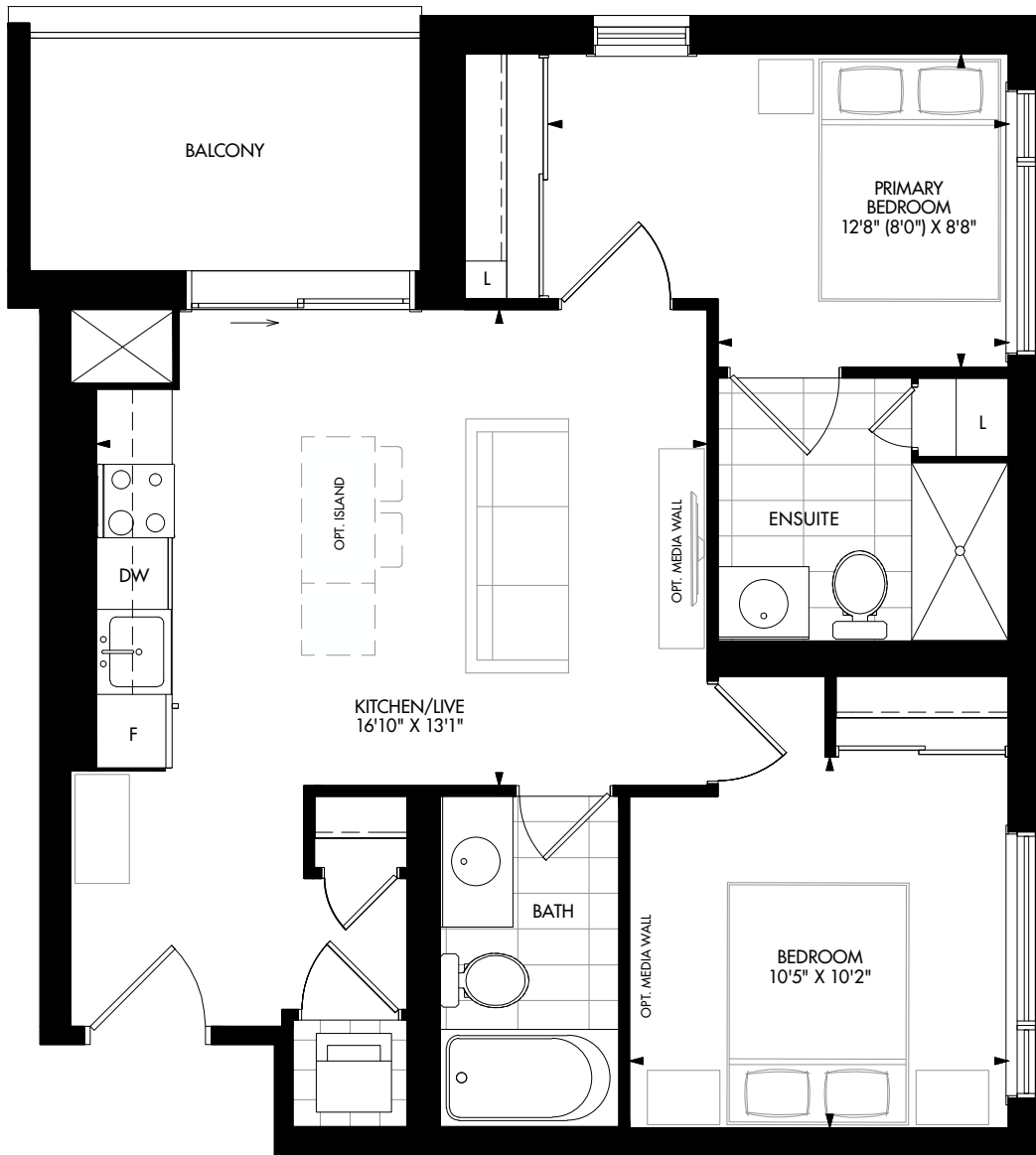


All illustrations are artist's concept. All dimensions are approximate. Prices, specifications, terms and conditions subject to change without notice. Pricing, Incentives, availability, and plans are subject to change without notice. Features are as per plan and as per Schedule A are subject to change without notice. Images are for marketing purposes only and may not reflect included/available features. Note: Actual usable floor space may vary from the stated floor area. E.&O.E.



## Two Bedroom

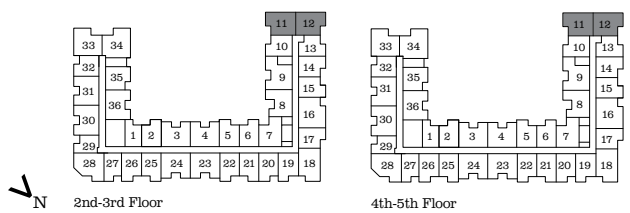
Interior: 761 s.f. | Exterior: 75 s.f. | Total: 836 s.f.



All illustrations are artist's concept. All dimensions are approximate. Prices, specifications, terms and conditions subject to change without notice. Pricing, Incentives, availability, and plans are subject to change without notice. Features are as per plan and as per Schedule A are subject to change without notice. Images are for marketing purposes only and may not reflect included/available features. Note: Actual usable floor space may vary from the stated floor area. E.&O.E.

## Two Bedroom

Interior: 764 s.f. | Exterior: 51 s.f. | Total: 815 s.f.



All illustrations are artist's concept. All dimensions are approximate. Prices, specifications, terms and conditions subject to change without notice. Pricing, Incentives, availability, and plans are subject to change without notice. Features are as per plan and as per Schedule A are subject to change without notice. Images are for marketing purposes only and may not reflect included/available features. Note: Actual usable floor space may vary from the stated floor area. E.&O.E.

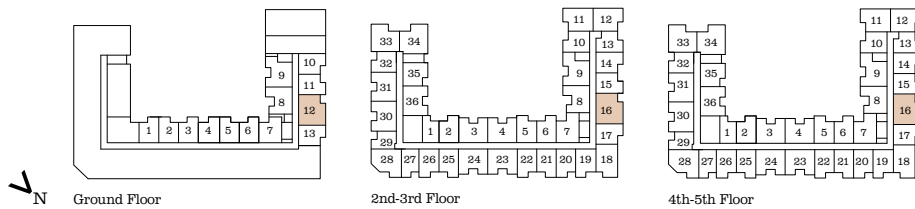
## Two Bedroom + Den

Interior: 820 s.f. | Exterior: 47 s.f. | Total: 867 s.f.



SUITE 112

SUITES: BALCONY WITH RETRACTABLE GLASS BALCONY  
216/316/416/516



All illustrations are artist's concept. All dimensions are approximate. Prices, specifications, terms and conditions subject to change without notice. Pricing, Incentives, availability, and plans are subject to change without notice. Features are as per plan and as per Schedule A are subject to change without notice. Images are for marketing purposes only and may not reflect included/available features. Note: Actual usable floor space may vary from the stated floor area. E.&O.E.

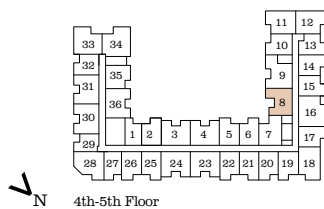
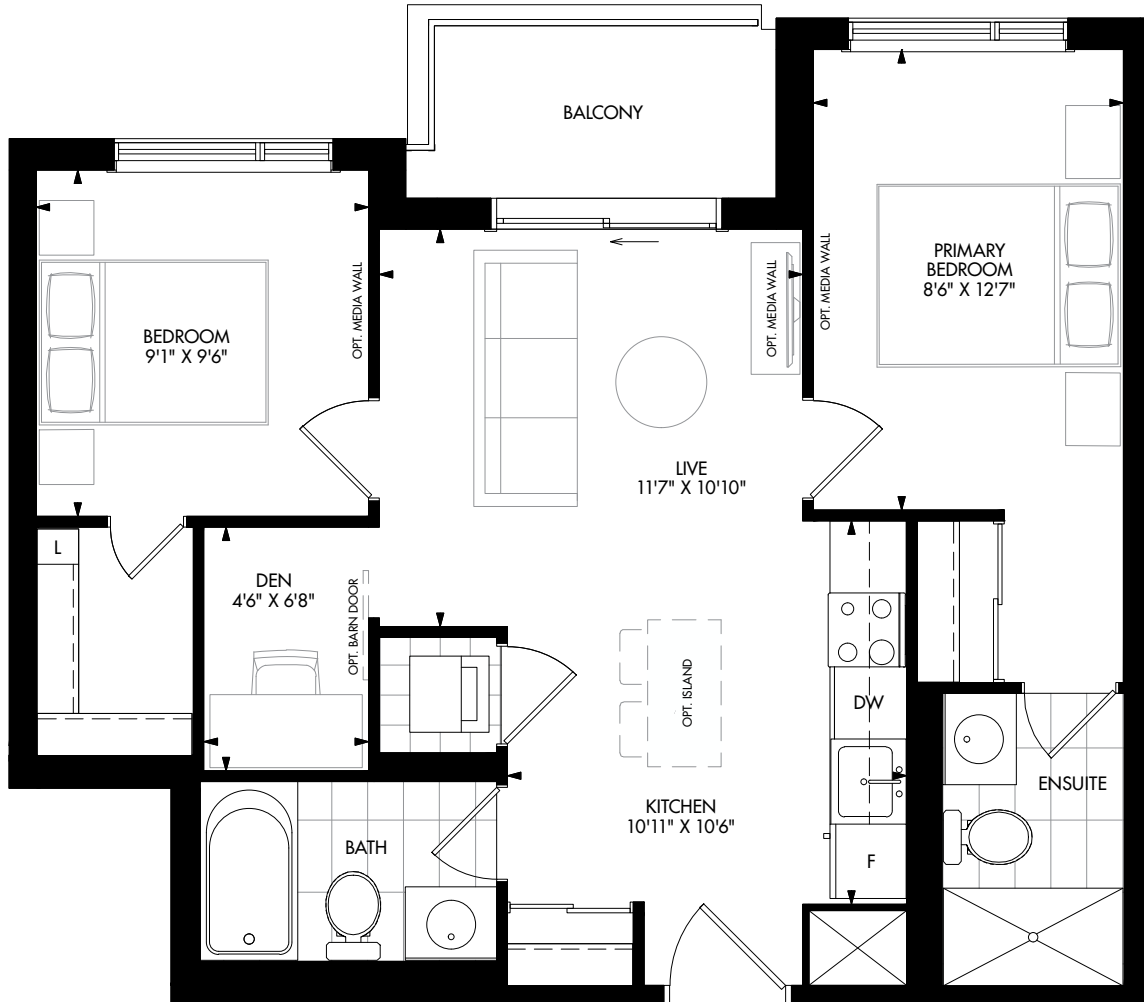
# CH2K | C02K



CARDING  
HOUSE

## Two Bedroom + Den

Interior: 718 s.f. | Exterior: 49 s.f. | Total: 767 s.f.



All illustrations are artist's concept. All dimensions are approximate. Prices, specifications, terms and conditions subject to change without notice. Pricing, Incentives, availability, and plans are subject to change without notice. Features are as per plan and as per Schedule A are subject to change without notice. Images are for marketing purposes only and may not reflect included/available features. Note: Actual usable floor space may vary from the stated floor area. E.&O.E.