



MEADOW
HEIGHTS
PORT COLBORNE

ARBOR



ELEVATION A



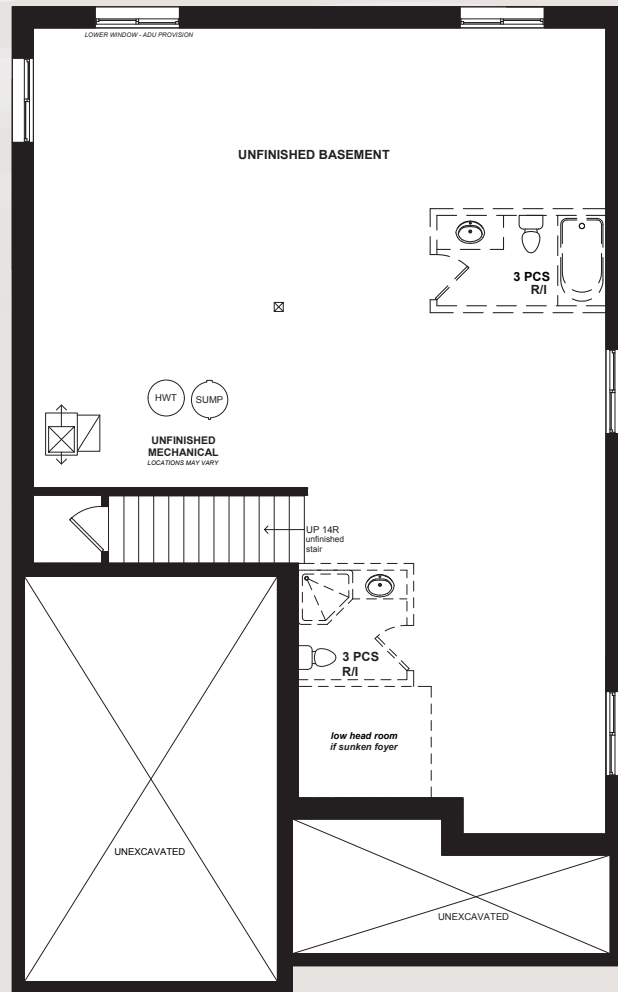
ELEVATION B

ELEVATION C

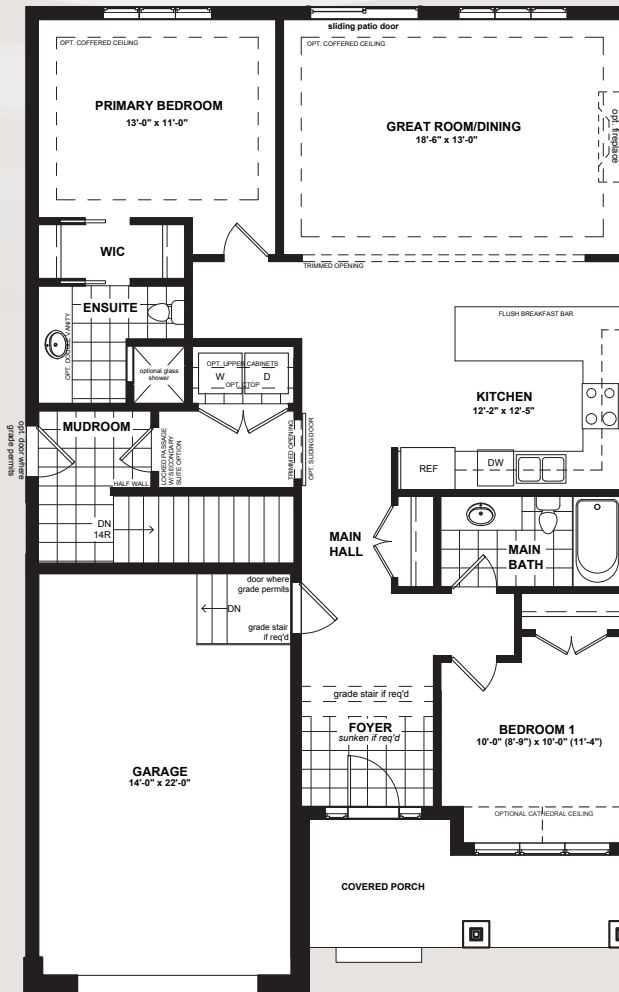
Actual usable floor space may vary from the stated floor area. Plans and elevations are artist's renderings and may contain options which are not standard on all models. Dunsire Homes Inc reserves the right to make changes to these floorplans, specifications, dimensions and elevations without prior notice and without compensation. Stated dimensions and square footages are approximate and should not be used as representation of the home's usable floor space or actual size. Any square footage of a single-family home or a multi-family home that is stated herein is approximate only, may vary from time to time, and remains subject to change without notice or compensation.

 **DUNSIRE** | EST. 2010
DEVELOPMENTS

www.Dunsire.com



UNFINISHED BASEMENT



MAIN FLOOR

1,235 SQ.FT



ARBOR


2 Bedrooms

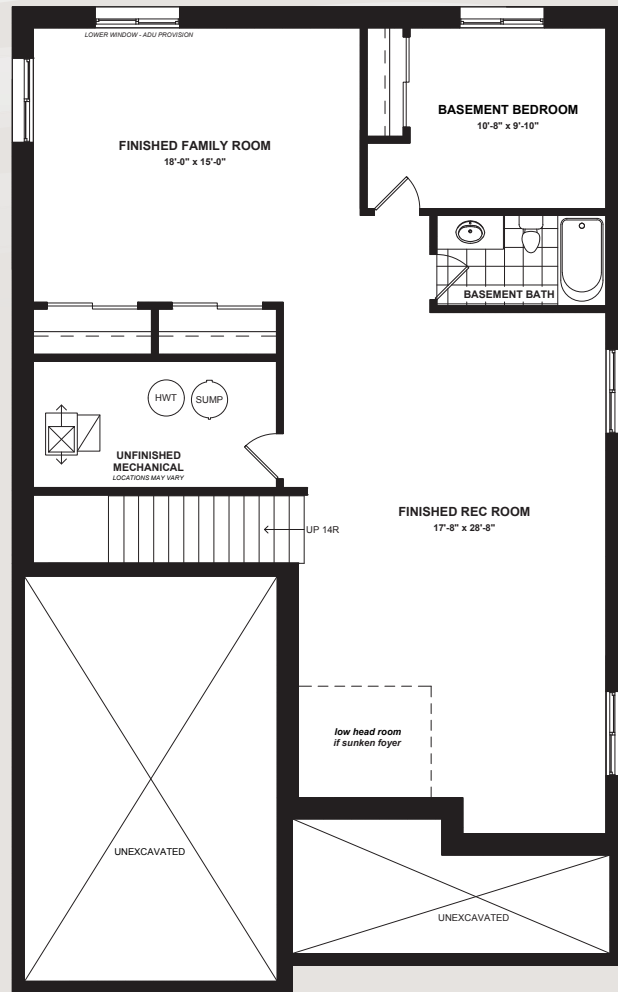

2 Bathrooms


1,235 Sq.Ft.

Actual usable floor space may vary from the stated floor area. Plans and elevations are artist's renderings and may contain options which are not standard on all models. Dunsire Homes Inc reserves the right to make changes to these floorplans, specifications, dimensions and elevations without prior notice and without compensation. Stated dimensions and square footages are approximate and should not be used as representation of the home's usable floor space or actual size. Any square footage of a single-family home or a multi-family home that is stated herein is approximate only, may vary from time to time, and remains subject to change without notice or compensation

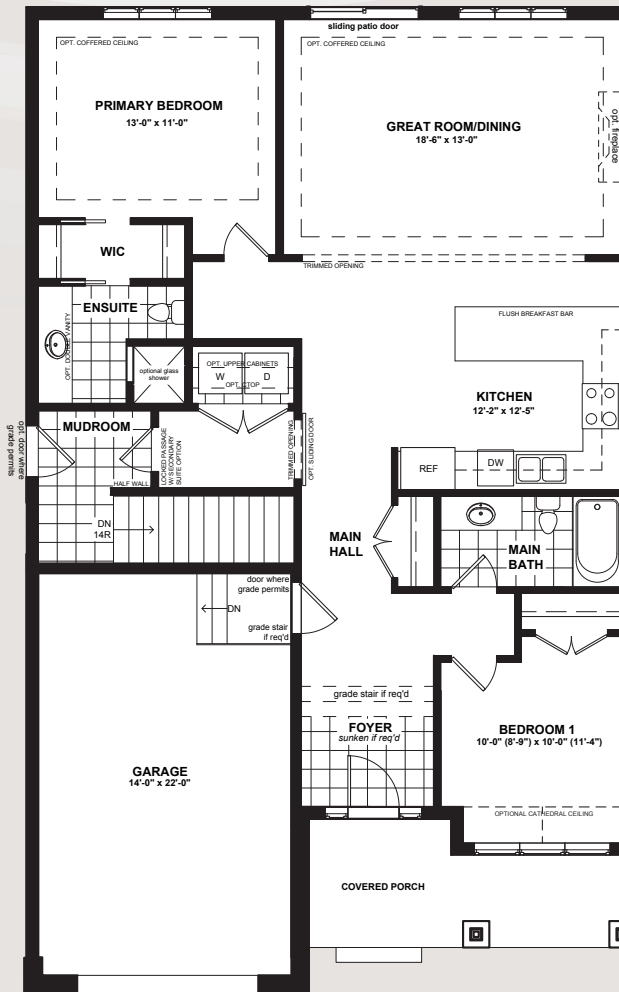


www.Dunsire.com



OPT. FINISHED BASEMENT

1,447 SQ.FT



MAIN FLOOR

1,235 SQ.FT



ARBOR


3 Bedrooms
(2+1)

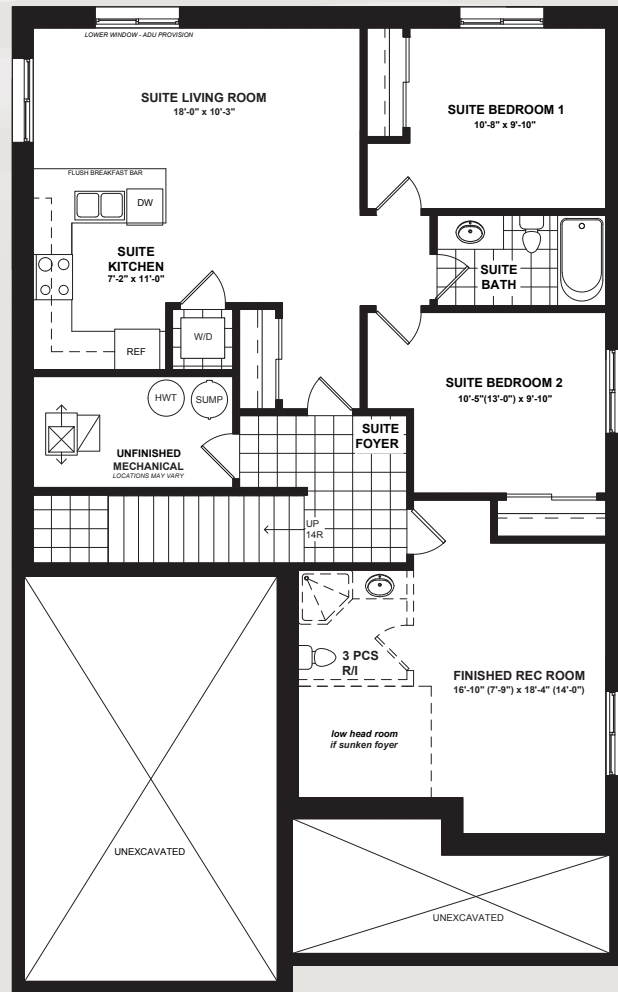

3 Bathrooms
(2+1)


2,682 Sq.Ft.
(1,235+1,447)

Actual usable floor space may vary from the stated floor area. Plans and elevations are artist's renderings and may contain options which are not standard on all models. Dunsire Homes Inc reserves the right to make changes to these floorplans, specifications, dimensions and elevations without prior notice and without compensation. Stated dimensions and square footages are approximate and should not be used as representation of the home's usable floor space or actual size. Any square footage of a single-family home or a multi-family home that is stated herein is approximate only, may vary from time to time, and remains subject to change without notice or compensation.

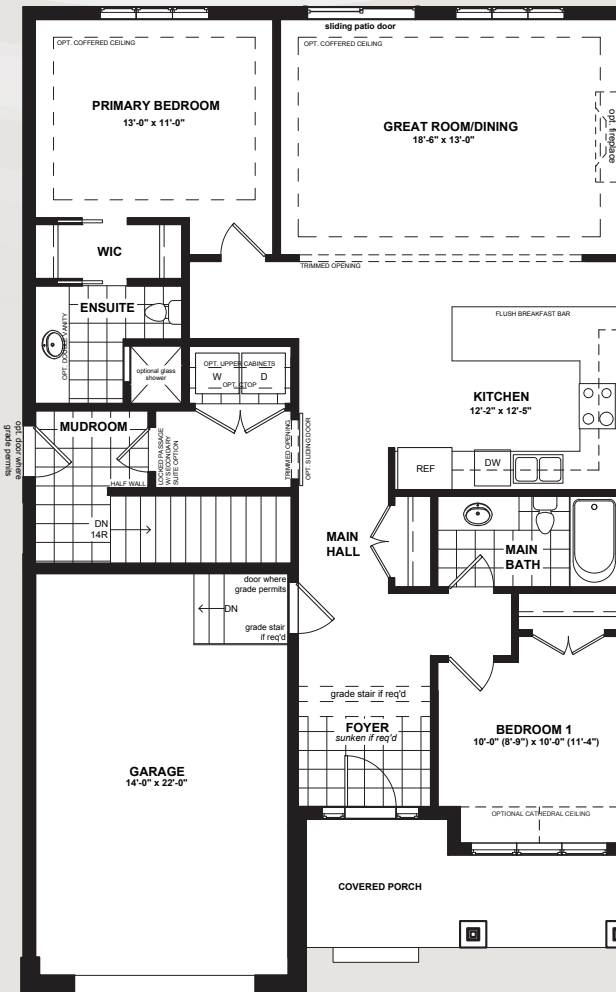


www.Dunsire.com



OPT. SECONDARY SUITE

1,447 SQ.FT



MAIN FLOOR

1,235 SQ.FT



ARBOR


4 Bedrooms
(2+2)


3 Bathrooms
(2+1)


2,682 Sq.Ft.
(1,447+1,235)

Actual usable floor space may vary from the stated floor area. Plans and elevations are artist's renderings and may contain options which are not standard on all models. Dunsire Homes Inc reserves the right to make changes to these floorplans, specifications, dimensions and elevations without prior notice and without compensation. Stated dimensions and square footages are approximate and should not be used as representation of the home's usable floor space or actual size. Any square footage of a single-family home or a multi-family home that is stated herein is approximate only, may vary from time to time, and remains subject to change without notice or compensation.



www.Dunsire.com



MEADOW
HEIGHTS
PORT COLBORNE



ELEVATION C

Actual usable floor space may vary from the stated floor area. Plans and elevations are artist's renderings and may contain options which are not standard on all models. Dunsire Homes Inc reserves the right to make changes to these floorplans, specifications, dimensions and elevations without prior notice and without compensation. Stated dimensions and square footages are approximate and should not be used as representation of the home's usable floor space or actual size. Any square footage of a single-family home or a multi-family home that is stated herein is approximate only, may vary from time to time, and remains subject to change without notice or compensation.

ASPEN



ELEVATION A



ELEVATION B

 **DUNSIRE** | EST. 2010
DEVELOPMENTS

www.Dunsire.com



MEADOW
HEIGHTS
PORT COLBORNE



ELEVATION C

Actual usable floor space may vary from the stated floor area. Plans and elevations are artist's renderings and may contain options which are not standard on all models. Dunsire Homes Inc reserves the right to make changes to these floorplans, specifications, dimensions and elevations without prior notice and without compensation. Stated dimensions and square footages are approximate and should not be used as representation of the home's usable floor space or actual size. Any square footage of a single-family home or a multi-family home that is stated herein is approximate only, may vary from time to time, and remains subject to change without notice or compensation.

LAUREL



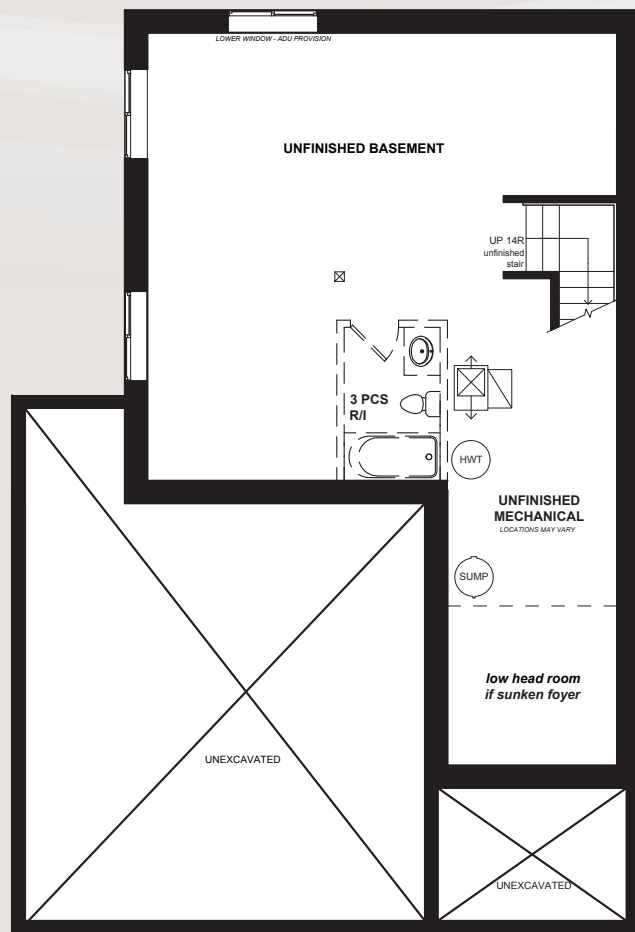
ELEVATION A



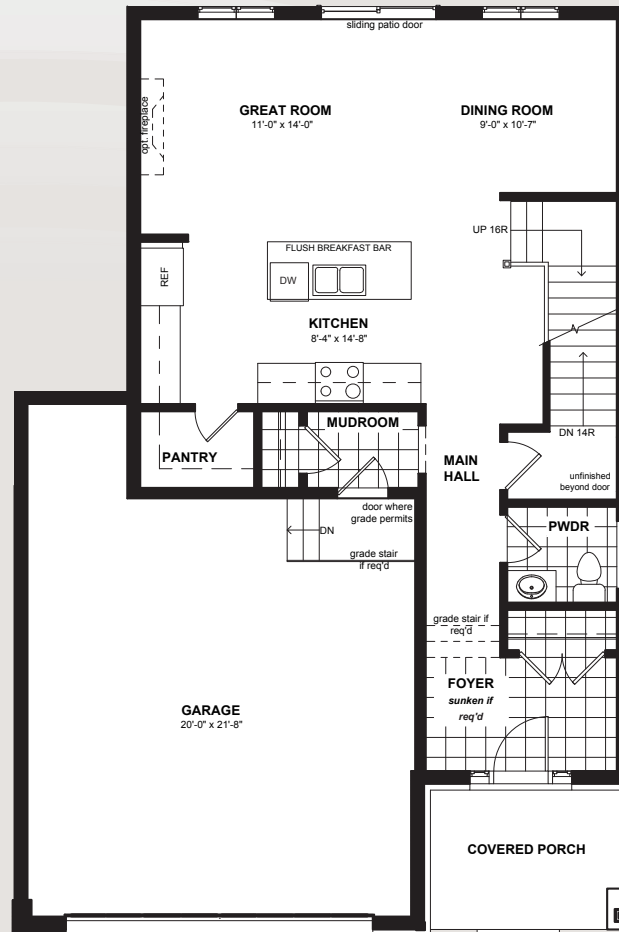
ELEVATION B

 **DUNSIRE** | EST. 2010
DEVELOPMENTS

www.Dunsire.com

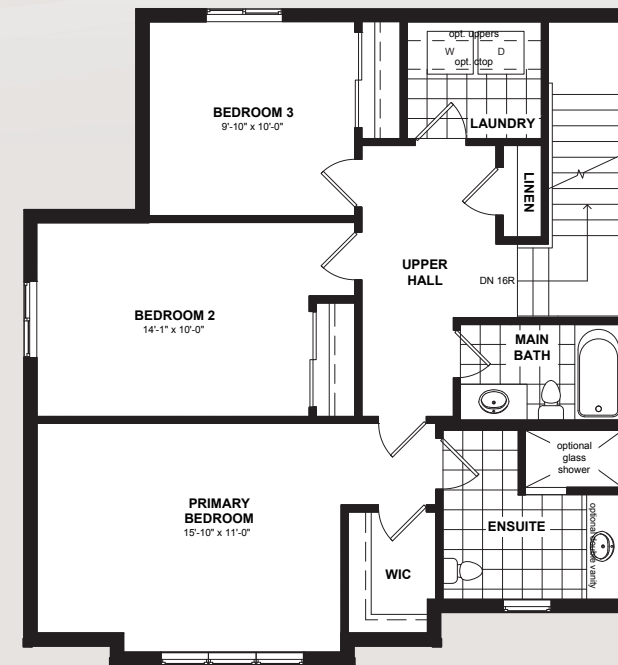


UNFINISHED BASEMENT



MAIN FLOOR

814 SQ.FT



SECOND FLOOR

1,003 SQ.FT



LAUREL

 3 Bedrooms

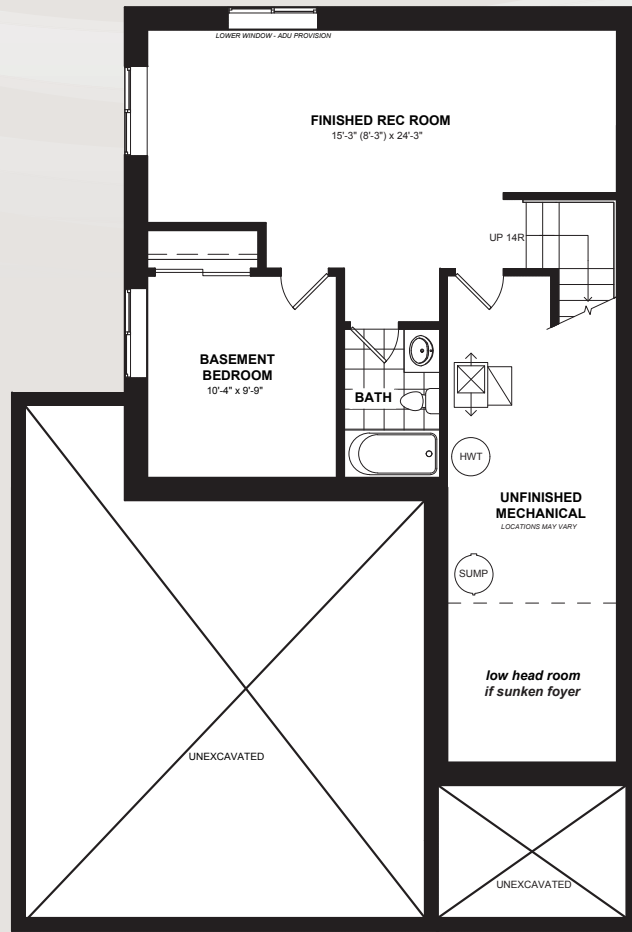
 2.5 Bathrooms

 1,817 Sq.Ft.

Actual usable floor space may vary from the stated floor area. Plans and elevations are artist's renderings and may contain options which are not standard on all models. Dunsire Homes Inc reserves the right to make changes to these floorplans, specifications, dimensions and elevations without prior notice and without compensation. Stated dimensions and square footages are approximate and should not be used as representation of the home's usable floor space or actual size. Any square footage of a single-family home or a multi-family home that is stated herein is approximate only, may vary from time to time, and remains subject to change without notice or compensation.

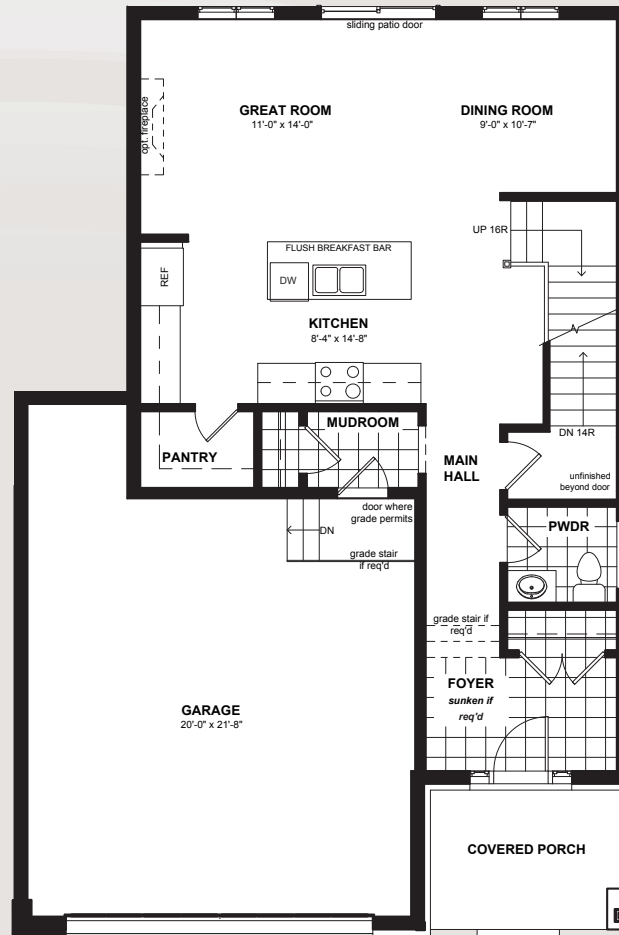


www.Dunsire.com



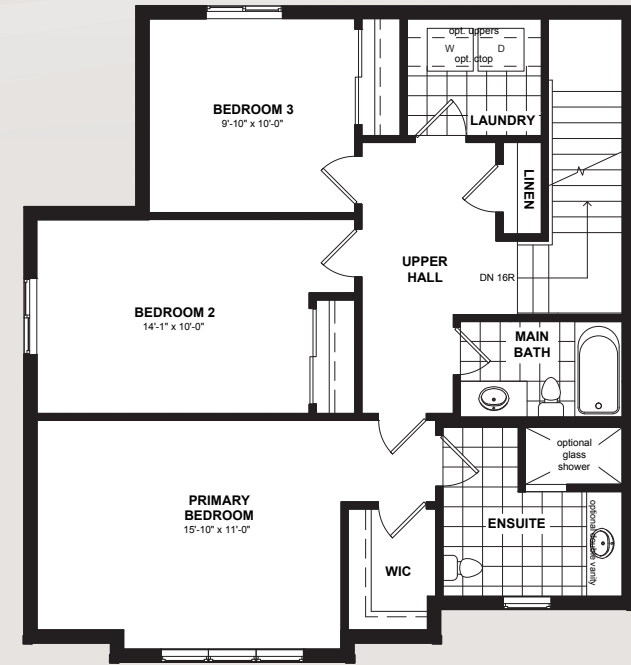
OPT. FINISHED BASEMENT

859 SQ.FT



MAIN FLOOR

814 SQ.FT



SECOND FLOOR

1,003 SQ.FT



LAUREL

4 Bedrooms
(3+1)

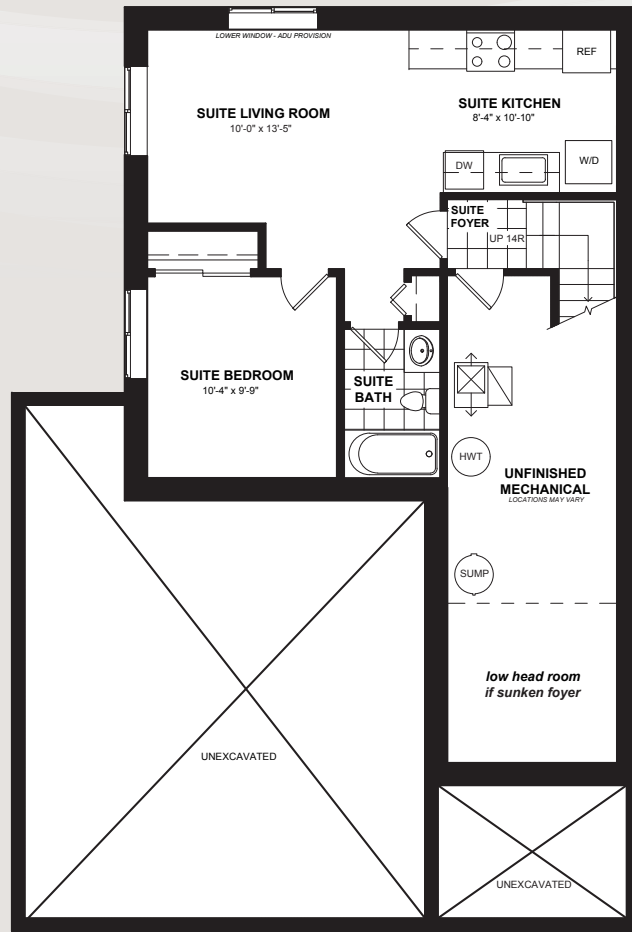
3.5 Bathrooms
(2.5+1)

2,676 Sq.Ft.
(1817+859)

Actual usable floor space may vary from the stated floor area. Plans and elevations are artist's renderings and may contain options which are not standard on all models. Dunsire Homes Inc reserves the right to make changes to these floorplans, specifications, dimensions and elevations without prior notice and without compensation. Stated dimensions and square footages are approximate and should not be used as representation of the home's usable floor space or actual size. Any square footage of a single-family home or a multi-family home that is stated herein is approximate only, may vary from time to time, and remains subject to change without notice or compensation.

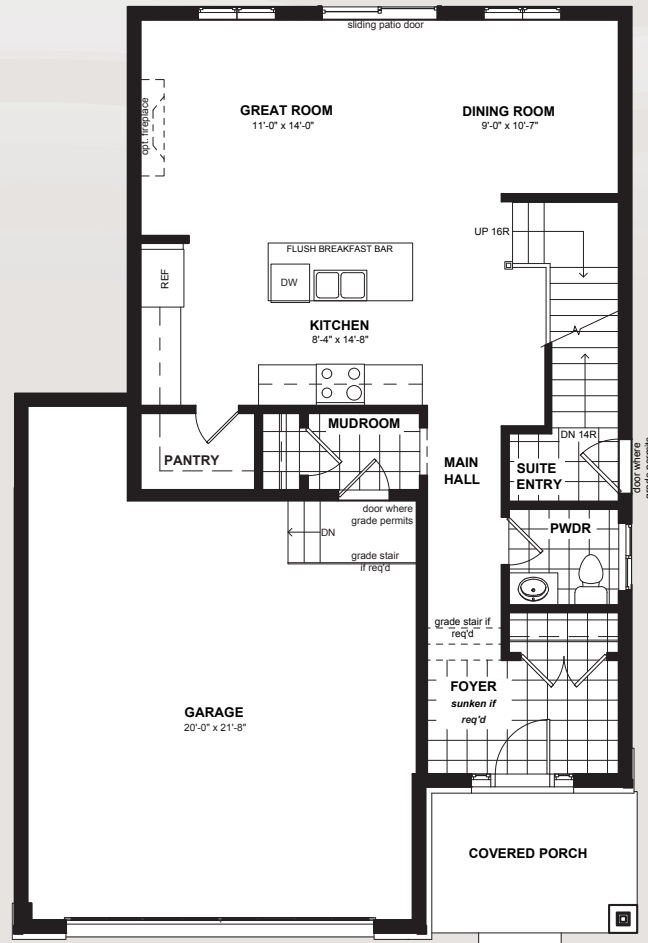


www.Dunsire.com



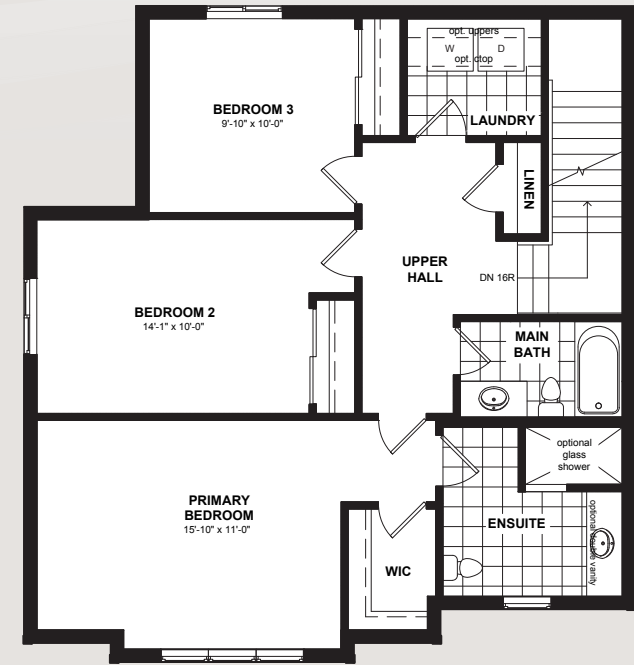
OPT. SECONDARY SUITE

859 SQ.FT



MAIN FLOOR

814 SQ.FT



SECOND FLOOR

1,003 SQ.FT



LAUREL

4 Bedrooms
(3+1)

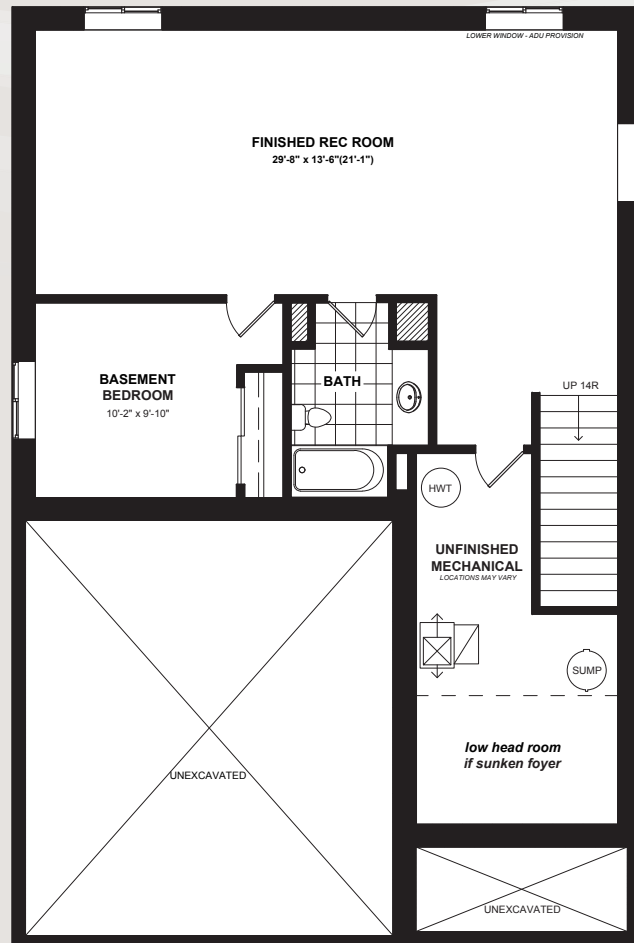
3.5 Bathrooms
(2.5+1)

2,676 Sq.Ft.
(1817+859)

Actual usable floor space may vary from the stated floor area. Plans and elevations are artist's renderings and may contain options which are not standard on all models. Dunsire Homes Inc reserves the right to make changes to these floorplans, specifications, dimensions and elevations without prior notice and without compensation. Stated dimensions and square footages are approximate and should not be used as representation of the home's usable floor space or actual size. Any square footage of a single-family home or a multi-family home that is stated herein is approximate only, may vary from time to time, and remains subject to change without notice or compensation.

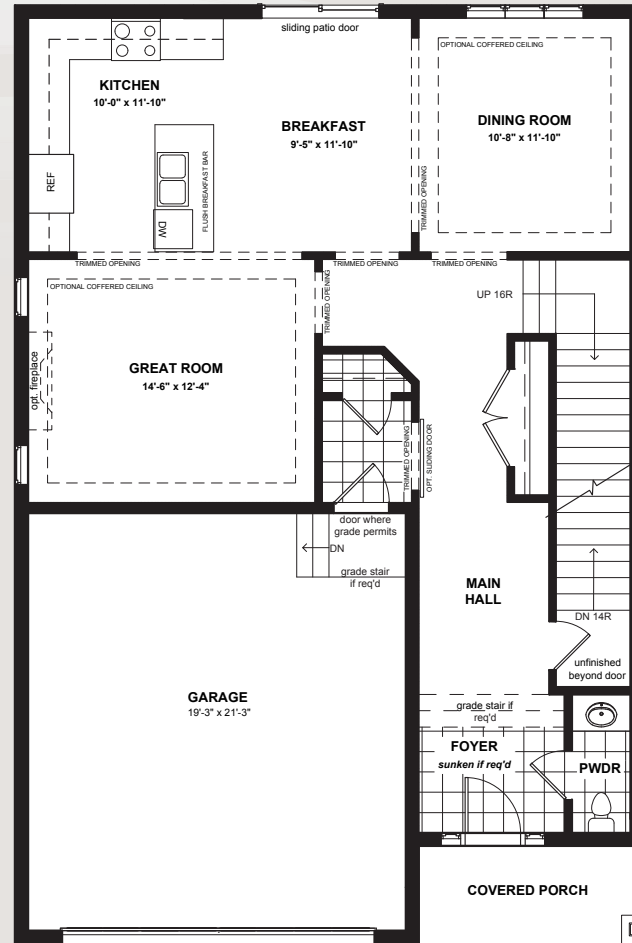


www.Dunsire.com



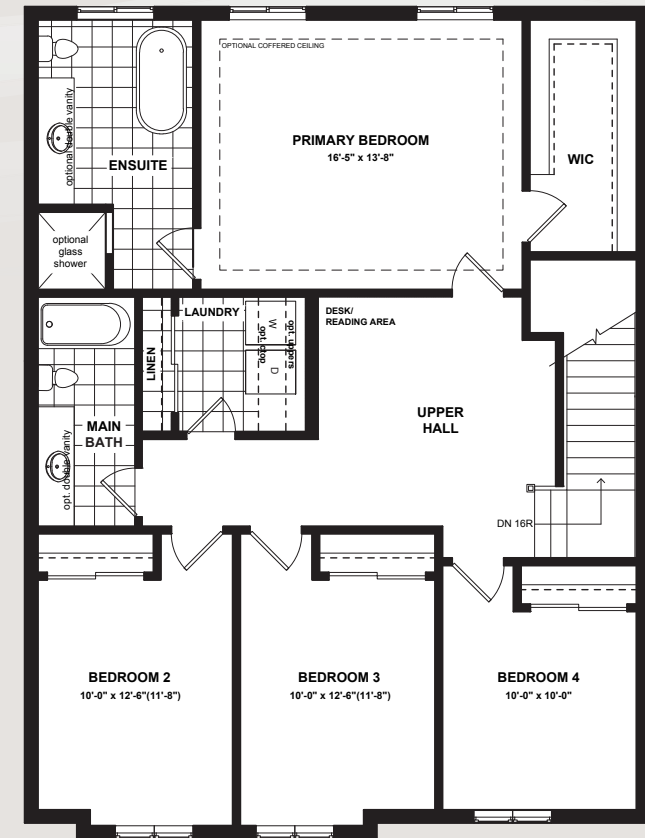
OPT. FINISHED BASEMENT

1,076 SQ.FT



MAIN FLOOR

1,026 SQ.FT



SECOND FLOOR

1,365 SQ.FT



ASPEN


5 Bedrooms
(4+1)

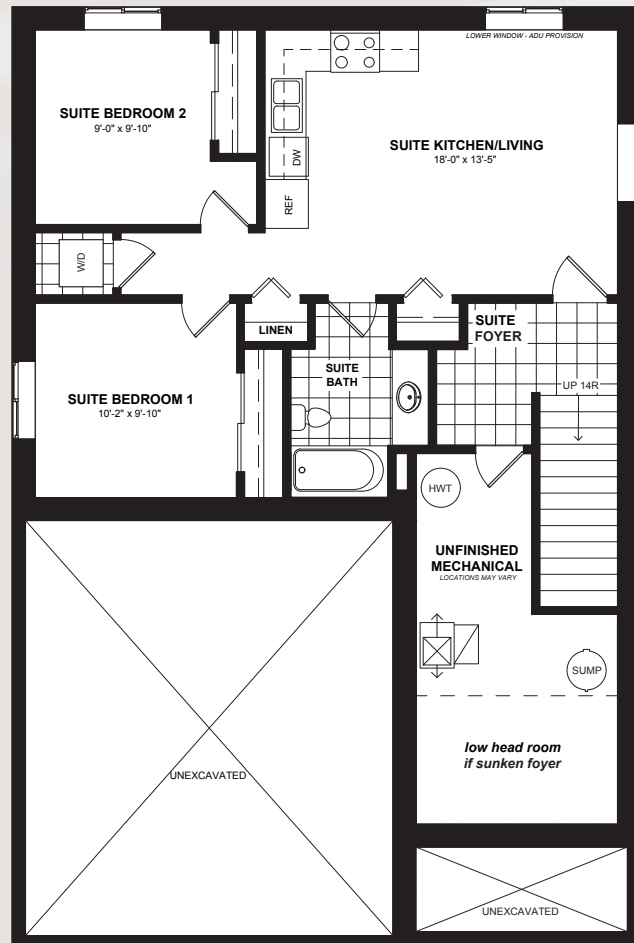

3.5 Bathrooms
(2.5+1)


3,467 Sq.Ft.
(2391+1076)

Actual usable floor space may vary from the stated floor area. Plans and elevations are artist's renderings and may contain options which are not standard on all models. Dunsire Homes Inc reserves the right to make changes to these floorplans, specifications, dimensions and elevations without prior notice and without compensation. Stated dimensions and square footages are approximate and should not be used as representation of the home's usable floor space or actual size. Any square footage of a single-family home or a multi-family home that is stated herein is approximate only, may vary from time to time, and remains subject to change without notice or compensation.

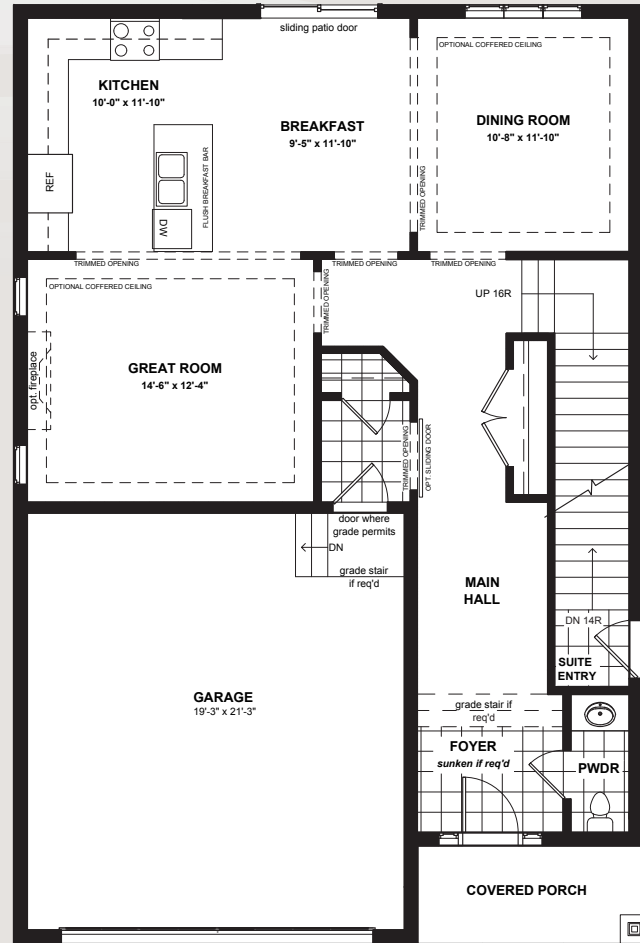


www.Dunsire.com



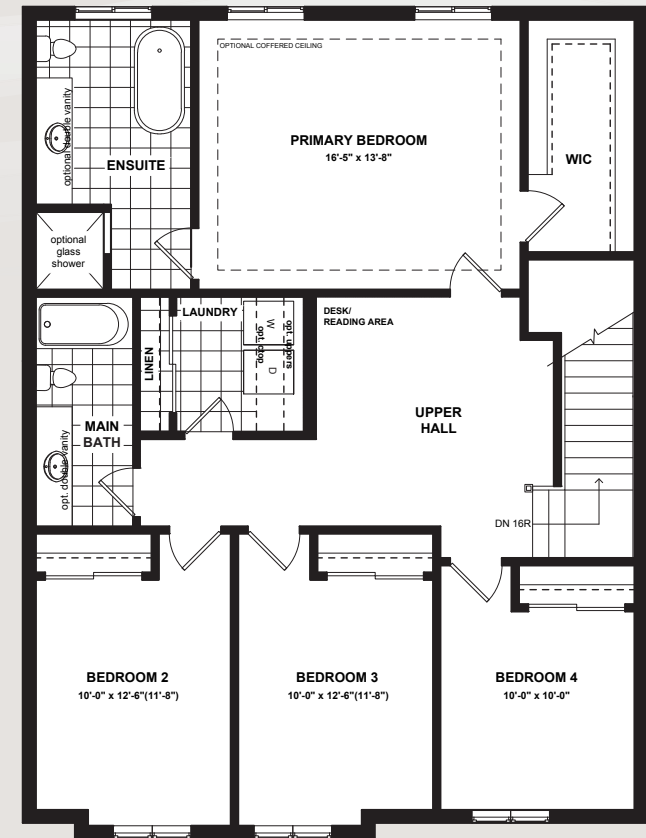
OPT. SECONDARY SUITE

1,076 SQ.FT



MAIN FLOOR

1,026 SQ.FT



SECOND FLOOR

1,365 SQ.FT



ASPEN

6 Bedrooms
(4+2)

3.5 Bathrooms
(2.5+1)

3,467 Sq.Ft.
(2391+1076)

Actual usable floor space may vary from the stated floor area. Plans and elevations are artist's renderings and may contain options which are not standard on all models. Dunsire Homes Inc reserves the right to make changes to these floorplans, specifications, dimensions and elevations without prior notice and without compensation. Stated dimensions and square footages are approximate and should not be used as representation of the home's usable floor space or actual size. Any square footage of a single-family home or a multi-family home that is stated herein is approximate only, may vary from time to time, and remains subject to change without notice or compensation.



www.Dunsire.com



MEADOW
HEIGHTS
PORT COLBORNE



ELEVATION C

Actual usable floor space may vary from the stated floor area. Plans and elevations are artist's renderings and may contain options which are not standard on all models. Dunsire Homes Inc reserves the right to make changes to these floorplans, specifications, dimensions and elevations without prior notice and without compensation. Stated dimensions and square footages are approximate and should not be used as representation of the home's usable floor space or actual size. Any square footage of a single-family home or a multi-family home that is stated herein is approximate only, may vary from time to time, and remains subject to change without notice or compensation

CEDAR



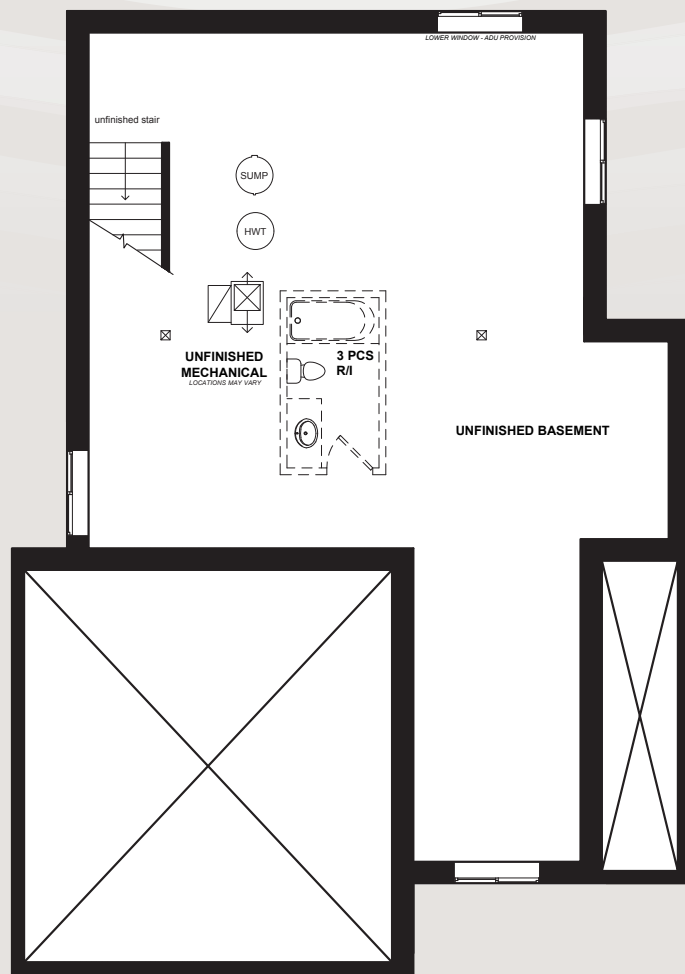
ELEVATION A



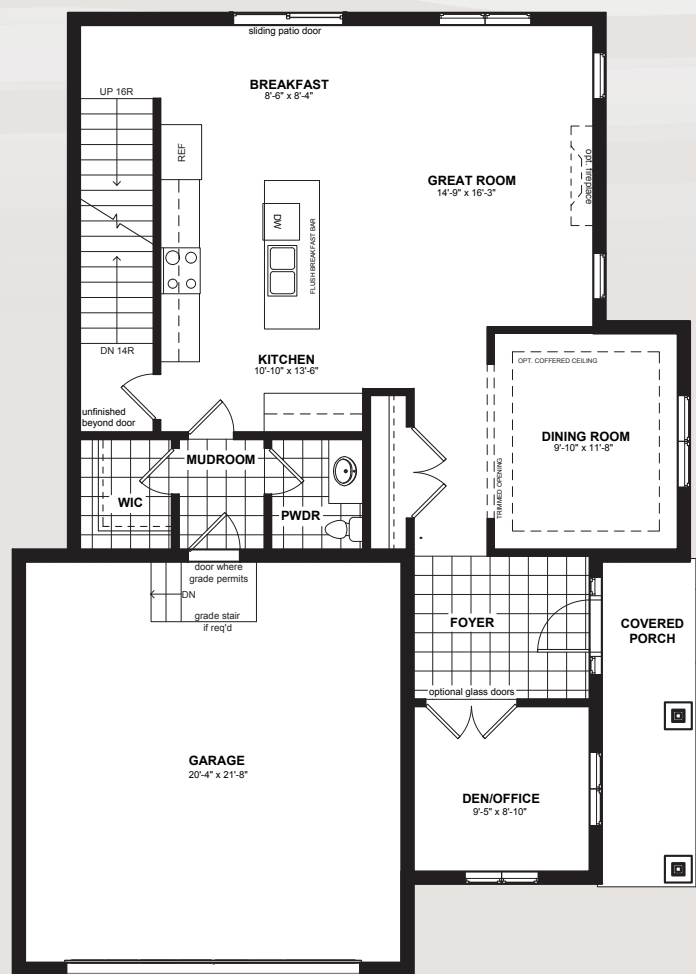
ELEVATION B

 **DUNSIRE** | EST. 2010
DEVELOPMENTS

www.Dunsire.com

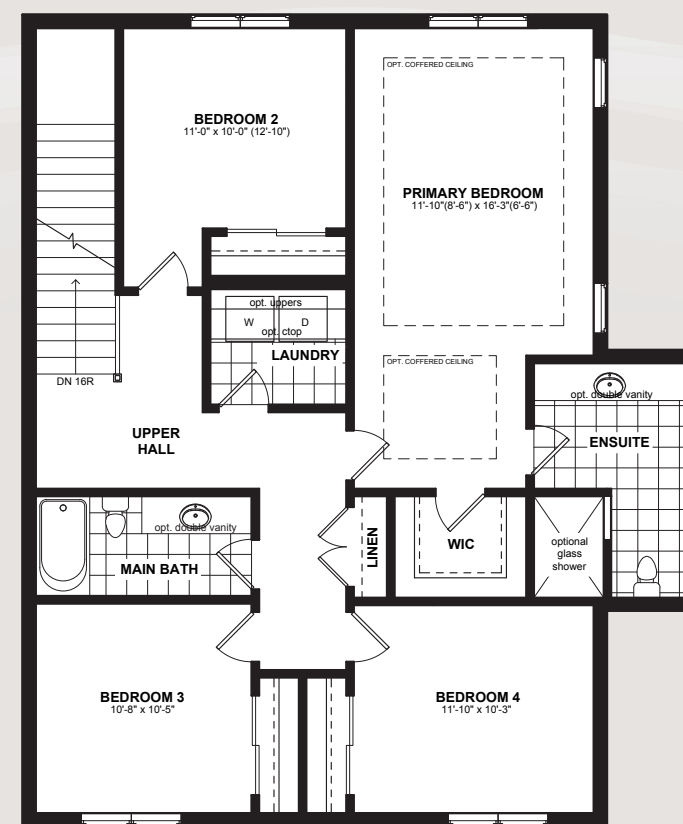


UNFINISHED BASEMENT



MAIN FLOOR

1,104 SQ.FT



SECOND FLOOR

1,251 SQ.FT

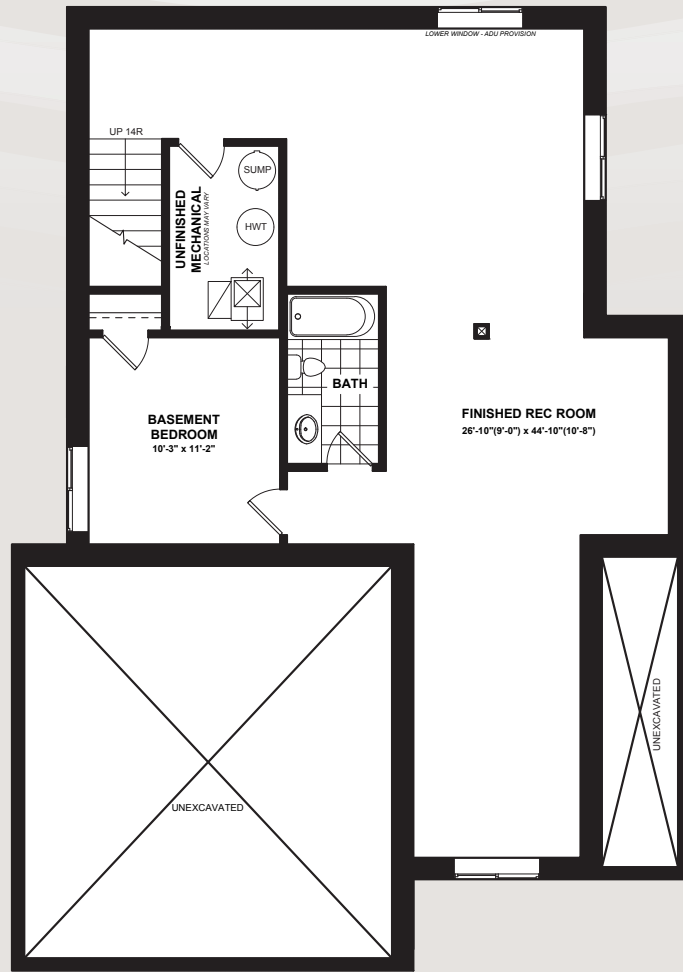


CEDAR



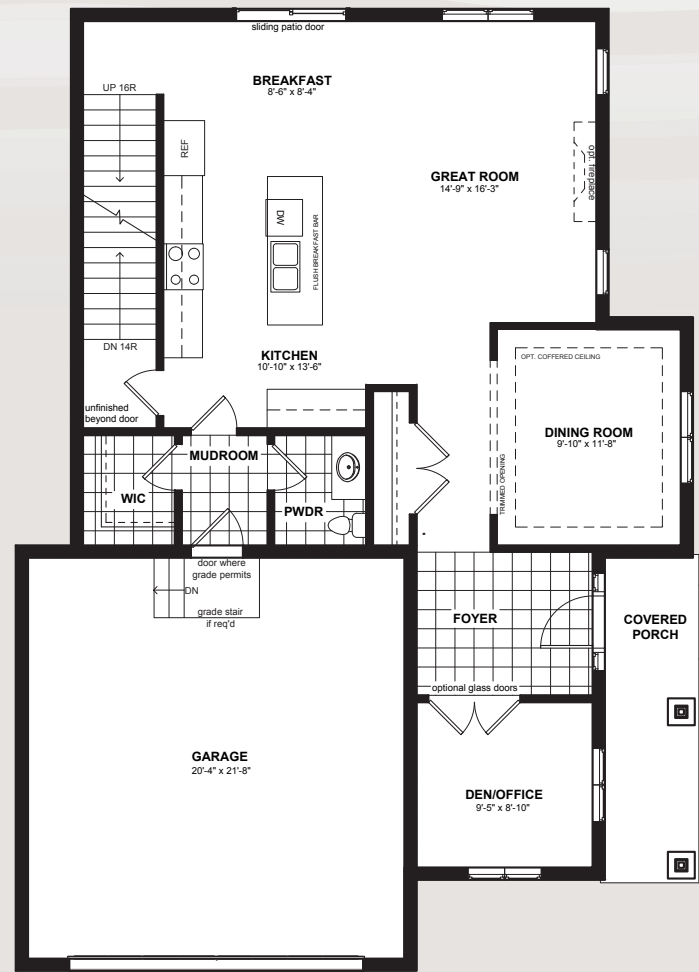
www.Dunsire.com

Actual usable floor space may vary from the stated floor area. Plans and elevations are artist's renderings and may contain options which are not standard on all models. Dunsire Homes Inc reserves the right to make changes to these floorplans, specifications, dimensions and elevations without prior notice and without compensation. Stated dimensions and square footages are approximate and should not be used as representation of the home's usable floor space or actual size. Any square footage of a single-family home or a multi-family home that is stated herein is approximate only, may vary from time to time, and remains subject to change without notice or compensation.



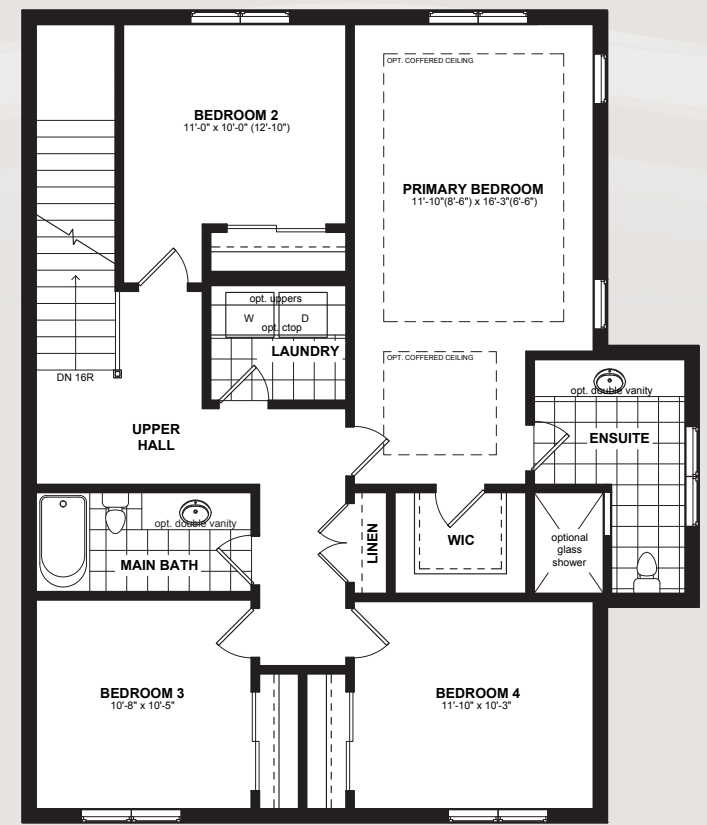
OPT. FINISHED BASEMENT

1,136 SQ.FT



MAIN FLOOR

1,104 SQ.FT



SECOND FLOOR

1,251 SQ.FT



CEDAR

5 Bedrooms
(4+1)

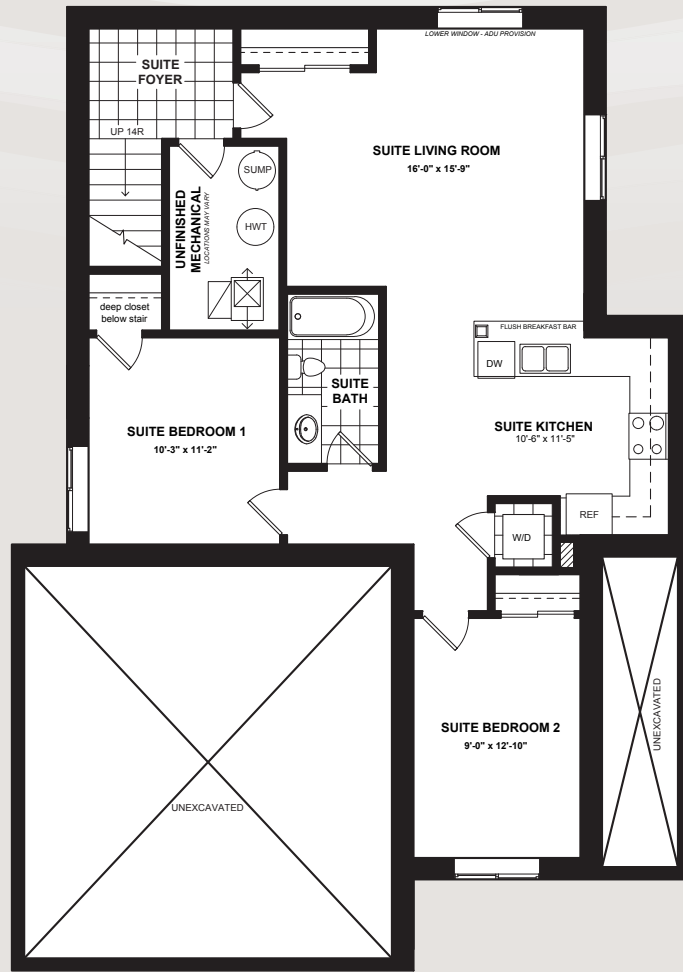
3.5 Bathrooms
(2.5+1)

3491 Sq.Ft.
(2,355+1,136)

Actual usable floor space may vary from the stated floor area. Plans and elevations are artist's renderings and may contain options which are not standard on all models. Dunsire Homes Inc reserves the right to make changes to these floorplans, specifications, dimensions and elevations without prior notice and without compensation. Stated dimensions and square footages are approximate and should not be used as representation of the home's usable floor space or actual size. Any square footage of a single-family home or a multi-family home that is stated herein is approximate only, may vary from time to time, and remains subject to change without notice or compensation.

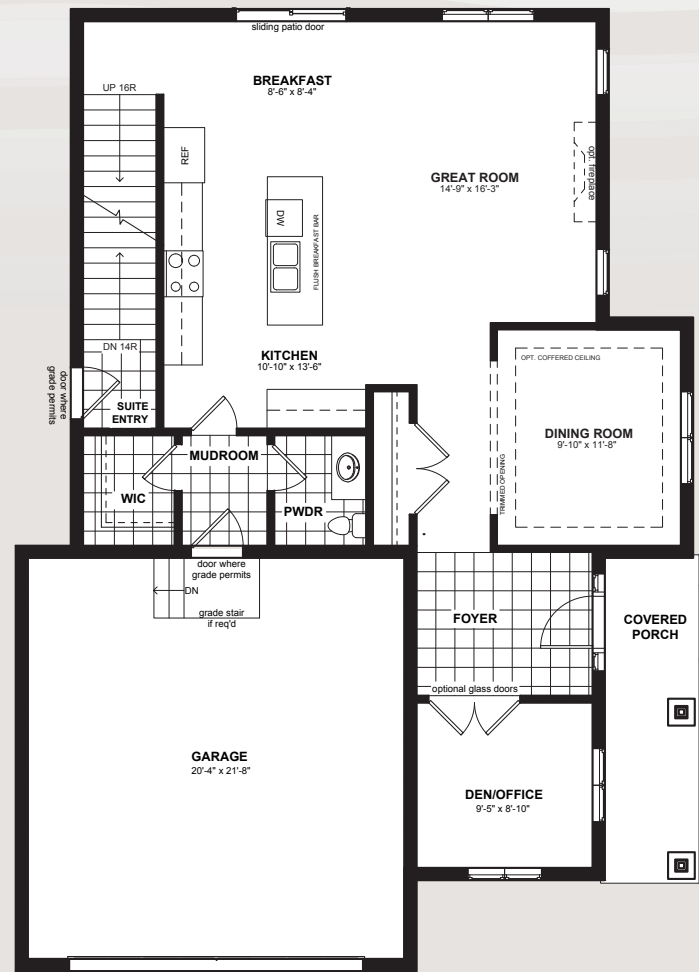


www.Dunsire.com



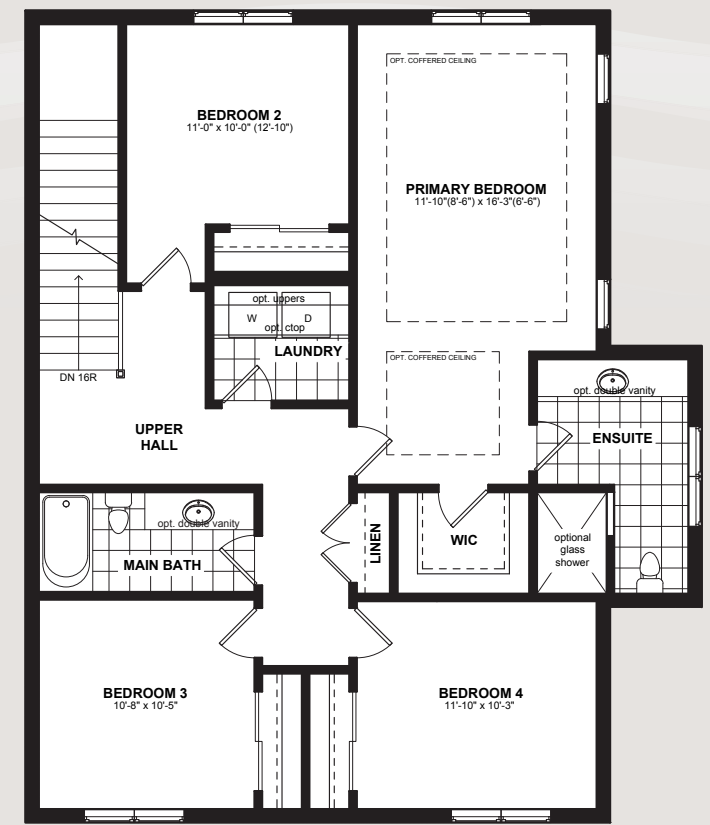
OPT. SECONDARY SUITE

1,136 SQ.FT



MAIN FLOOR

1,104 SQ.FT



SECOND FLOOR

1,251 SQ.FT



CEDAR

6 Bedrooms
(4+2)

3.5 Bathrooms
(2.5+1)

3491 Sq.Ft.
(2,355+1,136)

Actual usable floor space may vary from the stated floor area. Plans and elevations are artist's renderings and may contain options which are not standard on all models. Dunsire Homes Inc reserves the right to make changes to these floorplans, specifications, dimensions and elevations without prior notice and without compensation. Stated dimensions and square footages are approximate and should not be used as representation of the home's usable floor space or actual size. Any square footage of a single-family home or a multi-family home that is stated herein is approximate only, may vary from time to time, and remains subject to change without notice or compensation.



www.Dunsire.com



MEADOW
HEIGHTS
PORT COLBORNE

HAWTHORN



ELEVATION C



ELEVATION A

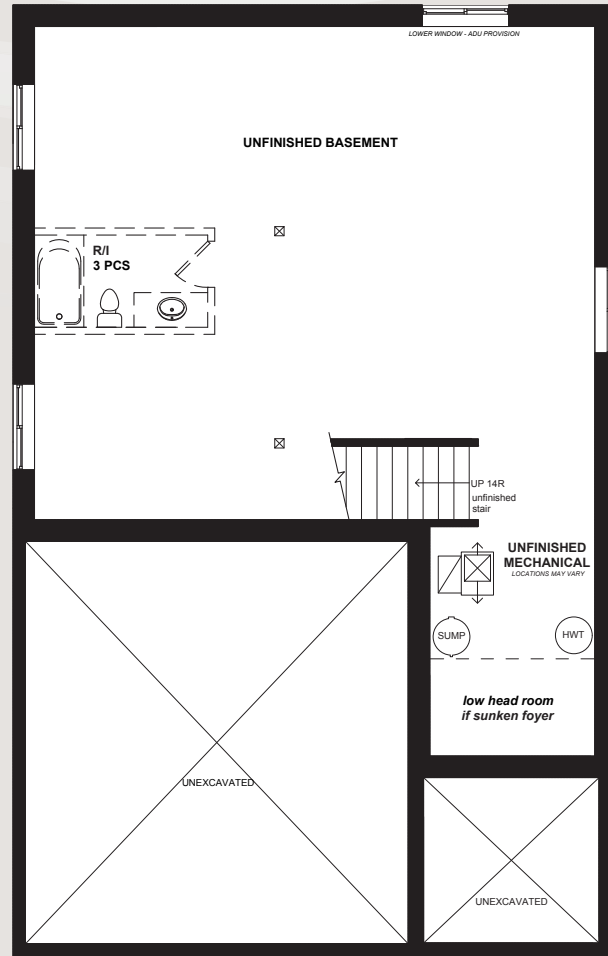


ELEVATION B

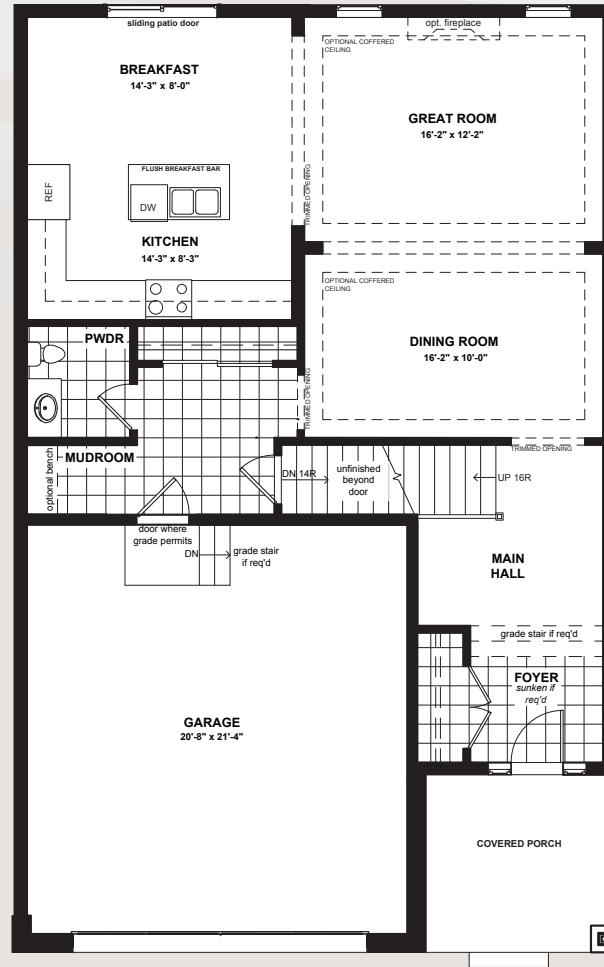
Actual usable floor space may vary from the stated floor area. Plans and elevations are artist's renderings and may contain options which are not standard on all models. Dunsire Homes Inc reserves the right to make changes to these floorplans, specifications, dimensions and elevations without prior notice and without compensation. Stated dimensions and square footages are approximate and should not be used as representation of the home's usable floor space or actual size. Any square footage of a single-family home or a multi-family home that is stated herein is approximate only, may vary from time to time, and remains subject to change without notice or compensation.

 **DUNSIRE** | EST. 2010
DEVELOPMENTS

www.Dunsire.com

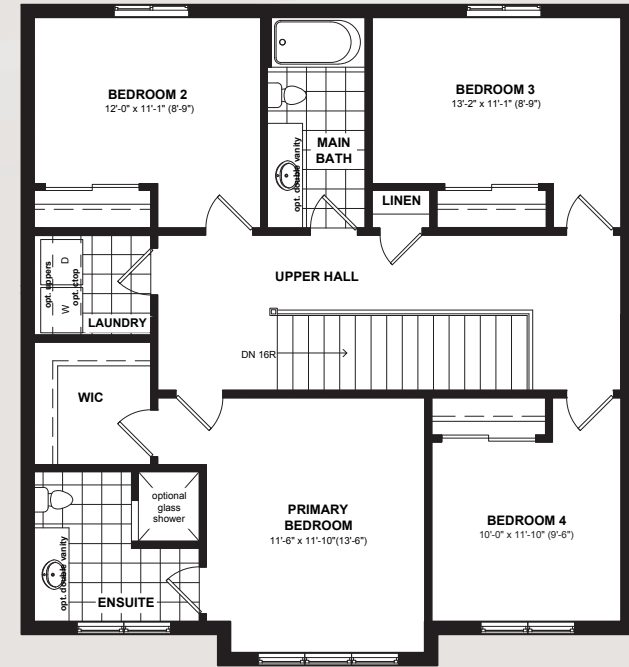


UNFINISHED BASEMENT



MAIN FLOOR

1,015 SQ.FT



SECOND FLOOR

1,116 SQ.FT



HAWTHORN

 4 Bedrooms

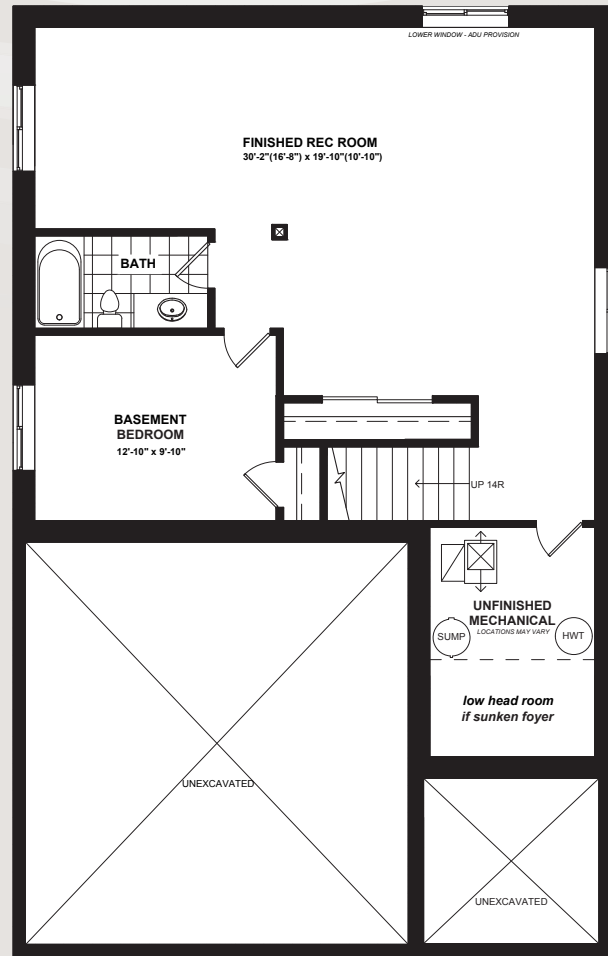
 2.5 Bathrooms

 2,131 Sq.Ft.

Actual usable floor space may vary from the stated floor area. Plans and elevations are artist's renderings and may contain options which are not standard on all models. Dunsire Homes Inc reserves the right to make changes to these floorplans, specifications, dimensions and elevations without prior notice and without compensation. Stated dimensions and square footages are approximate and should not be used as representation of the home's usable floor space or actual size. Any square footage of a single-family home or a multi-family home that is stated herein is approximate only, may vary from time to time, and remains subject to change without notice or compensation.

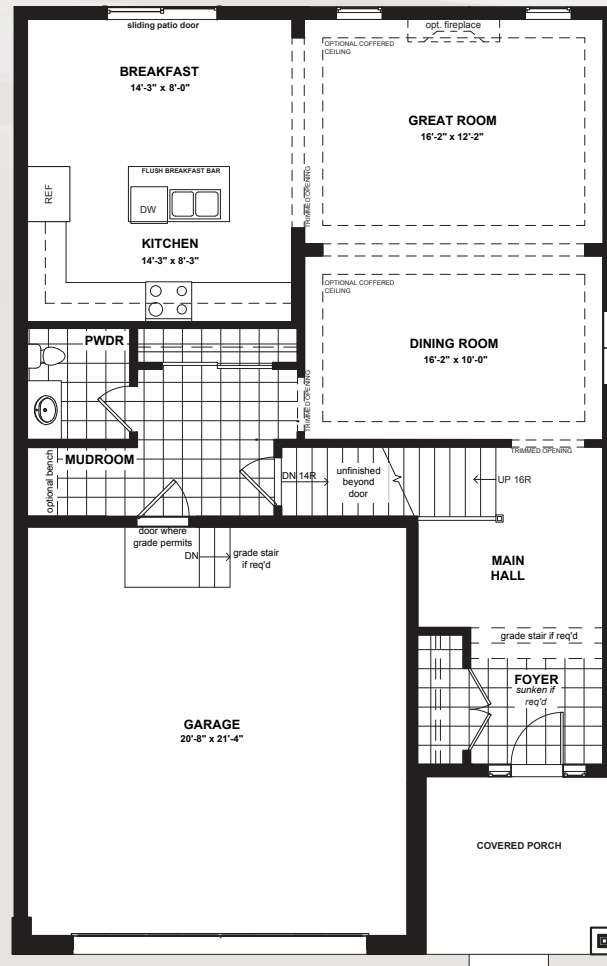


www.Dunsire.com



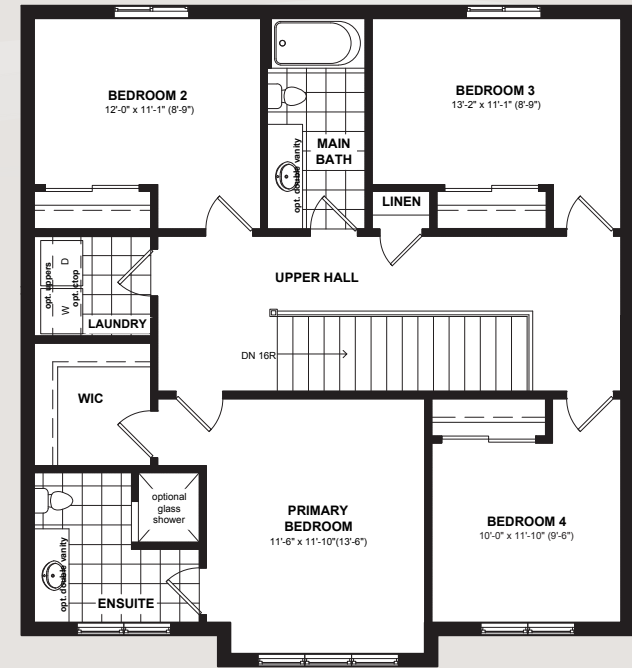
OPT. FINISHED BASEMENT

1,154 SQ.FT



MAIN FLOOR

1,015 SQ.FT



SECOND FLOOR


1,116 SQ.FT



HAWTHORN


5 Bedrooms
(4+1)

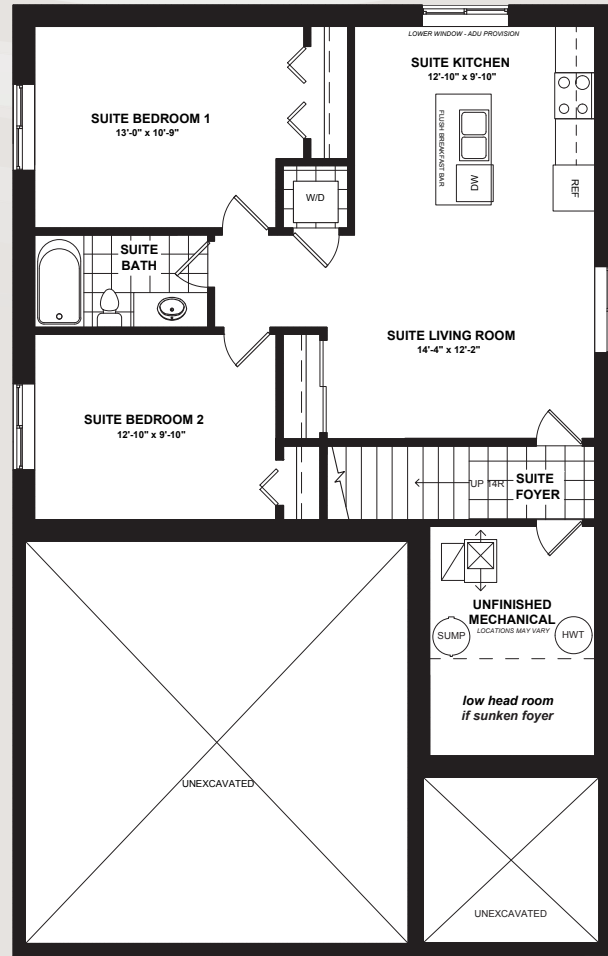

3.5 Bathrooms
(2.5+1)


3,285 Sq.Ft.
(2,131+1,154)

Actual usable floor space may vary from the stated floor area. Plans and elevations are artist's renderings and may contain options which are not standard on all models. Dunsire Homes Inc reserves the right to make changes to these floorplans, specifications, dimensions and elevations without prior notice and without compensation. Stated dimensions and square footages are approximate and should not be used as representation of the home's usable floor space or actual size. Any square footage of a single-family home or a multi-family home that is stated herein is approximate only, may vary from time to time, and remains subject to change without notice or compensation.

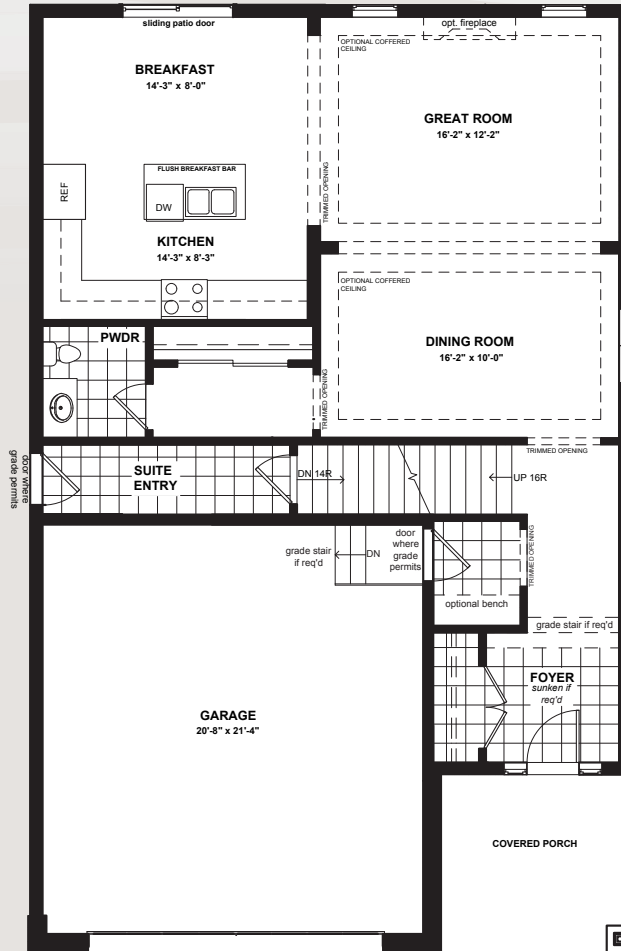


www.Dunsire.com



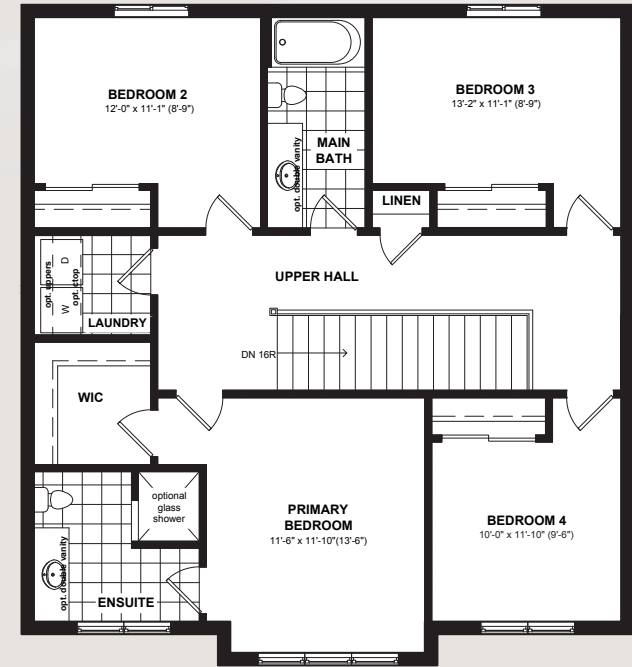
OPT. SECONDARY SUITE

1,154 SQ.FT



MAIN FLOOR

1,015 SQ.FT



SECOND FLOOR


1,116 SQ.FT



HAWTHORN


6 Bedrooms
(4+2)


3.5 Bathrooms
(2.5+1)


3,285 Sq.Ft.
(2,131+1,154)

Actual usable floor space may vary from the stated floor area. Plans and elevations are artist's renderings and may contain options which are not standard on all models. Dunsire Homes Inc reserves the right to make changes to these floorplans, specifications, dimensions and elevations without prior notice and without compensation. Stated dimensions and square footages are approximate and should not be used as representation of the home's usable floor space or actual size. Any square footage of a single-family home or a multi-family home that is stated herein is approximate only, may vary from time to time, and remains subject to change without notice or compensation.



www.Dunsire.com



MEADOW
HEIGHTS
PORT COLBORNE

PRIMROSE



ELEVATION A



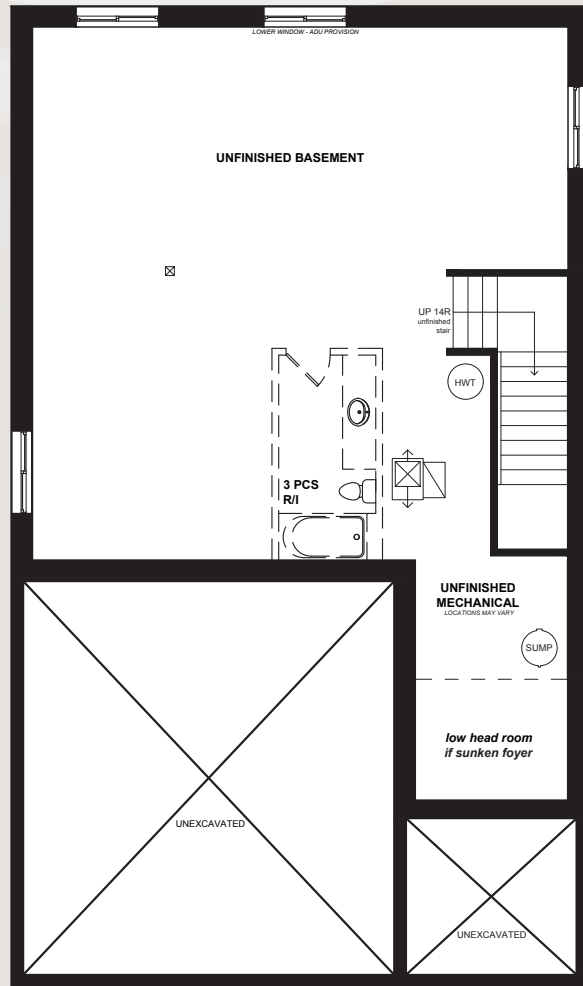
ELEVATION B

ELEVATION C

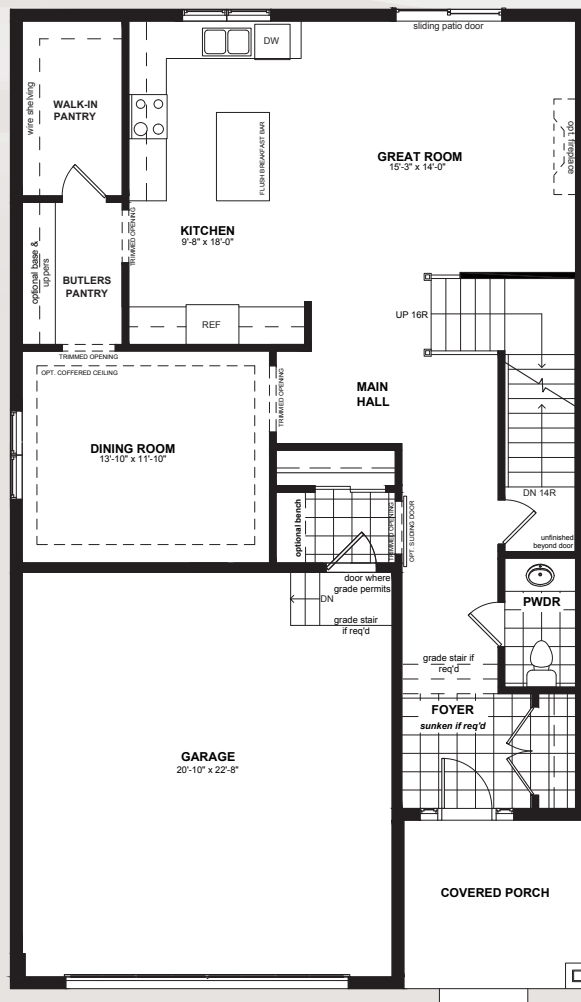
Actual usable floor space may vary from the stated floor area. Plans and elevations are artist's renderings and may contain options which are not standard on all models. Dunsire Homes Inc reserves the right to make changes to these floorplans, specifications, dimensions and elevations without prior notice and without compensation. Stated dimensions and square footages are approximate and should not be used as representation of the home's usable floor space or actual size. Any square footage of a single-family home or a multi-family home that is stated herein is approximate only, may vary from time to time, and remains subject to change without notice or compensation.

 **DUNSIRE** | EST. 2010
DEVELOPMENTS

www.Dunsire.com

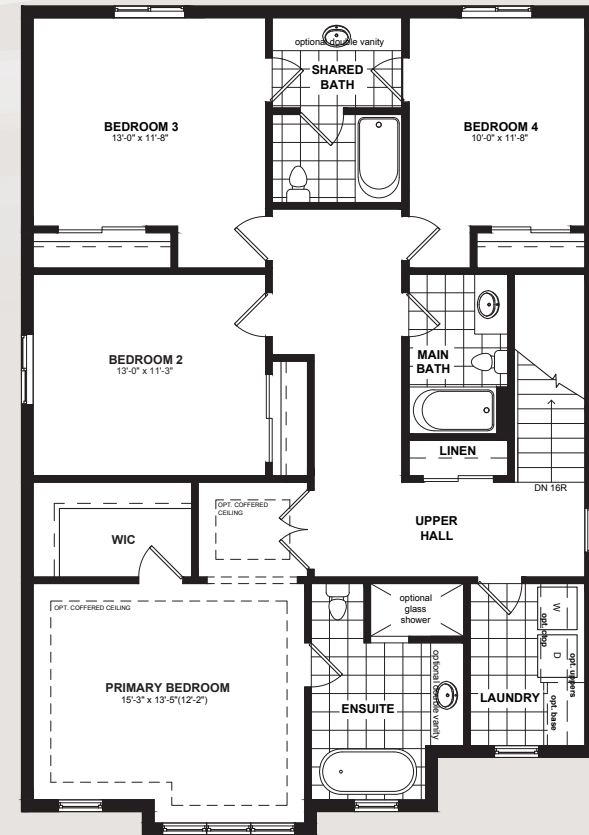


UNFINISHED BASEMENT



MAIN FLOOR

1,180 SQ.FT



SECOND FLOOR

1,480 SQ.FT



PRIMROSE

 4 Bedrooms

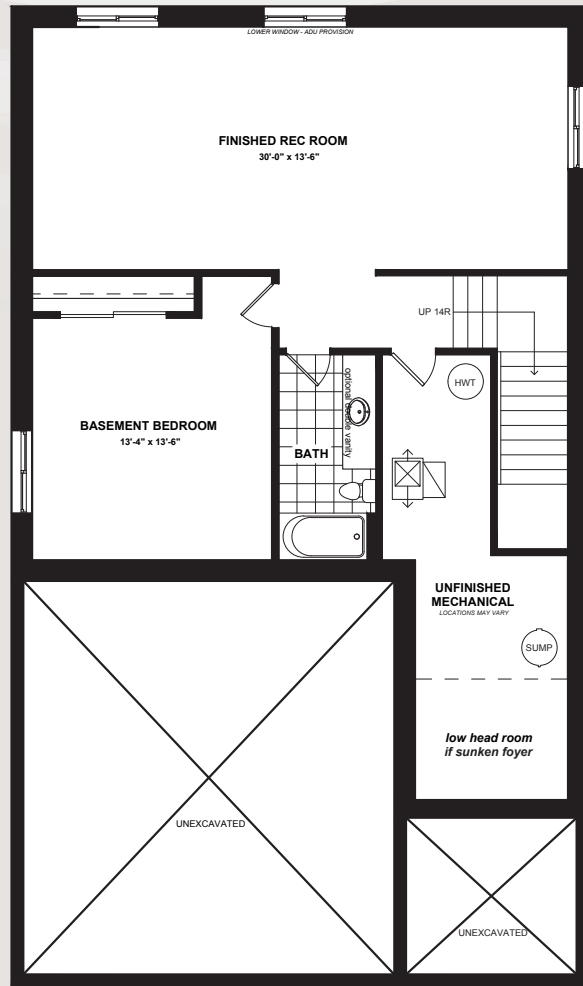
 3.5 Bathrooms

 2,660 Sq.Ft.

Actual usable floor space may vary from the stated floor area. Plans and elevations are artist's renderings and may contain options which are not standard on all models. Dunsire Homes Inc reserves the right to make changes to these floorplans, specifications, dimensions and elevations without prior notice and without compensation. Stated dimensions and square footages are approximate and should not be used as representation of the home's usable floor space or actual size. Any square footage of a single-family home or a multi-family home that is stated herein is approximate only, may vary from time to time, and remains subject to change without notice or compensation.

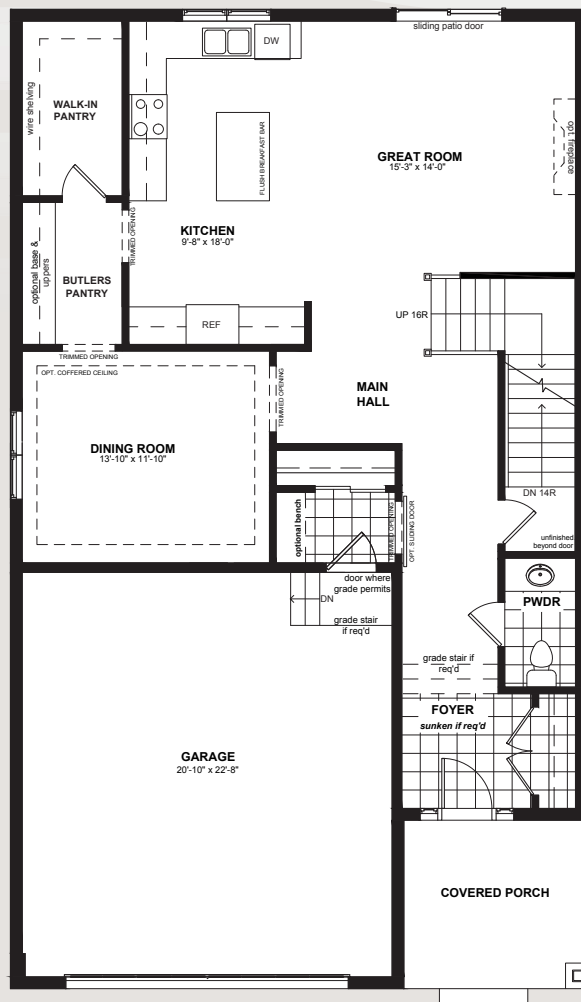


www.Dunsire.com



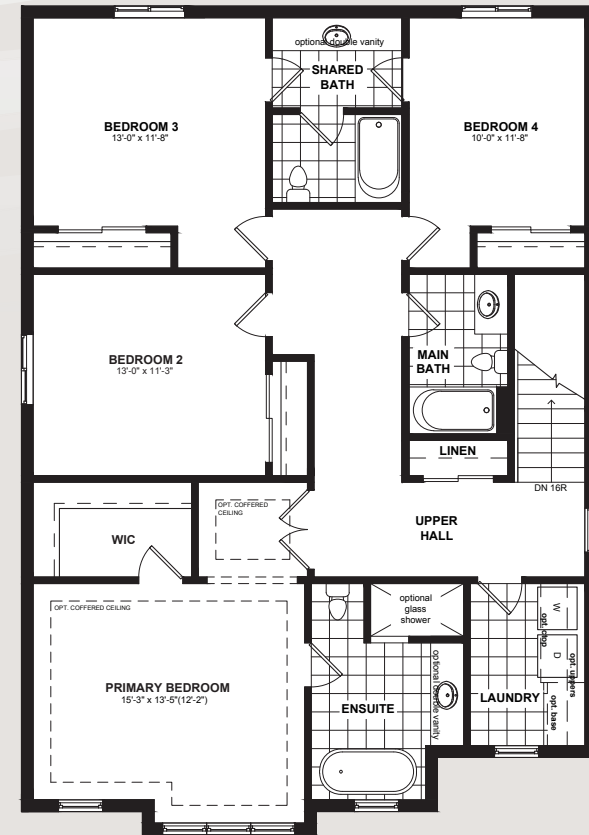
OPT. FINISHED BASEMENT

1,228 SQ.FT



MAIN FLOOR

1,180 SQ.FT



SECOND FLOOR

1,480 SQ.FT



PRIMROSE


5 Bedrooms
(4+1)

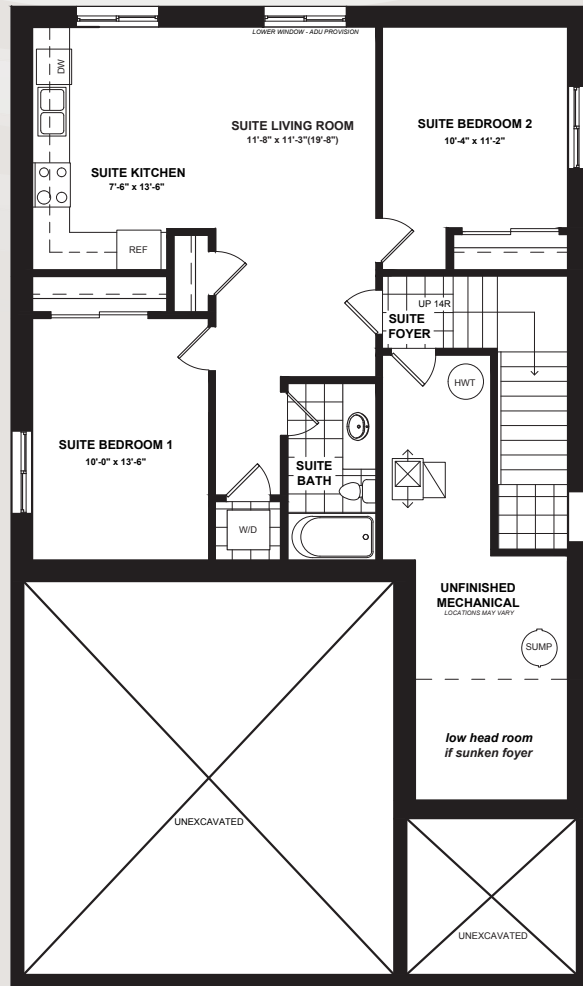

4.5 Bathrooms
(3.5+1)


3,888 Sq.Ft.
(2,660+1,228)

Actual usable floor space may vary from the stated floor area. Plans and elevations are artist's renderings and may contain options which are not standard on all models. Dunsire Homes Inc reserves the right to make changes to these floorplans, specifications, dimensions and elevations without prior notice and without compensation. Stated dimensions and square footages are approximate and should not be used as representation of the home's usable floor space or actual size. Any square footage of a single-family home or a multi-family home that is stated herein is approximate only, may vary from time to time, and remains subject to change without notice or compensation.

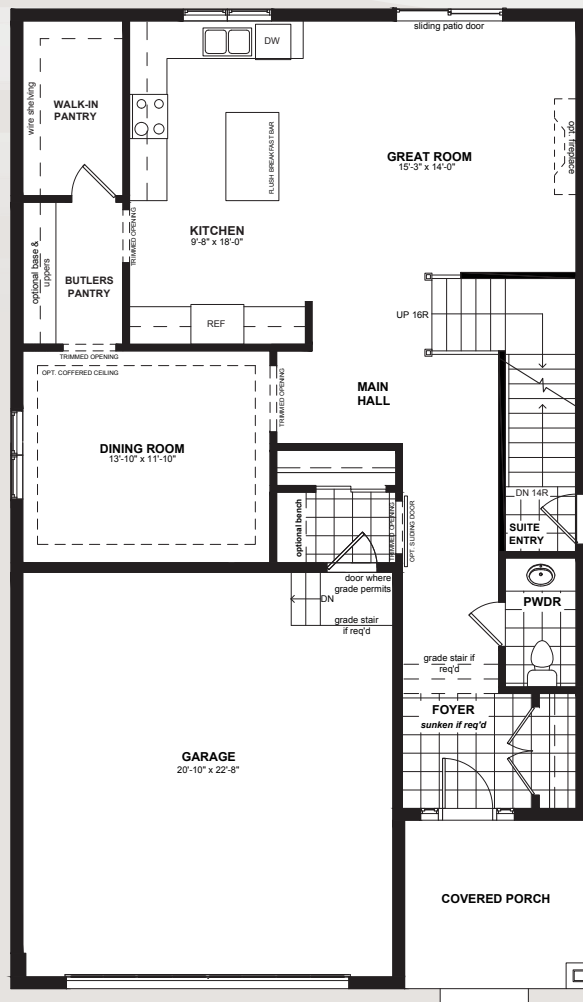


www.Dunsire.com



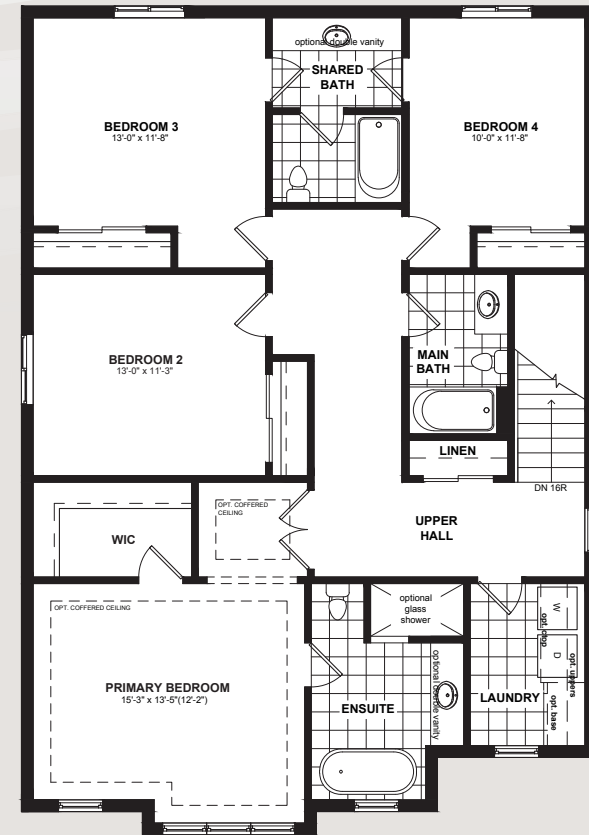
OPT. SECONDARY SUITE

1,228 SQ.FT



MAIN FLOOR

1,180 SQ.FT



SECOND FLOOR

1,480 SQ.FT



PRIMROSE

 6 Bedrooms
(4+2)

 4.5 Bathrooms
(3.5+1)

 3,888 Sq.Ft.
(2,660+1,228)

Actual usable floor space may vary from the stated floor area. Plans and elevations are artist's renderings and may contain options which are not standard on all models. Dunsire Homes Inc reserves the right to make changes to these floorplans, specifications, dimensions and elevations without prior notice and without compensation. Stated dimensions and square footages are approximate and should not be used as representation of the home's usable floor space or actual size. Any square footage of a single-family home or a multi-family home that is stated herein is approximate only, may vary from time to time, and remains subject to change without notice or compensation.



www.Dunsire.com