

# MILA

## TOWNHOMES

### CITY SERIES

- RIDGEWOOD**  
2205 SQ.FT.
- PINEWOOD**  
2202 SQ.FT.
- NORWOOD**  
2212 SQ.FT.
- ASHWOOD**  
2163 SQ.FT.

### STREET SERIES

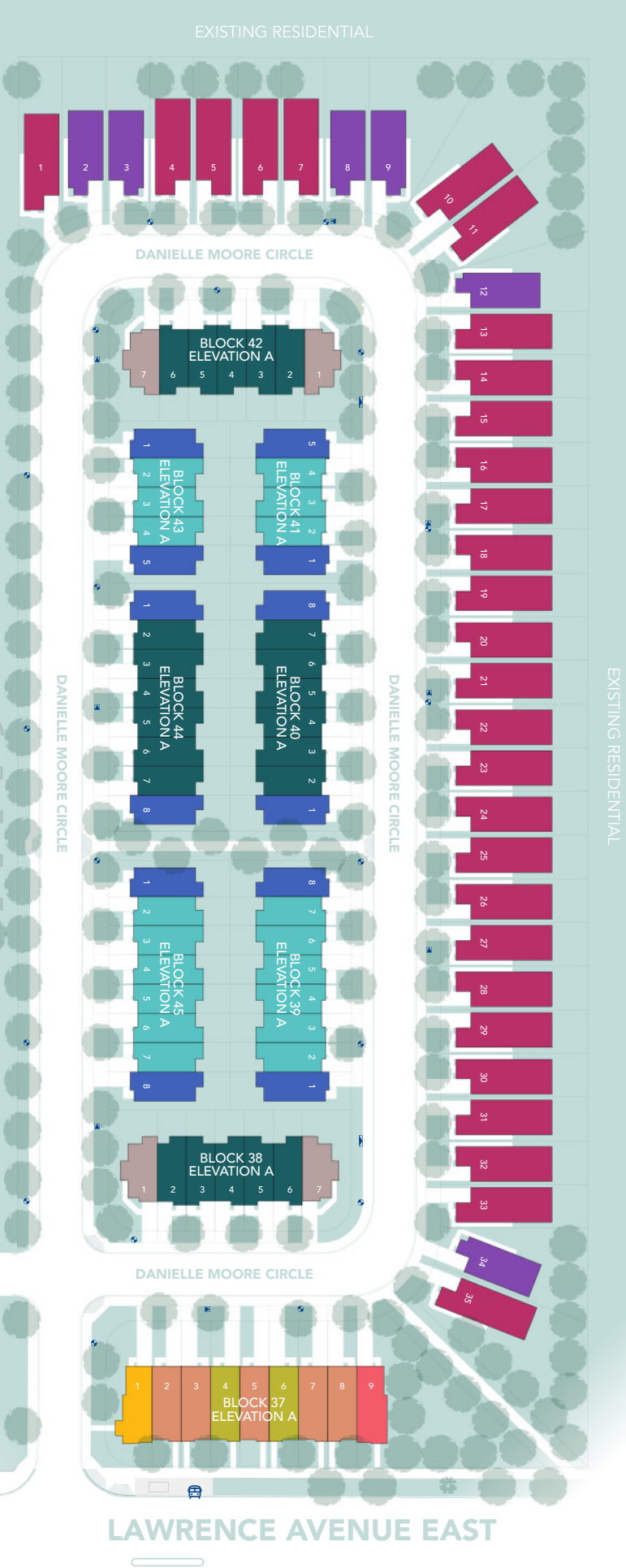
- BEAUMONT**  
1917 SQ.FT.
- BELLMONT**  
1958 SQ.FT.
- RICHMONT**  
1971 SQ.FT.
- VELMONT**  
2023 SQ.FT.

## DETACHED

- BROOK VILLA**  
2036 SQ.FT.
- GLEN VILLA**  
2413 SQ.FT.
- GLEN VILLA II**  
LOTS: 1, 4-7, 10-11, 13-21, 30-33, 35

### UTILITIES

- TRANSFORMER
- STREET LIGHT
- MAILBOX
- BUS STOP



# MILA

BY MADISON

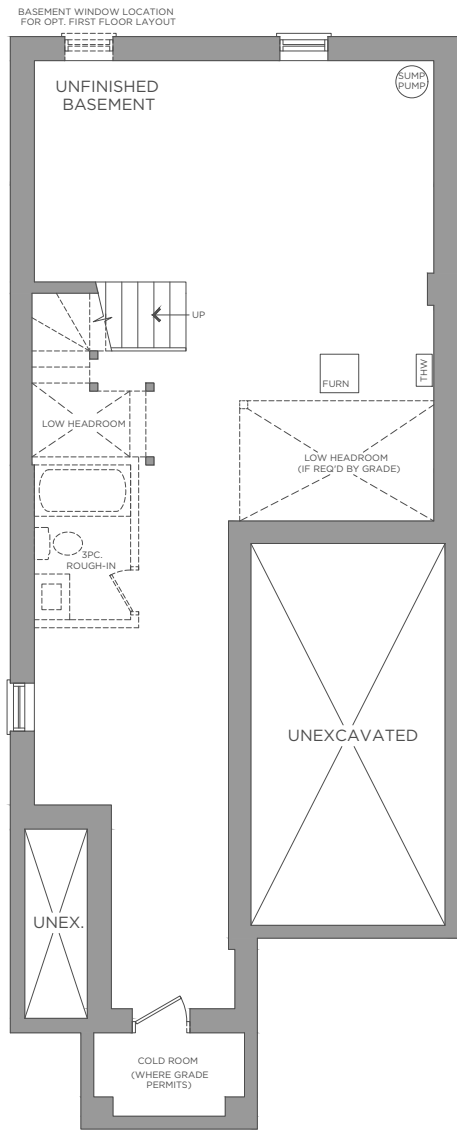


## SINGLE DETACHED BROOK VILLA

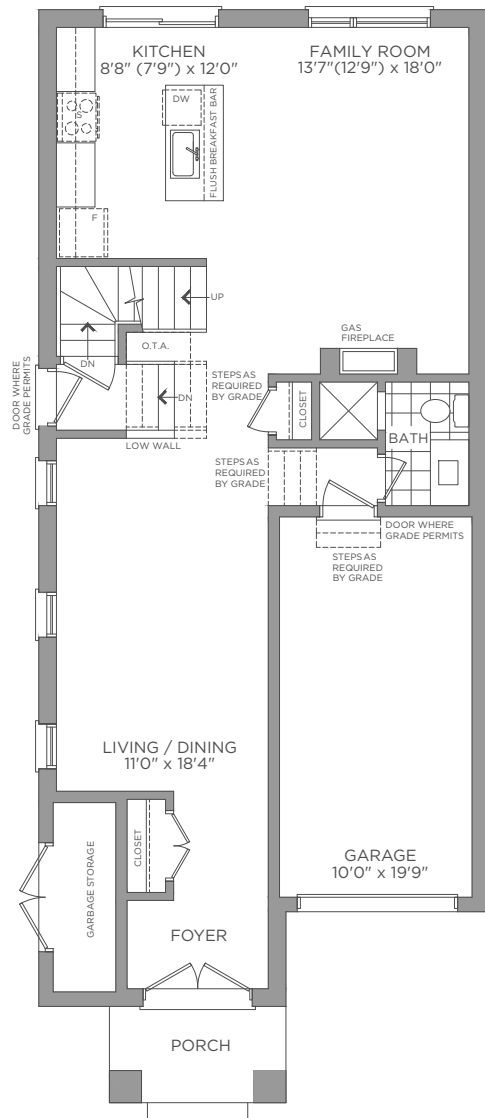
2,036 SQ.FT.

4 3 1

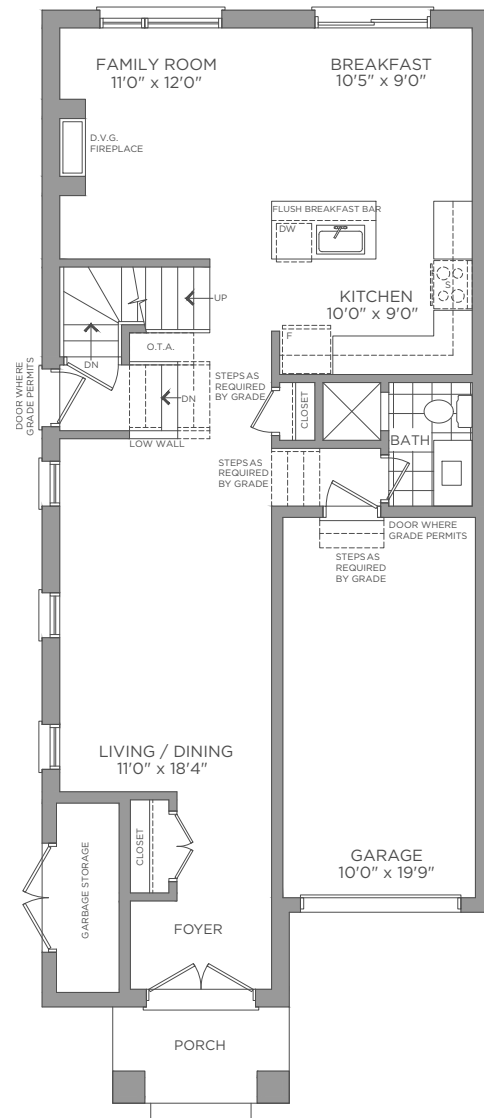
Site plan is not to scale and is artist's concept only. Site plan is subject to approval by applicable authorities and the purchaser agrees to accept any changes. Dimensions, sizes, road patterns, park and landscaping are proposed and approximate and may vary from finished community. All details are subject to change without notice. E. & O.E., March 2023



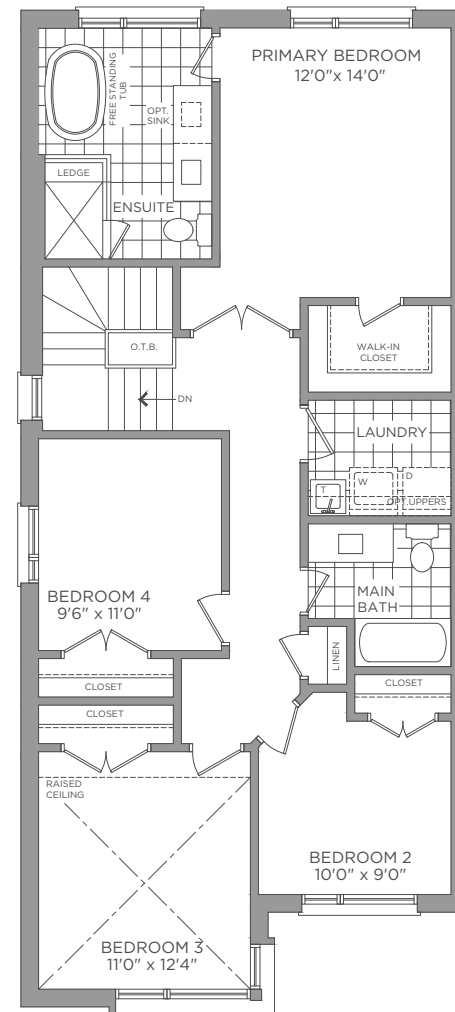
BASEMENT  
ELEVATION A, B & C



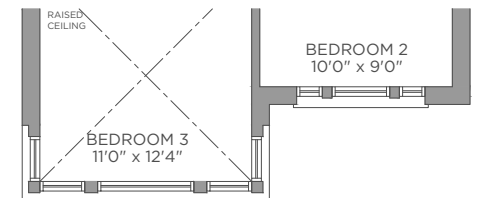
FIRST FLOOR  
ELEVATION A, B & C



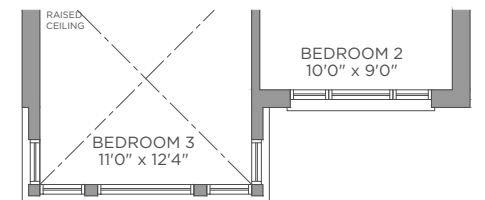
OPT. FIRST FLOOR  
ELEVATION A, B & C



SECOND FLOOR  
ELEVATION A



SECOND FLOOR  
ELEVATION B



SECOND FLOOR  
ELEVATION C

**MADISON**  
GROUP

Dimensions, materials, specifications, structural elements and floorplans are subject to change without notice. Actual usable floor space may vary from the stated floor area. Layout shown may be the reverse of the unit purchased. Exterior elevation and site plan are subject to approval by applicable authorities and the purchaser agrees to accept any change. The size and location of window, mullions, exterior doors, furnaces, HVAC Units, patios and/or balconies are subject to change and may vary depending on unit location within the project. All illustrations are artist's concept only. E. & O. E., March 2023

SINGLE DETACHED  
**BROOK VILLA**

2,036 SQ.FT.



# MILA

## TOWNHOMES

### CITY SERIES

- RIDGEWOOD**  
2205 SQ.FT.
- PINEWOOD**  
2202 SQ.FT.
- NORWOOD**  
2212 SQ.FT.
- ASHWOOD**  
2163 SQ.FT.

### STREET SERIES

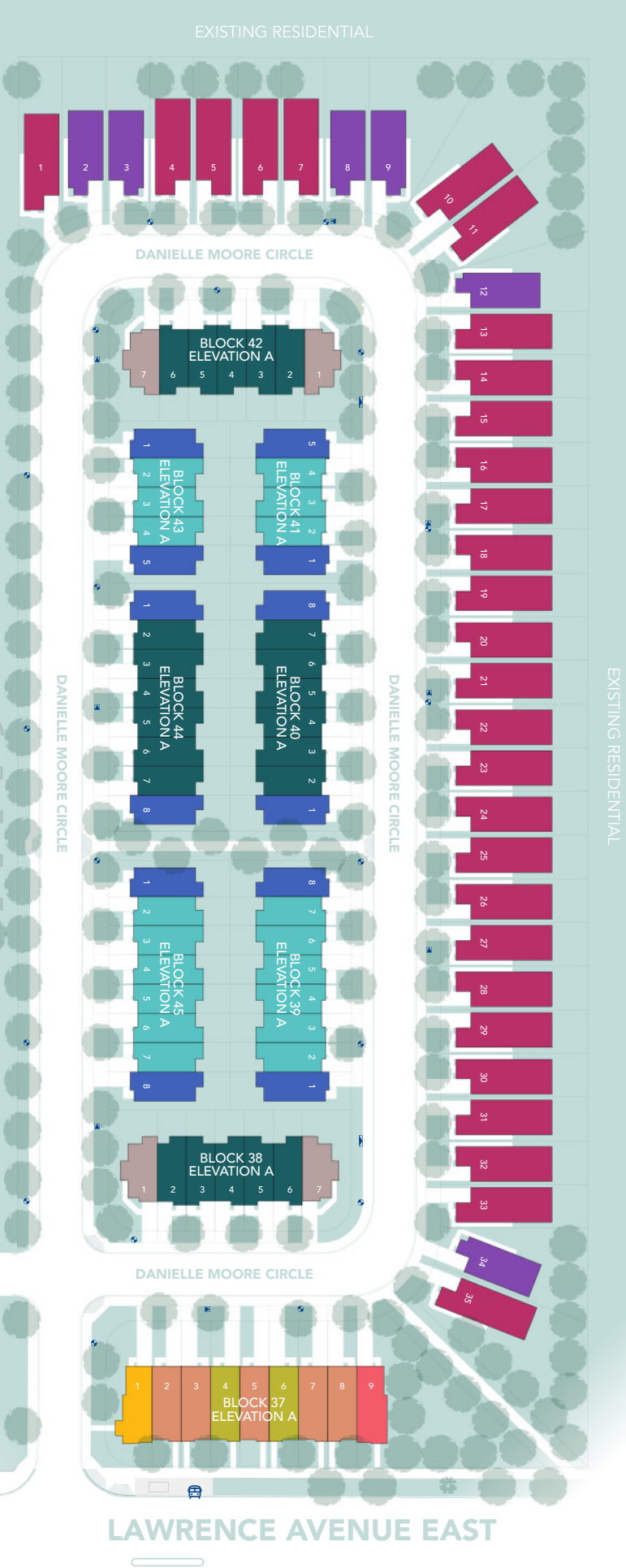
- BEAUMONT**  
1917 SQ.FT.
- BELLMONT**  
1958 SQ.FT.
- RICHMONT**  
1971 SQ.FT.
- VELMONT**  
2023 SQ.FT.

## DETACHED

- BROOK VILLA**  
2036 SQ.FT.
- GLEN VILLA**  
2413 SQ.FT.
- GLEN VILLA II**  
LOTS: 1, 4-7, 10-11, 13-21, 30-33, 35

### UTILITIES

- TRANSFORMER
- STREET LIGHT
- MAILBOX
- BUS STOP



# MILA

BY MADISON

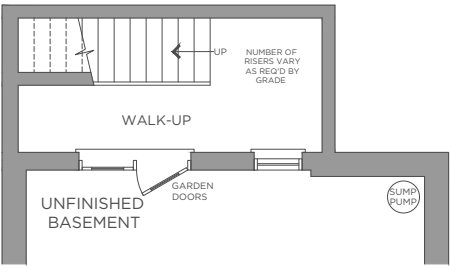


## SINGLE DETACHED GLEN VILLA

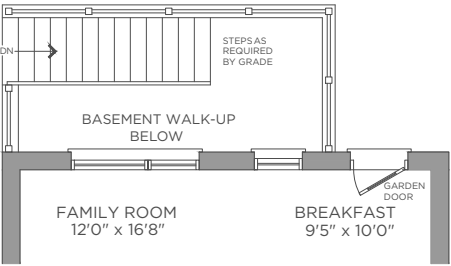
2,413 SQ.FT.

4 3.5 1

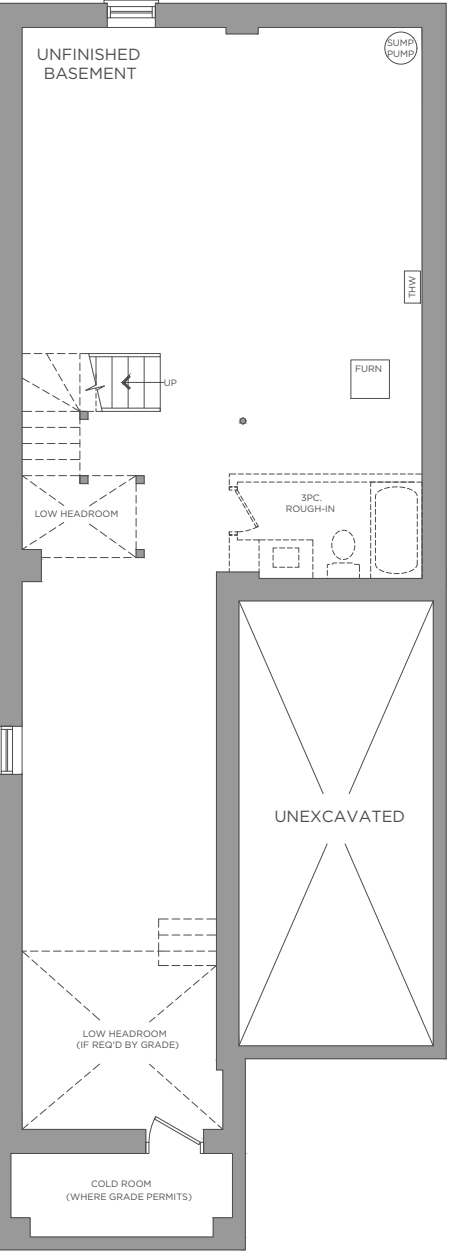
Site plan is not to scale and is artist's concept only. Site plan is subject to approval by applicable authorities and the purchaser agrees to accept any changes. Dimensions, sizes, road patterns, park and landscaping are proposed and approximate and may vary from finished community. All details are subject to change without notice. E. & O.E., March 2023



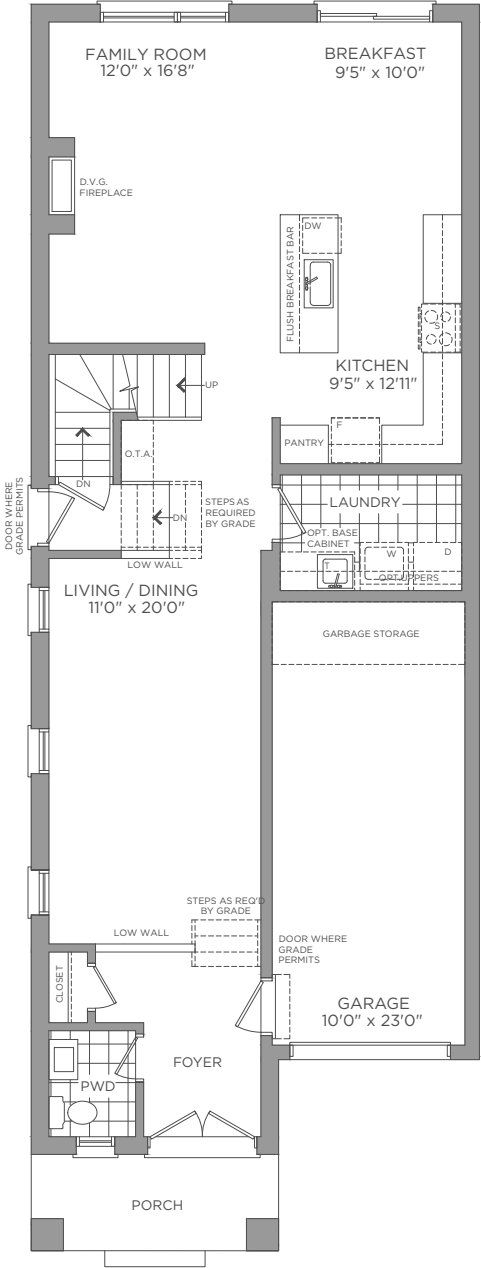
BASEMENT W/OPT. WALK-UP  
ELEVATION A, B, C & D



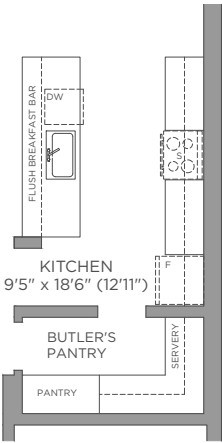
FIRST FLOOR W/OPT. WALK-UP  
ELEVATION A, B, C & D



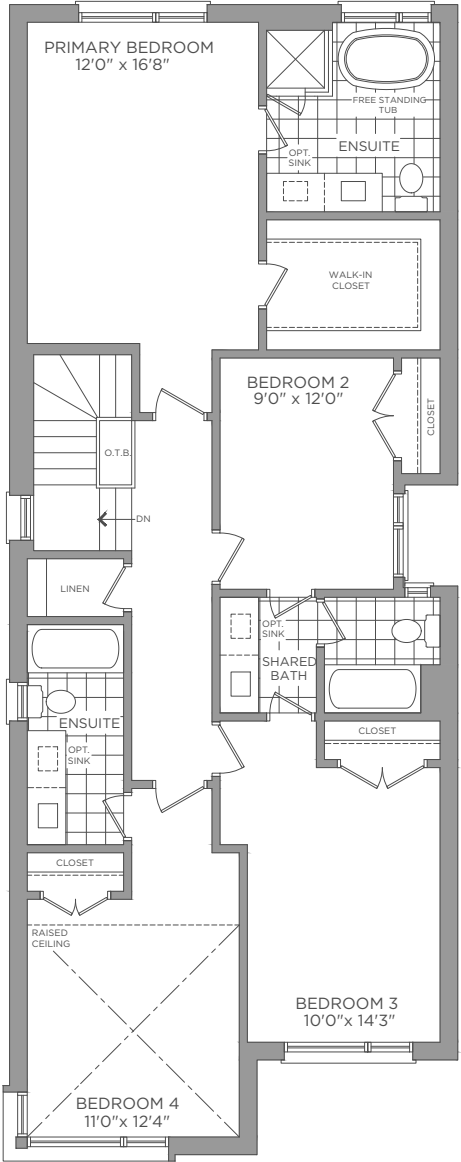
BASEMENT  
ELEVATION A, B, C & D



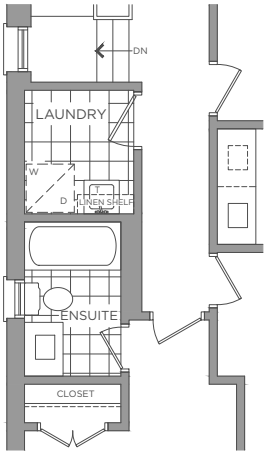
FIRST FLOOR  
ELEVATION A, B, C & D



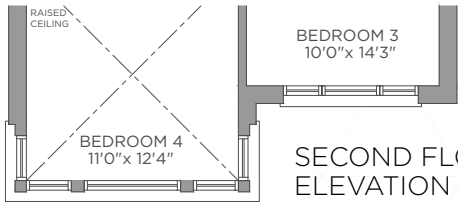
OPT. FIRST FLOOR  
IF LAUNDRY ON 2<sup>ND</sup> FLOOR



SECOND FLOOR  
ELEVATION A, B & D



OPT. SECOND FLOOR  
WITH LAUNDRY



SECOND FLOOR  
ELEVATION C

**MADISON**  
GROUP

Dimensions, materials, specifications, structural elements and floorplans are subject to change without notice. Actual usable floor space may vary from the stated floor area. Layout shown may be the reverse of the unit purchased. Exterior elevation and site plan are subject to approval by applicable authorities and the purchaser agrees to accept any change. The size and location of window, mullions, exterior doors, furnaces, HVAC Units, patios and/or balconies are subject to change and may vary depending on unit location within the project. All illustrations are artist's concept only. E. & O. E., March 2023

SINGLE DETACHED  
**GLEN VILLA**

2,413 SQ.FT.



# MILA

## TOWNHOMES

### CITY SERIES

- RIDGEWOOD**  
2205 SQ.FT.
- PINEWOOD**  
2202 SQ.FT.
- NORWOOD**  
2212 SQ.FT.
- ASHWOOD**  
2163 SQ.FT.

### STREET SERIES

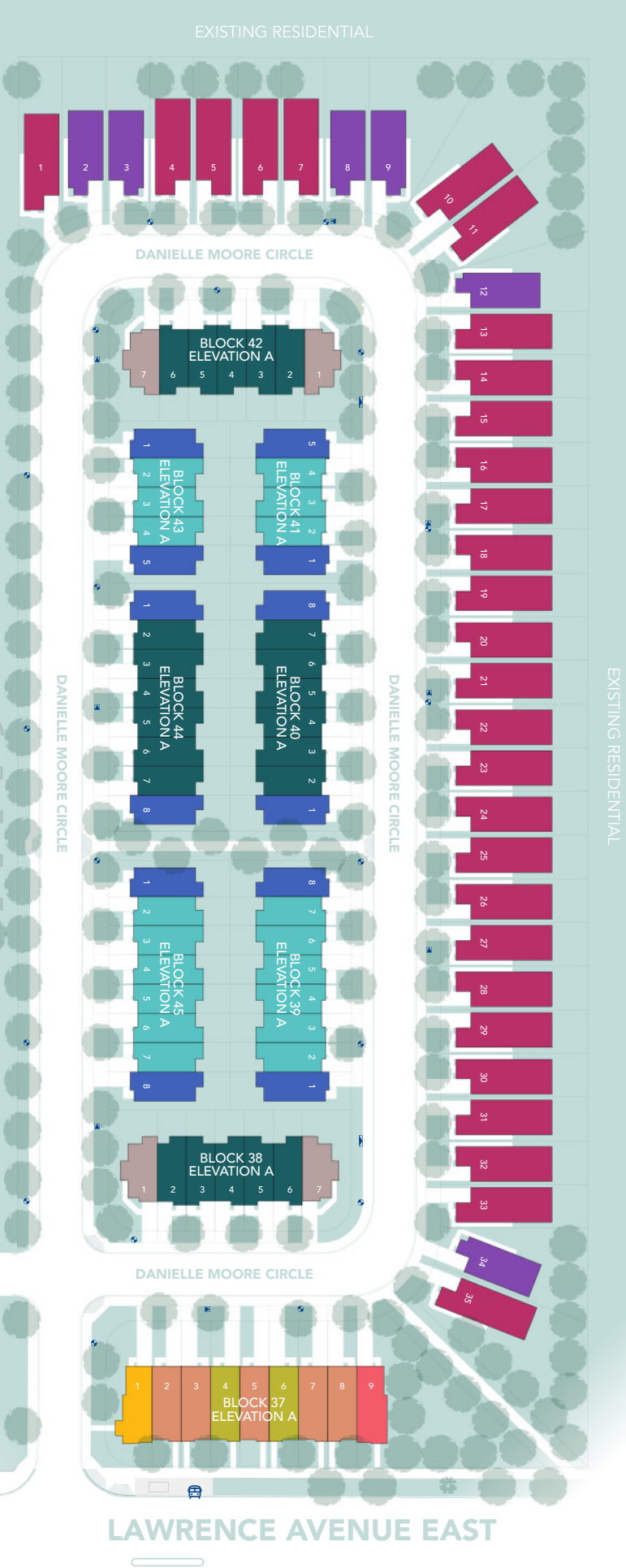
- BEAUMONT**  
1917 SQ.FT.
- BELLMONT**  
1958 SQ.FT.
- RICHMONT**  
1971 SQ.FT.
- VELMONT**  
2023 SQ.FT.

## DETACHED

- BROOK VILLA**  
2036 SQ.FT.
- GLEN VILLA**  
2413 SQ.FT.
- GLEN VILLA II**  
LOTS: 1, 4-7, 10-11, 13-21, 30-33, 35

### UTILITIES

- TRANSFORMER
- STREET LIGHT
- MAILBOX
- BUS STOP



# MILA

BY MADISON

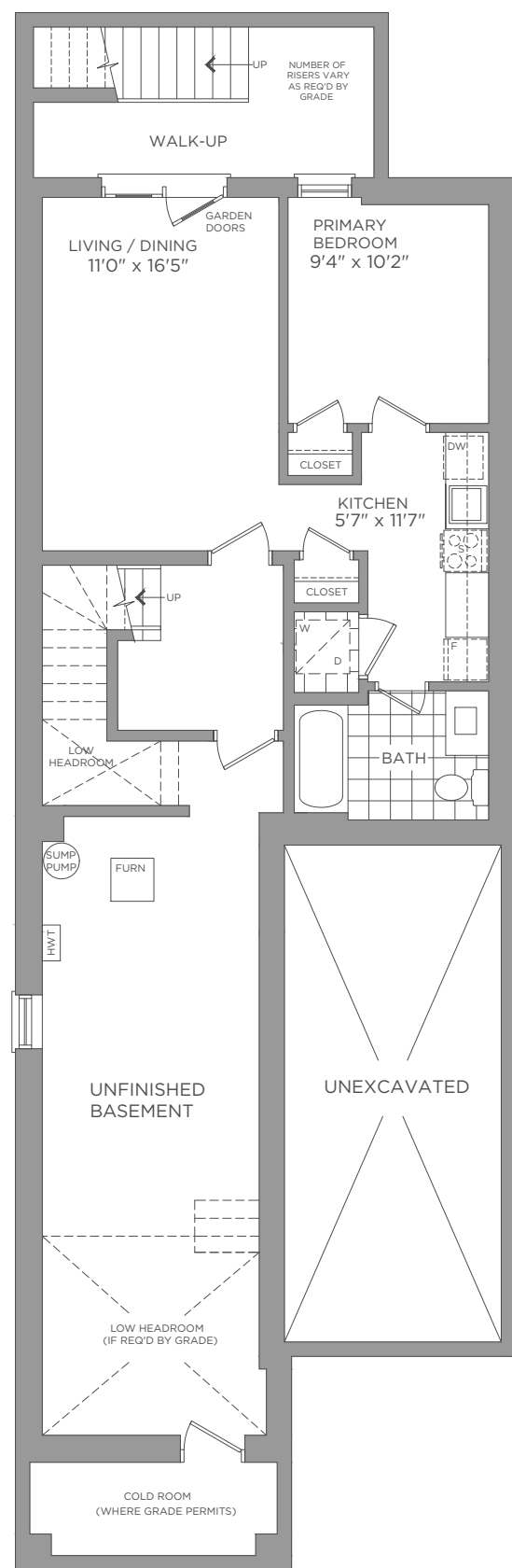


## SINGLE DETACHED GLEN VILLA II

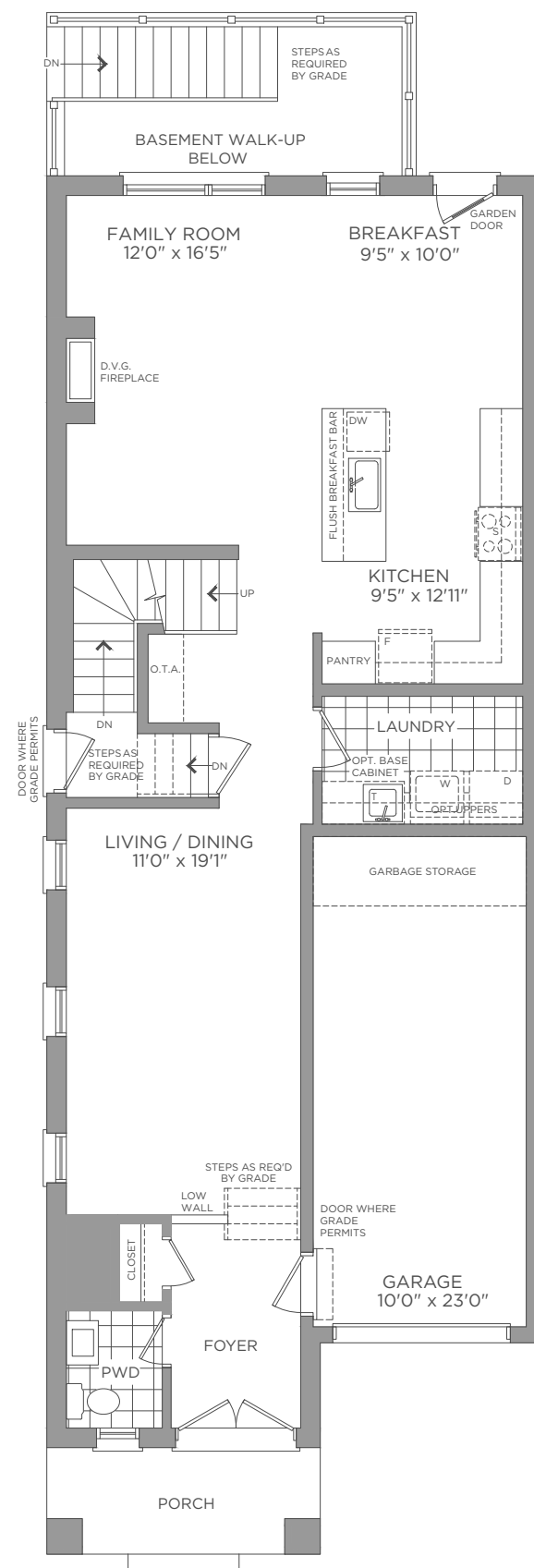
2,413 SQ.FT.  
+ 545 SQ.FT. LEGAL ACCESSORY SUITE

4+1 3+1 1 1

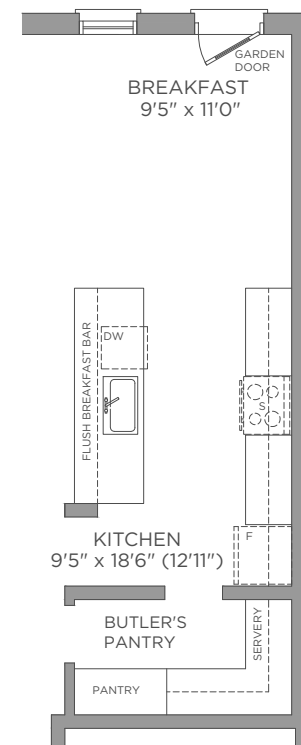
Site plan is not to scale and is artist's concept only. Site plan is subject to approval by applicable authorities and the purchaser agrees to accept any changes. Dimensions, sizes, road patterns, park and landscaping are proposed and approximate and may vary from finished community. All details are subject to change without notice. E. & O.E., March 2023



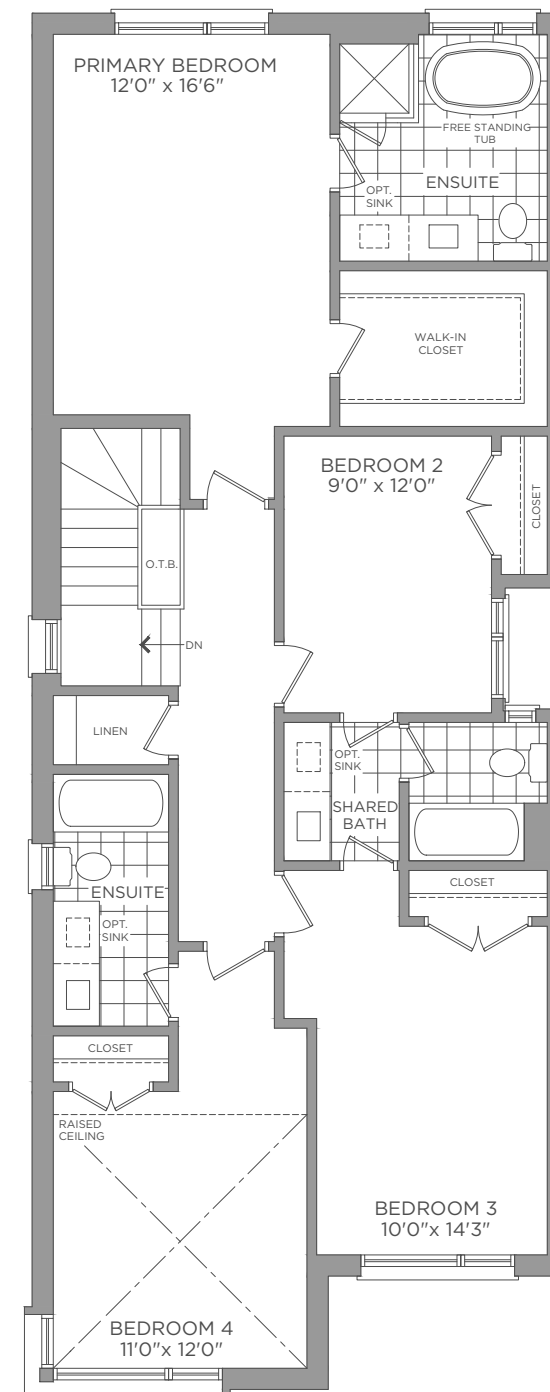
BASEMENT  
ELEVATION A, B, C & D



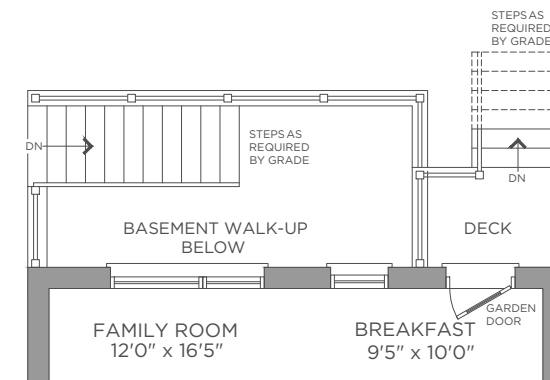
FIRST FLOOR  
ELEVATION A, B, C & D



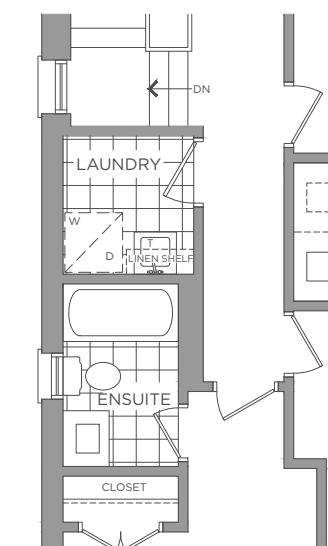
OPT. FIRST FLOOR  
IF LAUNDRY ON 2<sup>ND</sup> FLOOR



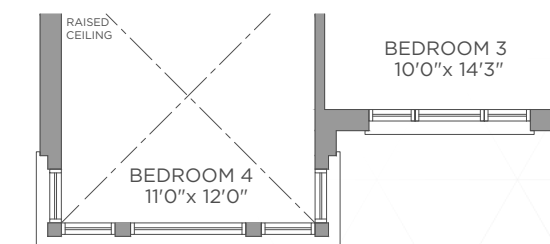
SECOND FLOOR  
ELEVATION A, B & D



FIRST FLOOR WITH DECK  
IF REQUIRED BY GRADE



OPT. SECOND FLOOR  
WITH LAUNDRY



SECOND FLOOR  
ELEVATION C

**MADISON**  
GROUP

Dimensions, materials, specifications, structural elements and floorplans are subject to change without notice. Actual usable floor space may vary from the stated floor area. Layout shown may be the reverse of the unit purchased. Exterior elevation and site plan are subject to approval by applicable authorities and the purchaser agrees to accept any change. The size and location of window, mullions, exterior doors, furnaces, HVAC Units, patios and/or balconies are subject to change and may vary depending on unit location within the project. All illustrations are artist's concept only. E. & O. E., March 2023

SINGLE DETACHED  
**GLEN VILLA II**

2,413 SQ.FT. + 545 SQ.FT. LEGAL ACCESSORY SUITE